

IMAGES OF YALLOURN

THE YALLOURN MIGRANT HOSTEL



This photograph was simply labelled: Yallourn Migrant Hostel

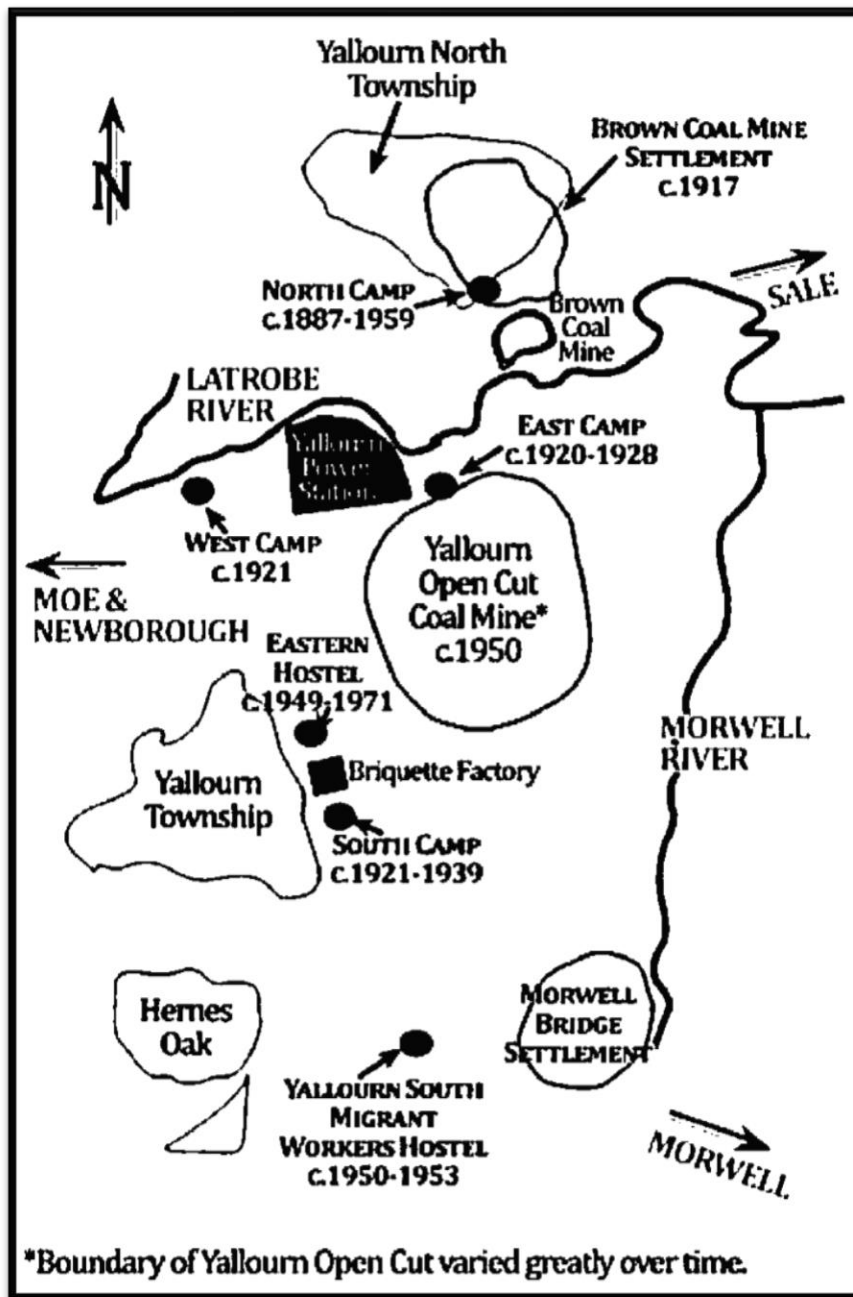
Source: Museum of Victoria: Item MM-11479

FURTHER INFORMATION ABOUT THE CAMPS & HOSTELS AT YALLOURN

When reading about the history of Yallourn ,information related to the various workers' camps and hostels can be confusing. The list and the map (below) attempt to clarify where (and when) the camps were established for workers in the Yallourn area.

In the period 1887-1971, there were camps for workers at the Brown Coal Mine, Yallourn and near Hernes Oak.

- North Camp: 1887-1959
- East Camp : 1920-1928
- West Camp: 1921
- South Camp: 1921-1939
- Eastern Hostel: 1949-1971
- Yallourn South Migrant Workers Hostel: 1950-53
- Married Quarters. (Down towards the Latrobe River)



The map of the camps at Yallourn was originally published in Joseph Sestokas' book entitled 'Welcome to Little Europe. Displaced Persons and the North Camp' - Little Chicken Publishing - 2010.

The camps are an intriguing part of the history of Yallourn as they provided rudimentary living quarters and some sense of community for thousands of workers (many of whom had come from far-flung corners of the world seeking a new life in Australia).

As can be imagined, life in the camps during the depths of winter and the height of summer would have been taxing. The nature of the work, in the early years of the Yallourn Project, was onerous; and the Spartan accommodation and conditions, provided for the men, were also a test of fortitude.

A PHOTOGRAPHIC STUDY OF THE EARLY CAMPS AT YALLOURN

The following photographs try to give some understanding of the various camps in and around Yallourn throughout the years. The photos are taken from various sources such as the State Library of Victoria, newspapers of the times, Prue McGoldrick's history of Yallourn entitled 'Yallourn Was' and the Museum of Victoria collection.



East Camp Portables- September 1921

Source: 'VirtualYallourn' website.

Note: It is difficult to verify, but these huts may have been formerly used by workers employed in the construction of railways throughout Victoria. It is also known that cubicles, from the Langwarrin Military Camp, were transported to Yallourn to provide accommodation for the workers in 1921.



West Camp at Yallourn- 1922.



Eastern Camp when the temporary power plant was under construction.



The West Camp in 1925.

This photo was part of a montage regarding various aspects of Yallourn.

Source: 'The Australasian' Saturday 9th May 1925. Page: 64



Temporary housing at Yallourn - 1920-30.

Source: Museum of Victoria Collection-MM9674



This photograph is thought to be of the Western Camp but it is difficult to verify.

Source: Stampboards .com



**West Camp area.
The power station can be seen in the background
Source: H2009 18/280**



**The Power Station and the West Camp (i.e. the line of tents in the foreground).
Source: State Library of Victoria: H2009 18/623**



**1920's... Water storage tanks are being transported to West Camp
by horse and cart.**

Source: State Library of Victoria: H2009 18/285



The water tower and tanks for the West Camp.

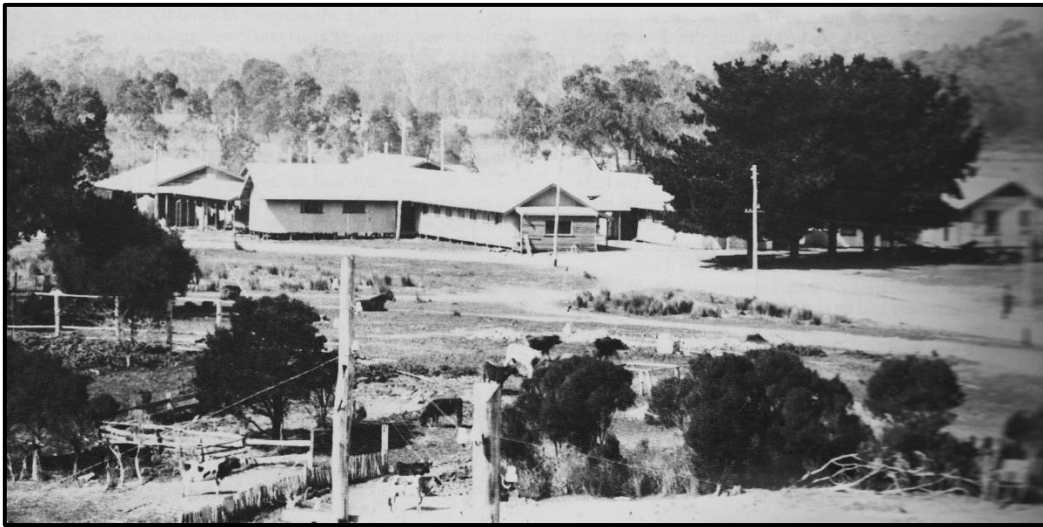
Source: State Library of Victoria: H2009.18/282



Yallourn- West Camp: Staff Mess (1920-30)
Source: State Library of Victoria- H2009 18/281



This image is a section of a larger photograph of the Western Camp.
Source: 'Yallourn Was' Page: 38



The Eastern Camp Store.
Source: 'Virtual Yallourn' website



A photograph of the early settlement at the Brown Coal Mine (Yallourn North).
Source: The original source of this photo is not known.



This photo was labelled: 'Camp Building'.
The original source is unknown but was published in 'Yallourn Was' on page: 20.



West Camp- Building of cubicles

Source: State Library of Victoria: H2009.18/284



**West Camp Yallourn (date unknown).
Source: Morwell Historical Society**



A section of the Married Quarters can be seen in the foreground of the photograph.

Source: 'VirtualYallourn' website.



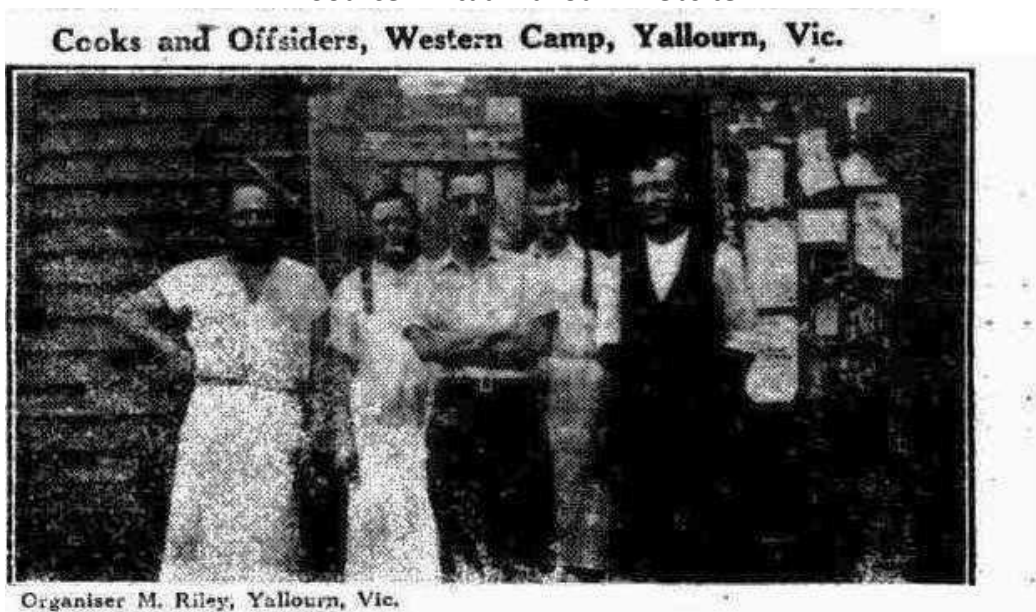
Employees of the State Electricity Commissioners are seen at the wash-tubs in the main construction camp at Yallourn. Eventually, perhaps, cheap electricity will dispense with manual labour in the laundry, but

This photo shows men at the laundry at the main construction camp at Yallourn in 1923.

Source: 'The Argus' Monday 27th August 1923 PAGE :7



1925- East Camp- Savage Homestead in the trees and historic pines.
Source: Virtual Yallourn website.



Source: Source: NLA 145975342- 'The Australian Worker' 21st May 1930 Page: 11



Yallourn amenities-an exterior view of the huts.
Source: Museum Of Victoria Collection: MM11367 -1947



**Sketch of the SEC's Eastern Road Hostel for Single Men in 1947.
The original source of the sketch is not known.**



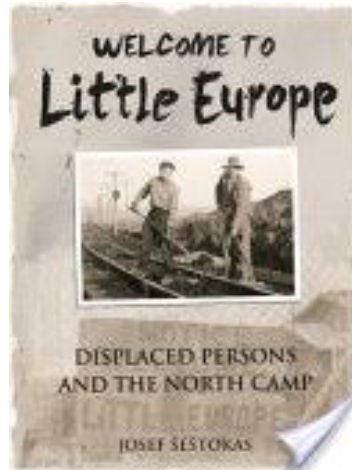
Joe Schembri and in the background a view of the West Camp at Yallourn in 1950.

WOULD YOU LIKE TO KNOW MORE ABOUT THE CAMPS?

John Sestokas' book entitled 'Welcome to Little Europe' is recommended reading for anyone wishing to fully understand the trials and tribulations of the workers, who lived in the camps in Yallourn and Yallourn North, in those early years of settlement.

Patrick Morgan praised the book in his review in December 2011..

" One of the virtues of this book is that the author has not just concentrated on life in the camp itself, but has explored wider issues in Australia's changing immigration policy. This helps explain the problems the displaced persons faced...This is a very impressive book, as it brings to life local events by interpreting them in a wider perspective. It adds a lot to our knowledge of Latrobe Valley, Gippsland and immigration history." Source: 'Catholic Life'



A newspaper report regarding how a brave young Mother rescued her baby from a house fire at the West camp in 1928 can be found on this website at:

<http://www.virtualyallourn.com/node/30422>

An article regarding the Christmas celebrations at the Brown Coal Mine Camp in 1921 can be found on this website at:

<http://www.virtualyallourn.com/node/28239>

An article about an historic meeting at the West Camp in 1923 regarding the need for a resident medical practitioner for Yallourn can be found at this website:

<http://www.virtualyallourn.com/node/30396>

A story about a health crisis at the Brown Coal Mine Settlement in 1928 can be found on this website at:

<http://www.virtualyallourn.com/node/32326>

CAN YOU ASSIST THIS VIRTUAL YALLOURN HISTORY PROJECT?

The above series of photographs are part of an on-going history project which is being undertaken by Julie George and Roger Spaul for the Virtual Yallourn website. All readers are warmly encouraged to forward any photos or anecdotes about the camps and hostels to Julie for posting on this website.

Virtual Yallourn would welcome any further information and clarification regarding the above photographs. Thank you Julie.

