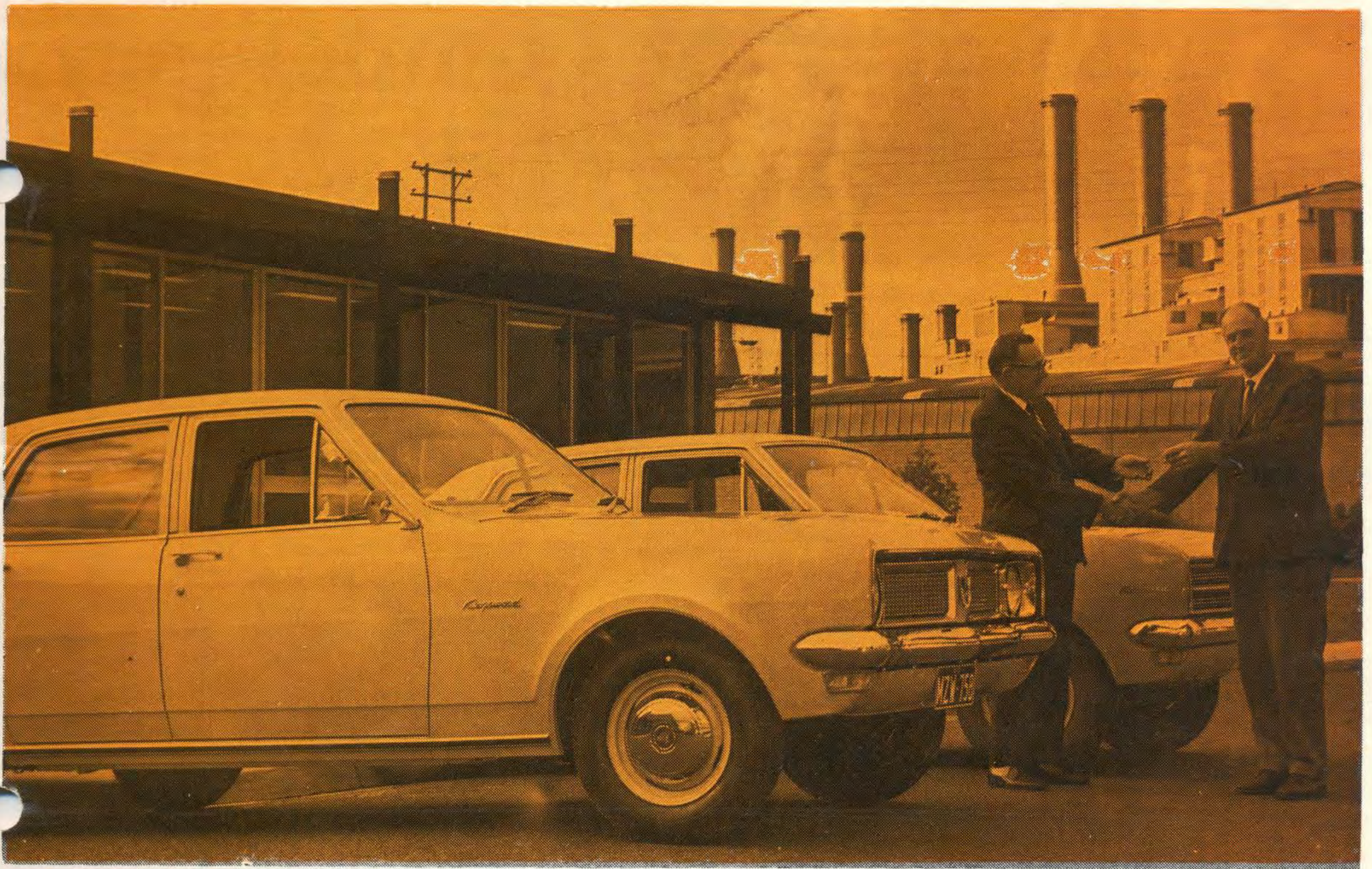


*Boone*

# contact

THE STATE ELECTRICITY COMMISSION LATROBE VALLEY REGION MAGAZINE

MAY, 1971



## COMMISSION BUYS VEHICLES LOCALLY

Everyone in the Latrobe Valley is aware of the fact that the Commission, as the largest employer in the area, is a major influence on the economic well-being of the community.

The amount of wages paid to Commission employees is, of course, a direct injection of money into the economy and has the most immediate effect.

However, the Commission's contribution to making the wheels of local commerce run smoothly does not end there.

Over the years it has been the policy of the S.E.C., Latrobe Valley Region, to purchase its requirements locally, wherever possible. With the growing sophistication of local industry an ever-increasing proportion of the

Commission's day-to-day needs has been satisfied by local firms.

As you can appreciate, an organisation the size of the Commission requires large quantities of a great variety of commodities to keep it going. Take food, for example. To keep its canteens and Hostels going, we spend getting on for \$70,000 each year on food—all purchased locally.

On items such as timber and timber products, we spend over \$36,000 a year. On automotive parts, tyres and batteries the total is over \$90,000.

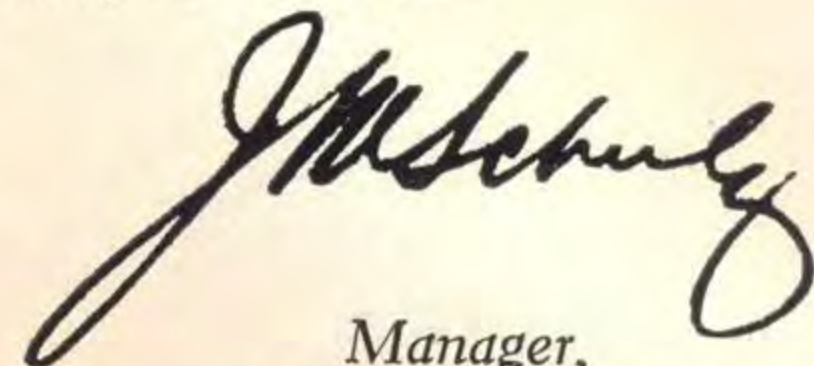
This year, for the first time ever, the Commission is purchasing its sedans, station wagons, utilities and panel vans locally. Between them, Foster Motors of Yallourn and Kelly

Bros. Motors of Morwell, successfully tendered for the supply of 63 vehicles.

The photograph on the front page shows Jack Unwin, Senior Transport Maintenance Officer-Plant, taking delivery of the first sedan to be delivered.

At present, the Commission is spending at the rate of almost \$1 million

a year on purchases throughout the Latrobe Valley. Indications are that this level of spending will at the very least be maintained and in all probability will increase.



Manager,  
Latrobe Valley Region

---

# Certificates of Competency Presented

For the past ten years the Commission has run training courses leading to the granting of Certificates of Competency for electrical testers and operators.

The course for Trainee Electrical Operators takes three years and for Trainee Engineering Assistants, four years. Both courses consist of formal schooling at Yallourn Technical College and on-the-job training.

Once they have been awarded their Certificates of Competency, the operators are reclassified as Assistant Electrical Operators and assigned to the control rooms of the various power stations, whilst the testers are reclassified as Engineering Assistants, Grade 1, and posted to the Test Laboratories.

On Friday, April 2, the Regional Transmission Engineer, Mr. George Bates, presented Certificates of Competency to the latest batch of trainees to qualify.



Front Row (left to right): Henry Hendriks (Electrical Operator), Paul Macklan (E.O.), Mr. George Bates (Regional Transmission Engineer), John Hewling (E.O.), Les Canchi (E.O.).

Back Row: Lex Derham, who accepted the E.O. Certificate on behalf of his son, Ian, Erik Skalerskog (Engineering Assistant), Bill Fletcher (E.A.), Wayne Casey (E.O.).

Not shown are Engineering Assistants, Ian Little and Robert Waddell, who are both at school full-time.

# VALLEY TAKES DELIVERY OF NEW HYDRAULIC TRUCK CRANE

On Thursday, April 22, the Region took delivery of a new, fully hydraulic truck crane.

The crane is rated at 60,000 lb. and can lift one ton with the telescopic boom fully extended to 80 feet. It should prove of great value where weights of, say, six or seven tons need to be lifted from a distance of around 40 or 50 feet.

The six-cylinder diesel engine develops 190 horsepower and powers all component units of the crane. The hydraulic boom is in three sections and extends from 32 feet to 80 feet. In all, there are five separate circuits in the hydraulic system, each with its own separate pump.

Overall length of the unit with the boom retracted is just over 38 feet and the overall width is eight feet. With the outriggers in position the overall width is almost 17½ feet.

The height overall is under ten feet and this factor contributes to the low centre of gravity which in turn gives greater capacity at long radii.

There is a combination hand lever and foot pedal control which makes for easier operation of the boom hoist and boom telescope.

*Right: Dinny Cameron tries out the controls of the new P & H hydraulic truck crane.*





# HALF-PRICE ELECTRICITY CUTS COSTS

Inflation is a very hot topic at the moment. And how to keep living costs in check bothers everyone.

One authority concerned with providing warmth and keeping costs down also is our State Electricity Commission.

It's doing excellent work about both by introducing to the Victorian public the world's very latest space heating methods known as Heat Banks and Midi Banks. These provide warmth stored up at night and every afternoon using half-price electricity.

When you buy one of these marvellous new electric storage heaters your outlay is lowered because all the necessary wiring is done for nothing in single houses. If you happen to live in a flat the installation is subsidised to the extent of \$15 per kW (limit 15 kW). For commercial premises the Commission offers the same installation subsidy, without limit.

Heat Banks store heat from electric elements in the insulated core of an attractive console unit which adds to the beauty of any home or flat. Running costs are remarkably low because they store their heat during the night when electricity is only half-price. There is also a three-hour afternoon period. Heat Banks operate automatically by means of a room thermostat. So there's absolutely no waste of heat—you make the most effective and economical use of all you pay for.

Running costs are remarkably low. Heating costs, if you have an off-peak hot water service are—

| Capacity | Average Cost per Week |
|----------|-----------------------|
| 2 kW     | \$0.65                |
| 3 kW     | \$1.00                |
| 4.5 kW   | \$1.50                |
| 6 kW     | \$2.00                |

(Approximately 20 cents extra without an electric hot water service)

All this is not to mention another benefit. Maintenance costs are minimal because, like your electric hot water service, there is little that can go wrong. No regular service is needed.

Another economy point in favour of Heat Banks is that the electricity they use is recorded separately on off-peak meters. This means that you can budget for your heating, as you know exactly the maximum that it can cost.

If you've already got an electric off-peak hot water service installed, you save more because the rate drops from half-price (1.05 cents a unit) to even less (0.85 cents a unit) after the first 1,200 units each quarter, which is the average hot water usage.

If you deduct last year's water heating bill for the same quarter from this year's total, you can see how little your electric space heating costs.

Heat Banks come in various sizes to suit your needs. They give you automatic, thermostatically-controlled heat when and where you want it. With larger central heating units it's easy to duct heat into other rooms.

The new low-cost Midi Bank (from only \$80) is designed to be installed in those areas in the house which are usually left out in the cold—spots like kitchens, bedrooms, halls and passage-ways. The Midi Bank ideally complements your primary heat source, whatever it may be. With its installation you can enjoy the comforts of a central heating system at far less capital and operating cost.

Summed up, one very comforting thing in these inflationary times is the clean breakthrough to electric storage space heating.

# Morwell Workshops Area Social Club's Dinner Dance

The Morwell Workshops Area Social Club held a dinner dance at Kernot Hall, Yallourn, on Friday, April 23.

On this page we show a representative sample of the revellers. How many can you recognise?



# DUST COMES DOWN

The dust fall-out rate in Morwell and the surrounding area is now only half that measured in 1963, in spite of the fact that the energy produced in the Valley has more than doubled in the same period.

The rate of dust fall-out in the Latrobe Valley during the last two years has been at a record low level. The results continuously coming in from the wide network of measuring gauges established by the Commission throughout the Valley all confirm this downward trend.

Pollution due to sulphur dioxide has never been very high, but in 1970 the level dipped sharply and is now amongst the lowest in the world.

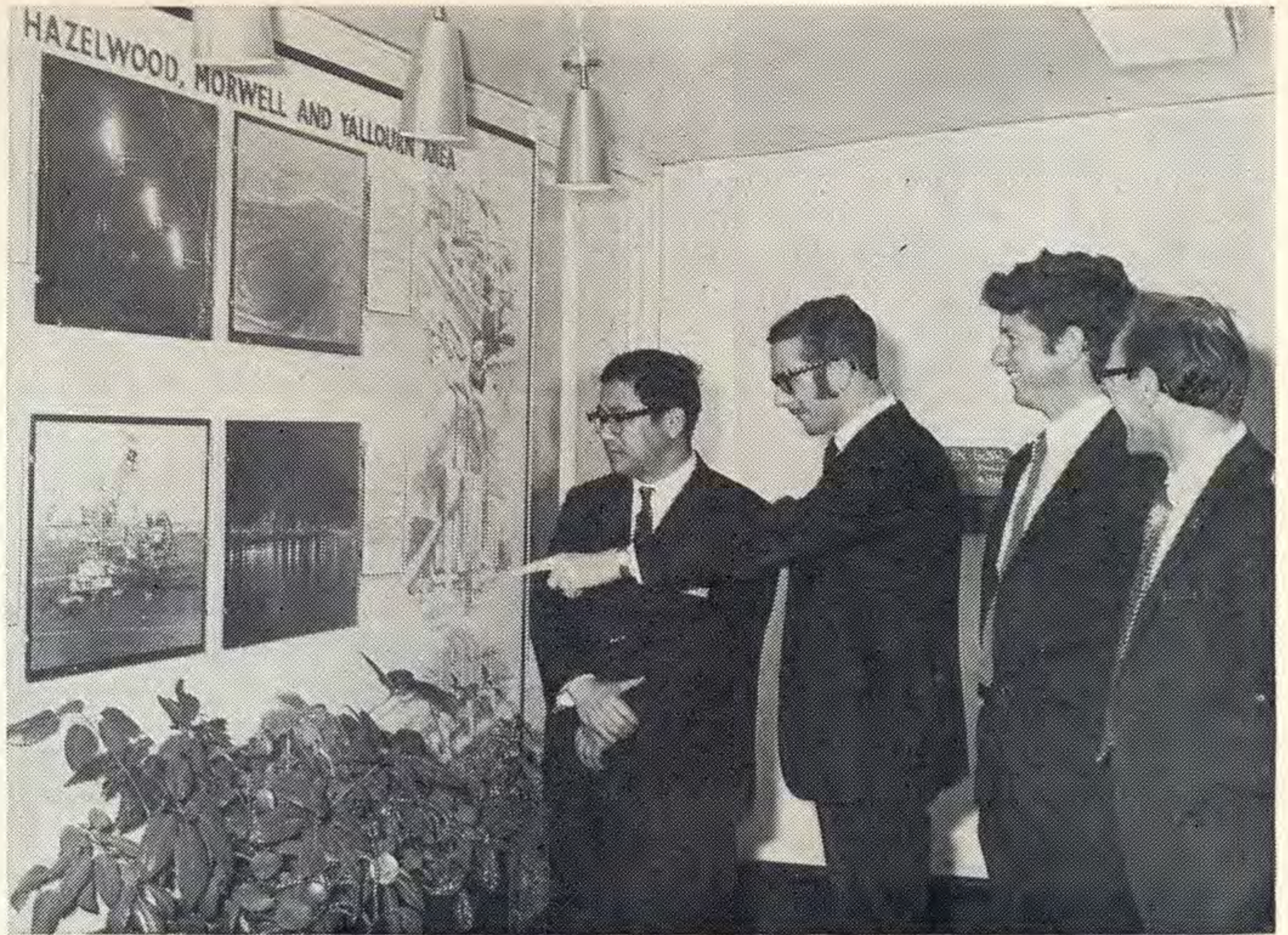
In addition to permanently installed sulphur gauges the Commission has, in the last two years, taken many readings with the latest portable equipment that analyses the sulphur dioxide content of the air.

For example, from April to October, 1970, in the commercial area of Morwell, pollution due to sulphur dioxide was less than half a part in a hundred million. This is considerably better than in rural England.

As new operating plant is brought into service, the Commission will continue to keep a close check on the effect of its operations on the local environment.

Extra dust and sulphur gauges are being installed to determine the effect, if any, of Yallourn 'W'.

Of particular interest will be the performance of the high stack at 'W'. Experience at Hazelwood has shown that high stacks tend to disperse dust fall-out, especially sulphur compounds and have been a major factor in reducing localised pollution.



## Jaycee Vice-President at Morwell

Mike Answerth of Property, Vice-President of Churchill Jaycees, points out a feature of interest to Mr. Takoshi Nahamo, Jaycee Vice-President for Australia and South Pacific; Gippsland Regional Secretary, Mike Power; and

Regional President, David Holroyd.

Mr. Nahamo visited the Commission during the two days he spent in Gippsland as part of his tour of Jaycee Chapters throughout Australia.



## Middle Management Course

Members of the Commission's Middle Management Course spent two days in the Latrobe Valley Region on April 27 and 28 as part of their training.

During their stay they toured Yallourn, Morwell and Hazelwood and were based at the Regional Training Centre.

# 1970 APPRENTICE AWARD WINNERS

Presentation of the Yallourn Technical College 1970 Apprentice Awards took place at the Trades and Technicians Courses Awards Night at Kernot Hall on Wednesday, April 28.

An address was delivered by Mr. A. D. Pead, President of the Apprenticeship Commission of Victoria, who also presented the Scholastic Awards. Higher Technician Awards were presented by Mr. Jack Robertson, Regional Power Engineer.

Commission apprentices won the majority of Awards and in the categories of Electrical Fitting and Electrical Mechanics they scooped the pool.

Listed below are the different trades and Award winners—

## BOILERMAKING, STEEL CONSTRUCTION

1st Year, Kenneth Forbes; 2nd Year, Ross Herbert; 4th Year, Anthony Dawson.

## ELECTRICAL FITTING

1st Year, Paul Davies; 2nd Year, Gary Chadwick; 3rd Year, Trevor Fox; 4th Year, David Donnison.

## ELECTRICAL MECHANICS

1st Year, Trevor Bye; 2nd Year, Kenneth Markham; 3rd Year, Norman Lyons; 4th Year, Christopher Moy.

## INSTRUMENT MAKING

2nd Year, Terry Brereton; 3rd Year, Graham Dowers; 4th Year, John Ellingham.

## PLUMBING & GASFITTING

1st Year, Peter Rowe; 3rd Year, Gary Follett; 4th Year, Kenneth Reid.

## FITTING & MACHINING

1st Year, Rodney Parker; 3rd Year, Peter Vikis; 4th Year, Ronald Leslie.

## HIGHER TECHNICIAN COURSES

1st Year Full-time Class, Anthony Di Corleto.



*Back Row (from left to right): Ross Herbert, Terry Brereton, Norman Lyons, David Donnison.*

*Second Back Row: Gary Follett, Rodney Parker, Christopher Moy, Ken Markham.*

*Second Front Row: Peter Vikis, Ken Forbes, Peter Rowe, John Ellingham, Graham Dowers.*

*Front Row: Ron Leslie, Gary Chadwick, Paul Davies, Trevor Bye.*

*Not in the photo are Trevor Fox and Anthony Dawson, also Anthony Di Corleto—Trainee Engineering Assistant (Electrical Tests).*

# Yallourn Open Cut Future Plans

by Eric Foote, Coal Production Superintendent, Yallourn



*Eric Foote*

## Overburden Excavation

It is the intention in May, 1971, to reduce the number of conveyors on the overburden face to two by removing No. 109 Conveyor, and substituting No. 108 Conveyor operating from the tail end of No. 110 Conveyor for about the same length of No. 108 Conveyor as now exists. No. 107 Conveyor will then take up the balance of the face. It will be necessary to provide a 200 h.p. tail end drive to No. 107 Conveyor. To achieve this, the present tail end drive on No. 113 Conveyor will be used in No. 7 Conveyor after the substitution of a 400 h.p. tail end drive in No. 113 Conveyor has been effected. A larger tail end drive on No. 113 Conveyor is necessary on the third level of dumping because of the dump gradient and length of conveyor.

## Overburden Dump

In the Summer period of 1971-72, we expect to have completed the filling of the second stage of the dump,



*The new perimeter road slices across the paddocks near the Yallourn Hospital.*

and will be starting on the third level of dumping. The third level of dumping will be about 60 feet above the present level and will pivot from an area approximately vertically above the present pivot area. The capacity available for disposal of overburden in the third level of dumping is about 30 million cubic yards.

## Coal

The quantity of coal required in the next year (1971-72) is about the same as required for this year, although briquetting coal will be used in Morwell Briquette Factory only because of the intended shut down of the Yallourn Briquette Factory late in 1971.

Plans are rapidly reaching finality to provide a new Bucket Wheel Dredger and its conveyor system for the supply of coal to 'W' Power Station early in 1974. Although the first

stage of 'W' Power Station is expected in service in 1972, it is not until 1974 that the capacity of the whole station will be required.

The new dredger (to be known as No. 12) will be erected outside the Open Cut perimeter on a site in the Hernes Oak area. The machine will operate on No. 1A level, which will be about 15 feet below the present 1A level and deliver coal by means of 54 inch conveyor belts running at 1,200 feet per minute to alternate loading points; one situated just south of the present Overburden Loading Point on No. 1 level and the other loading point situated about the No. 14 Loop area on No. 2 level. Train transport will be used during the excavation of the South Field until the mid 1980s.

The No. 12 Dredger will be capable



of sustaining an output of 2,000 tons/hour and will operate with a reach of up to 70ft. for top side digging and 40ft. for bottom side digging.

Access ramps have to be made from the construction site to the operating face on No. 1A level. Other auxiliary works required are the construction of conveyor ramps from the operating face to the two loading points.

Modifications are necessary to the present railway tracks and signal system before No. 12 Dredger is placed in commission.

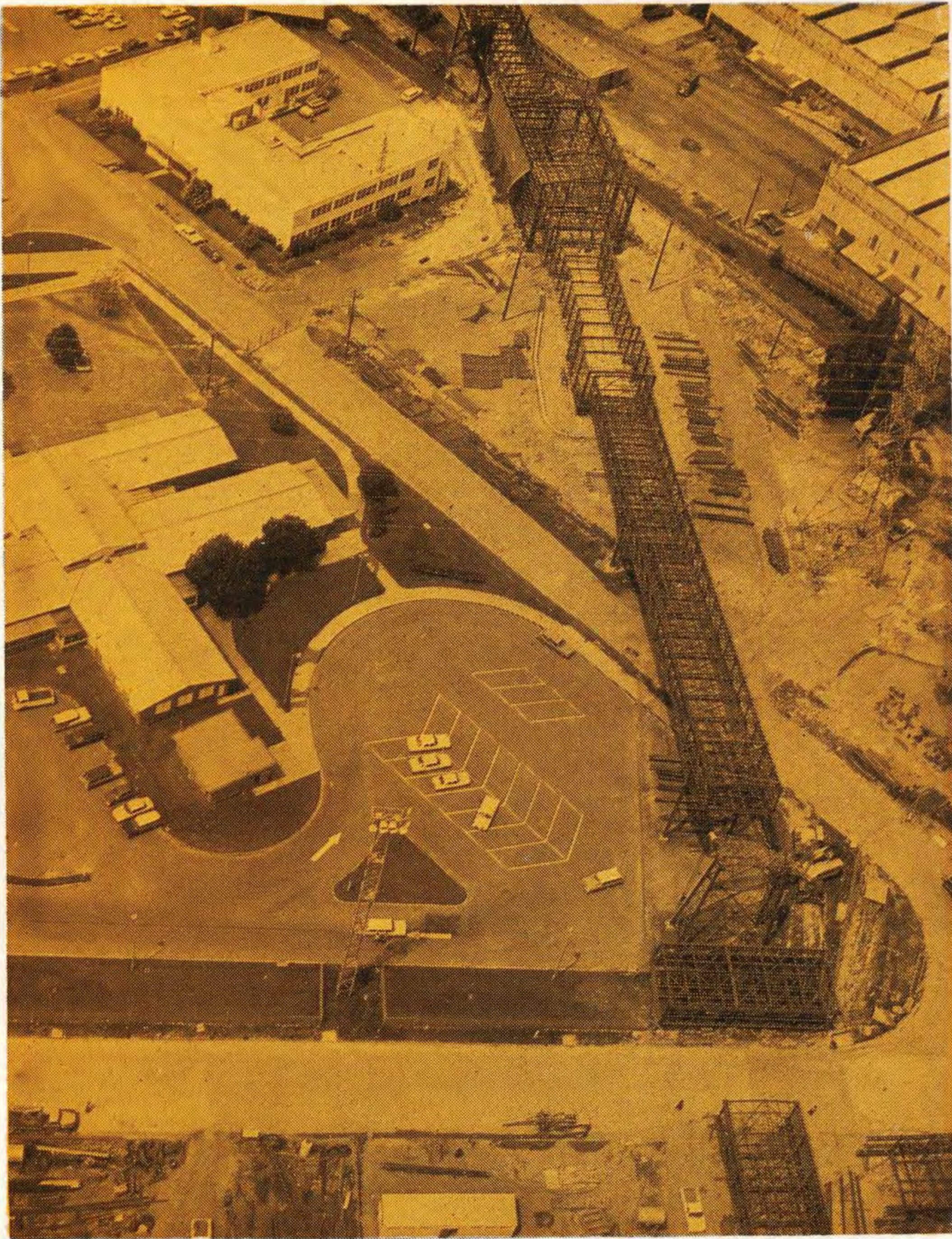
After No. 12 Dredger is placed in service, the No. 2 Dredger will be removed from the Open Cut and No. 8 Dredger substituted to take over on No. 2 level digging top side and bottom side. No. 6 Dredger will be placed on the No. 1 Cut, No. 1 level. Both No. 6 and No. 8 Dredgers will be serviced by rail transport for the coal excavated, the trains operating on double track moveable sleepers as at present.

At the present time, the conveyors to the Power Stations are being modified and our Mechanical Maintenance Section is engaged in carrying out alterations to the No. 3 and No. 4 Ditch Bunker Loaders so that they can be better utilised for supplying coal to the present Power Stations and to 'W' Power Station.

#### Auxiliary Work

Access Roads have had to be made for the future:

1. Across the overburden dump.
2. The corner of the old Princes Highway and Railway Avenue junction has been modified to prevent hindrance to overburden operations.
3. The perimeter road is being repositioned across the paddocks between Hernes Oak and the old Princes Highway near the Hospital. The Hospital site is



*The conveyor that will supply coal from Yallourn Open Cut to the new 'W' Station is rapidly nearing completion.*

expected to be evacuated with a start in the middle of this year of the occupation of the new Hospital currently under construction at the Newborough-Moe area.

4. A road will be constructed from the top of No. 4 Cut down onto No. 3 level and meeting the swing end below the Swing End Dredger access ramps. This will be completed when No. 4 Cut passes the swing end connection proposed.

#### Yallourn North Extension Open Cut

During the 1971-72 Summer, a programme of Overburden Removal of

about 1.2 million cubic yards is required to free coal for subsequent excavation.

The quantity of coal being won is expected to continue at about the same rate for future years, i.e., 400,000 tons per year. Although, experimental work with briquettes and/or natural gas at A.P.M., Maryvale may have some effect on demand.

A start has been made to improve the amenities available at this Open Cut by the transfer of a building which will provide Offices, Change-room and Canteen. This should be completed in the next few months.

# FOUR NEW QUEEN'S GUIDES

On Tuesday, March 30, the 1st Newborough Guide Company had a presentation night for four of their Guides who have gained their Queen's Guides Awards.

The girls are (from left to right in the photograph): Jillian Lowe, 15, whose father used to work with the Commission as a clerk eight years ago; Margaret Falls, 15, whose father is a foreman at 'D' Station, Yallourn; Kaye McWilliam, 15, whose dad is a foreman at E.S.B., Yallourn; Judith Seath, 16, whose father works as a Plant Controller at 'E' Station, Yallourn.

A talk on World Guiding by the Divisional Commissioner, Mrs. Boyes, was followed by a parade of girls dressed in the national guide uniform of 11 different countries.

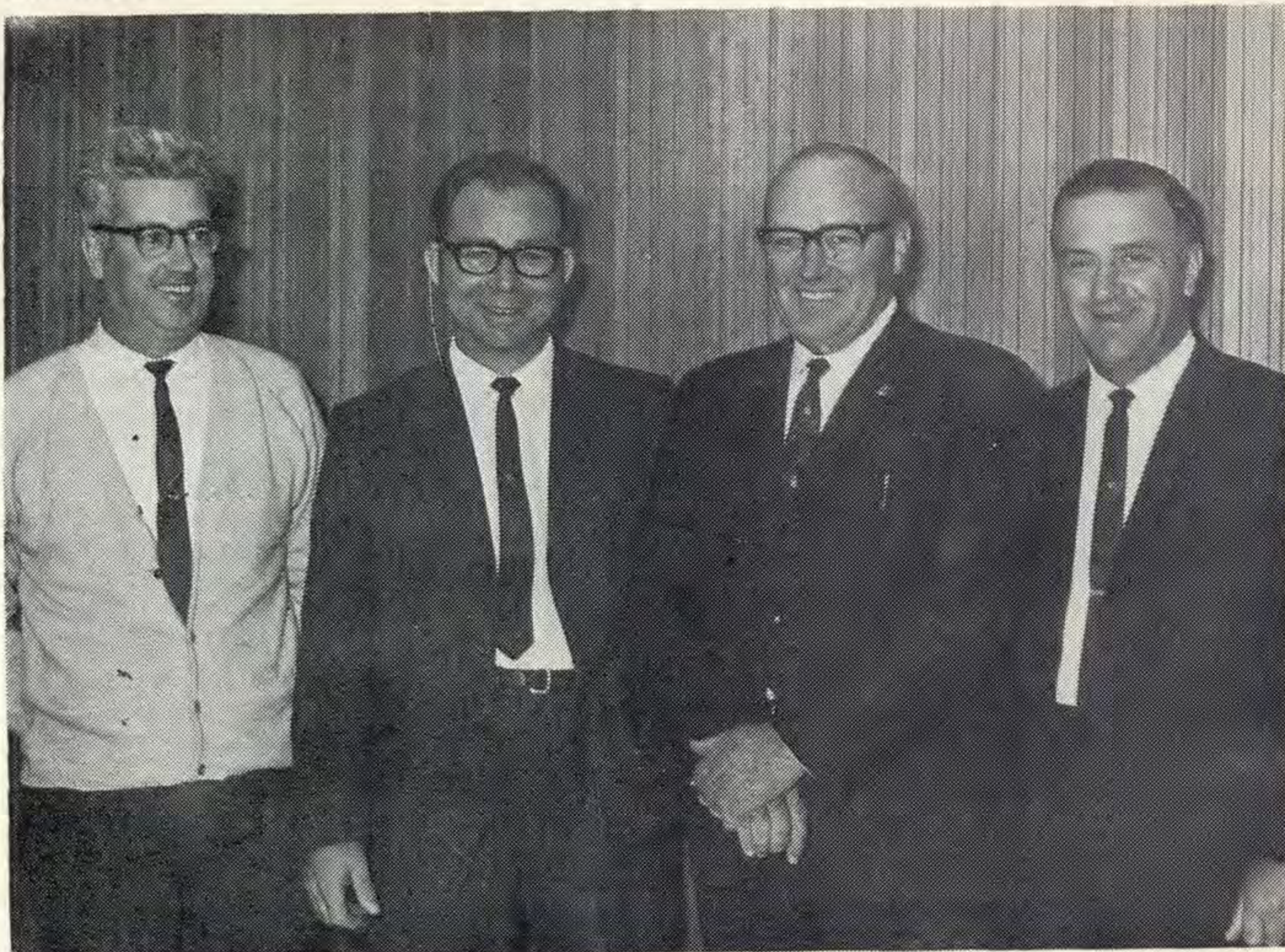
Until now there have been only three Queen's Guides awards in 17 years of guiding at Newborough. The two guides who gained their badges last year, Lorraine Love, ex 1st Newborough Company, and Louise Elliott, ex 2nd Newborough Company, both attended.



## Staff Social Club Officers

At the recent Annual General Meeting of the Staff Social Club, the above well-known Commission characters were elected. From left to right they are—ravishing Rod Doig, Secretary; lovely Les Wright, Treasurer; alluring Alan Campigli, President; and cavalier Kevin Noy, Registrar of Members.

With officers such as these, you can imagine what the troops are like!



## Calling all Social Club Secretaries

If you would like advance publicity for your social functions in 'Contact',

**PLEASE CALL ROD DOIG AT 3425**

**CENTRAL  
HEATING**  
*with*  
**BRIQUETTES**  
*saves  
your money!*



*Do you know . . .*

That briquettes offer you the lowest-cost space heating, central heating, hot water and cooking?

**ENJOY LOW-COST CENTRAL HEATING  
AND HOT WATER FROM ONE UNIT**

**DOWNJETS ARE TWO APPLIANCES IN ONE . . . A CENTRAL HEATING  
SYSTEM AND MAINS PRESSURE HOT WATER SERVICE**

*Now Available to S.E.C. Personnel on*

**★ NO DEPOSIT**

*and*

**★ UP TO FIVE YEARS TO PAY**

*from as little as \$2.00 per week*

ENQUIRE NOW AT YOUR NEAREST

**BRIQUETTE ADVISORY CENTRE**

**CENTREWAY, YALLOURN or PRINCES HIGHWAY, MORWELL**

# SAFETY SECTION

## HOW DO YOU STORE POISONS?

In the area of home accidents, Australia has no reason to be proud of herself. Her figures rate among the highest in the world, and in the category of accidental poisoning, Australia's reputation is the blackest of all.

World Health Organisation figures for the year 1959 showed that Australia's figures for accidental poisoning (in children under four years) were two and one half times greater than the next worst country, Switzerland.

**Accidental poisonings take tragic toll, particularly among the pre-school group. Statistics show that nearly 80% of these tragedies occur in the under four age group, the highest incidence is between the 18 months to 2½ years age group. The main agents being—Drugs and patent medicines, household products, e.g., insecticides and pesticides.**

**Always remember life-saving and pain-relieving drugs prescribed for adults can readily kill children. About 25% of children poisoned at home are victims of medicines, tablets, and nasal drops prescribed for adults.**

Figures recently released in the Medical Journal of Australia, show that all over Australia, accidental poisoning to small children is on the increase.

Parents reading this must be shocked and when the community is shocked there is usually an outcry—"What is being done?" The answer, providing

prevention of accidental poisoning to children, lies in the Gordon poison cabinet.

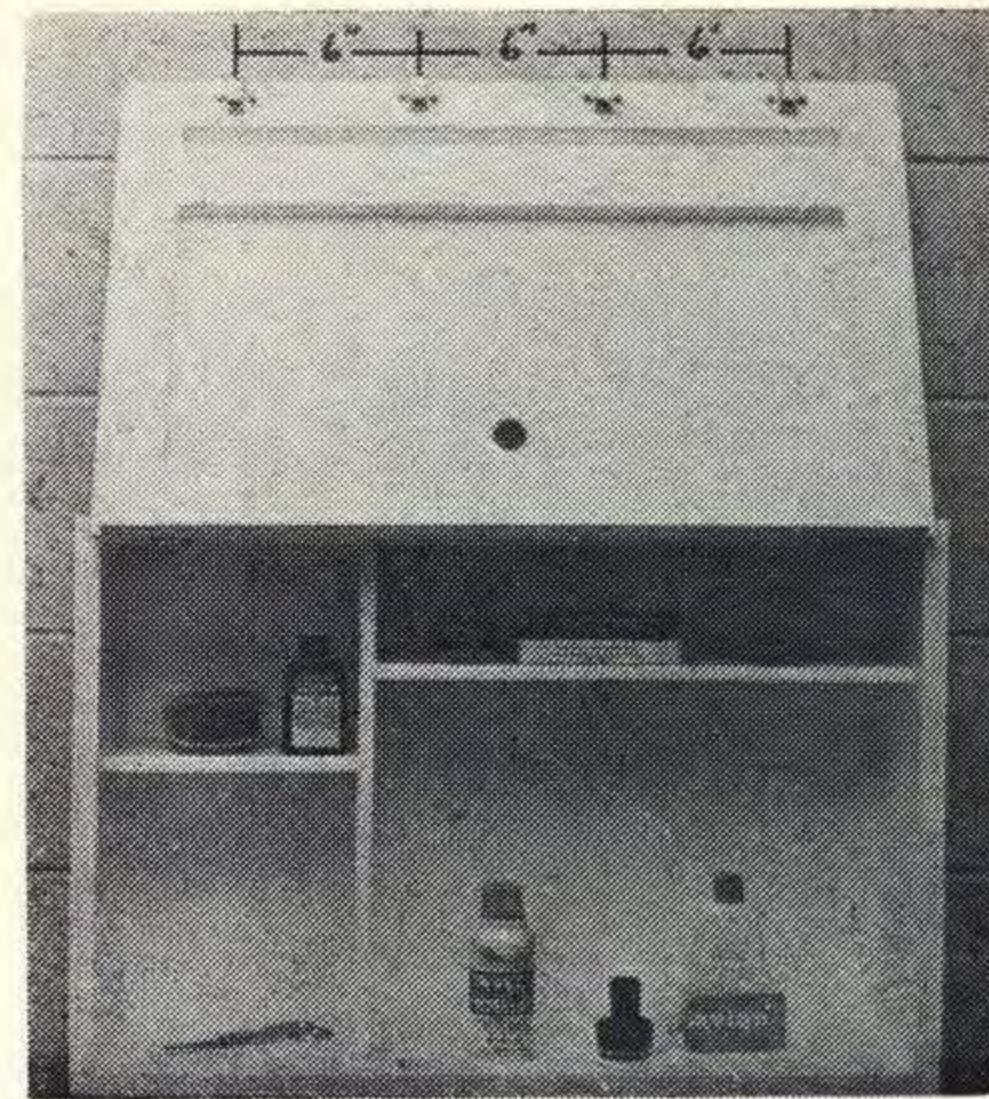
Shocked by the number of child victims in his own State, Prof. Douglas Gordon (Prof. of Social and Preventative Medicine at the Queensland University) set about designing a cabinet which would conveniently house the type of hazardous substances found in every home; would require no lock or key (which housewives may not use regularly and keys can be lost) and would be beyond the ability of a small child to operate its opening mechanism.

The illustration of the door of this cabinet, shown on the right, puts the four knobs on the door six inches apart. This was not a measurement taken at random, but was the result of study of maximum thumb-finger spans of 63 adult females. Only three adults had a span as short as seven inches, and one tiny woman had a span of 6½ inches. A distribution curve showed that it would be unlikely for an adult female to have a span below this.

Similar measurements were made on 58 children from one year to below four years. The range was 2¾ inches to 5½ inches. Twenty children between four and five years had spans ranging from 4½ to 6 inches. Only one child had a span of 6 inches.

To open the cabinet the plungers on the two left-hand knobs, and the far right-hand knob have to be depressed and held down simultaneously.

The inside right-hand knob is a



"dummy" designed to confuse a young child.

Thus two important aspects are combined. Firstly the span of 6 inches between the two left-hand knobs is wider than the span of a child in the vulnerable age group for accidental poisoning. Secondly, the double movement required to press-in and pull-out is beyond the co-ordinating ability of the young child.

Hinges placed along the top edge of the cabinet and ventilation holes at the sides ensure that the door closes automatically when dropped, unless it is released from a position only an inch or two away from the front edge of the cabinet's floor.

Shelf arrangement inside the cabinet allows for tall bottles of hazardous substances to be accommodated as well as the more conventionally sized bottles and cans.

The cabinet can be purchased from "Safety Appliance and Service Pty. Ltd.", 42 George Street, Morwell, at a cost of \$12.

However, it is also realised that even a modest cost can represent a large slice out of a basic income in a family where there may be several children in this vulnerable age group.

Therefore, these illustrations with measurements and detail, have been produced for any home handy-man who is anxious to prevent his children from becoming victims of accidental poisoning. Complete plans are available from John Guy at the Regional Training Centre, Yallourn.

It is recommended that the cabinet be affixed to a wall at a convenient height for the housewife, but away from children. If it is left on a table or low shelf, however, it should be screwed down, otherwise a child, fiddling and pulling at the knobs, could easily have another type of home accident by pulling the cabinet down upon himself.

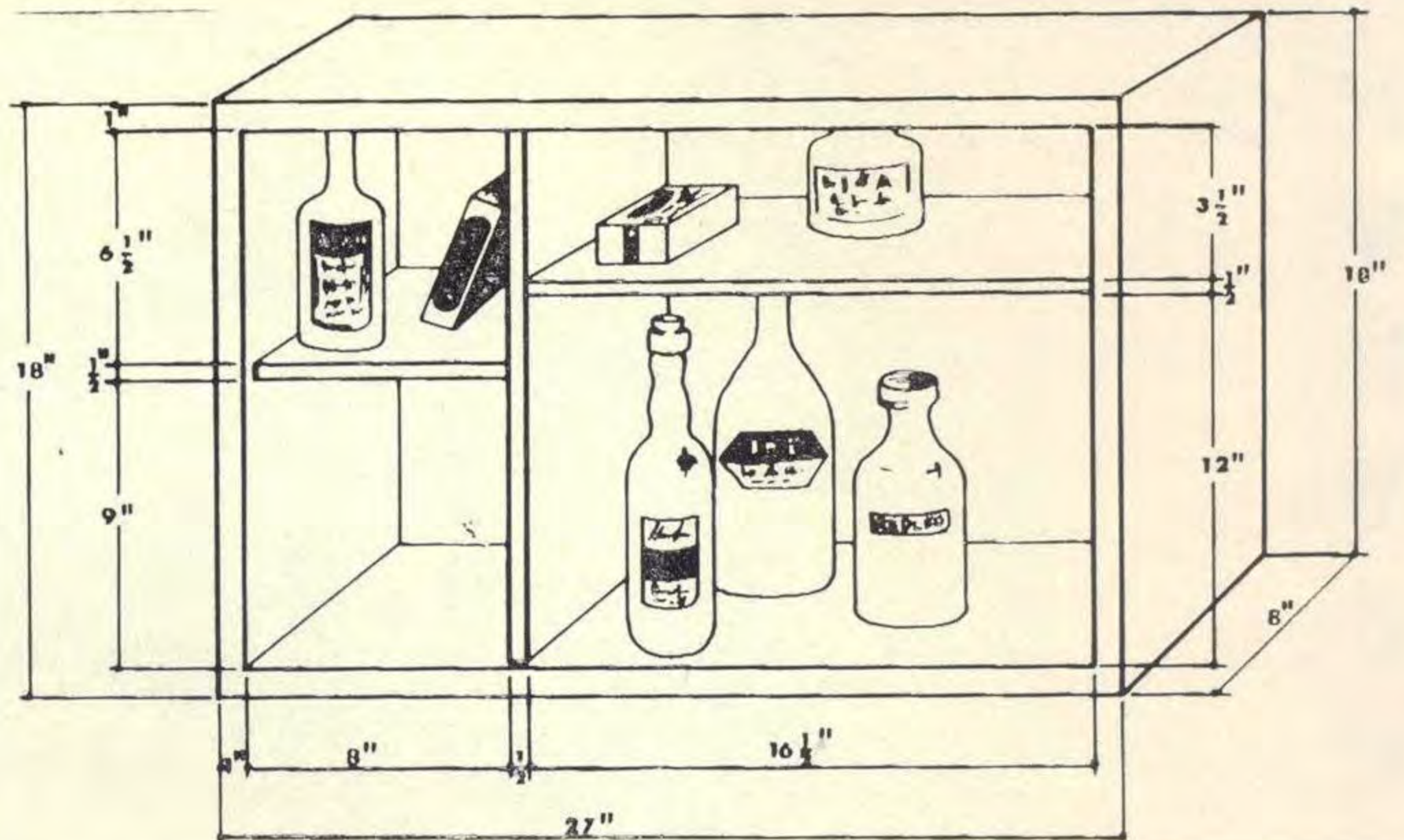
One warning note should be included. It would be possible, of course, for an older child, who has mastered the technique of opening it,



but who has not quite the finger-thumb span necessary to do so, to enlist the aid of a younger child to push on one knob while the other two knobs were operated by himself.

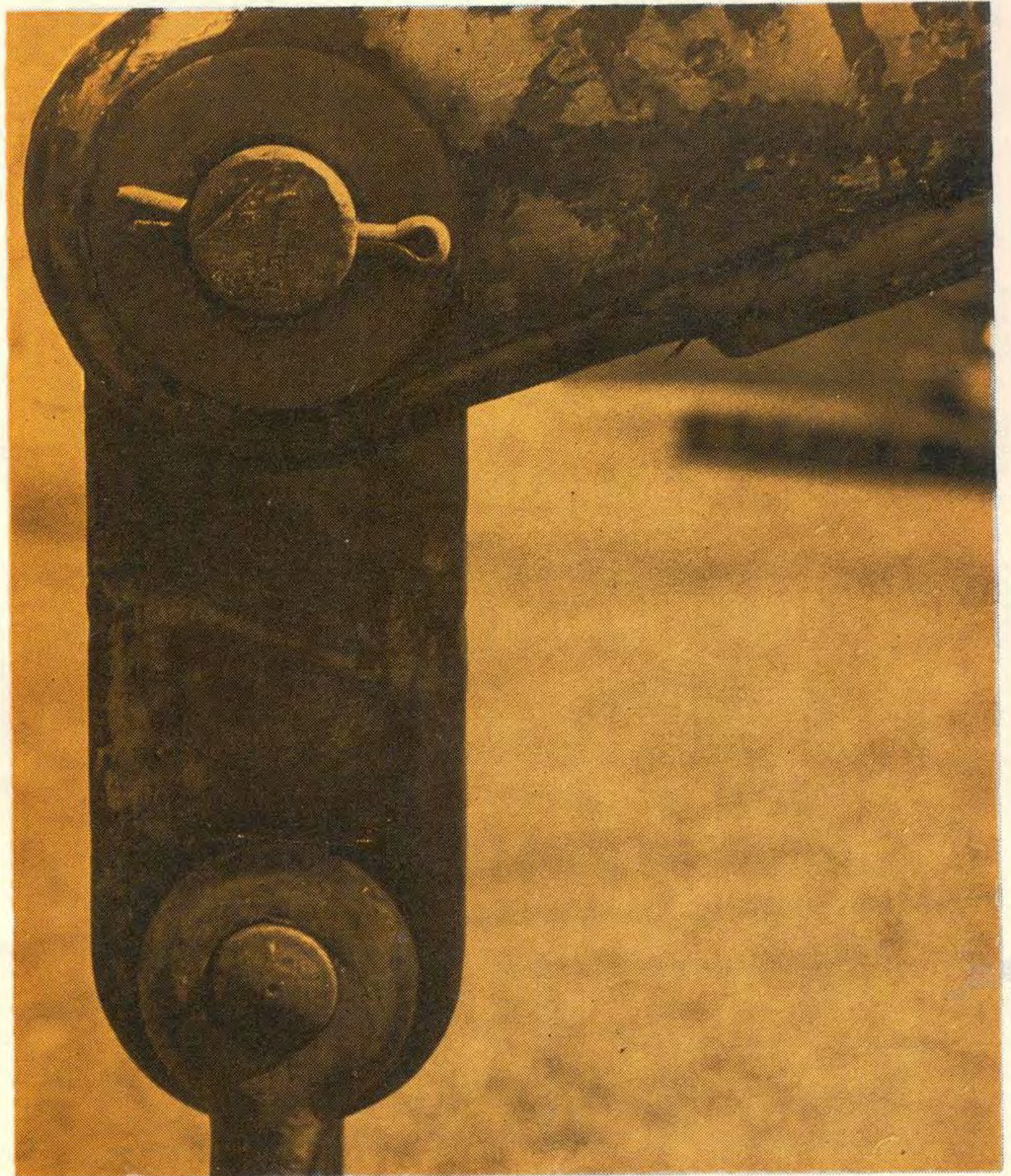
Most parents are very proud of the ingenuity and ability of their children, but even in their pride, they can and do underestimate these attributes at times.

So . . . it is a good idea to be a "jump ahead". Convince yourself that your children are capable of anything at all if they are interested enough, then take steps to prevent such ingenuity being put into practice if it is going to lead your child into disaster from a home accident.



## Safety Check List for Parents

1. Do we maintain a reasonable standard of safety in the home by removing unnecessary hazards?
2. Do we set up reasonable rules for our children to obey?
3. Do we speak in a firm calm voice when we want our children to obey?
4. Do we tell the truth—(If we say it is "hot" or it "will burn"—will it do just that?).
5. Do we ration our "no's" and allow reasonable behaviour as often as we can?
6. Are we consistent in our commands. (Do we forbid this week what we forbade last week?).
7. Do we, as husband and wife, have the same set of rules?
8. Do we train our children to have safe habits?
9. Do we supervise our children but refrain from over protecting them. Do we encourage them to be independent?
10. Do we always set a good example ourselves?



## Don't Sling Your Hook

by Col Harvey, Safety Engineer

A potentially serious incident occurred recently at the Yallourn Salvage Depot. While crossing a dished gutter in the yard an International-type mobile crane lurched, as expected, and threw its lifting link and hook assembly some twenty feet, which was not expected.

Fortunately, no-one was injured, but

this might not be the result of another such incident.

What caused the trouble was that the split pin securing the lifting pin either sheared off or dropped out. This allowed the lifting pin to move and release the lifting assembly.

Regular checking of such items is essential if incidents like this are to be avoided.

# Nice Work if You Can Get it!



Happy in his work (and who wouldn't be, surrounded by all those attractive girls) is Bob McLeod of the Regional Training Centre.

Bob is conducting a course on Basic Female Supervisory Training for poten-

tial supervisors. We understand he gets paid for it, too!

The girls are—

Back Row (left to right): Sue Te Wierik, Nancy Griffin, Jackie Smith, Anne Walker, Margaret Laszczyk,

Rhonda Kowalczyk, Anna Stoilkovic, Kaye Saultry.

Front Row (left to right): Jill Collins, Valma Wilson, Bob McLeod, Pam Armstrong, Judith Nelson.

## GOLF DAY

**Morwell Staff Social Club are conducting a golf day at the Traralgon Golf Course on Sunday, May 16, commencing at 7.30 a.m.**

The event will consist of a Stableford and anyone interested in participating can pick up an entry form from any of the following:

- R. DOIG, Admin. Building, Morwell;
- L. DERHAM, Briquette Factory Canteen, Morwell;
- J. SWAN, Transportation, Morwell;
- P. MOONEY, Central Workshops, Morwell.

Entry fee is \$1.75.

## Engagement

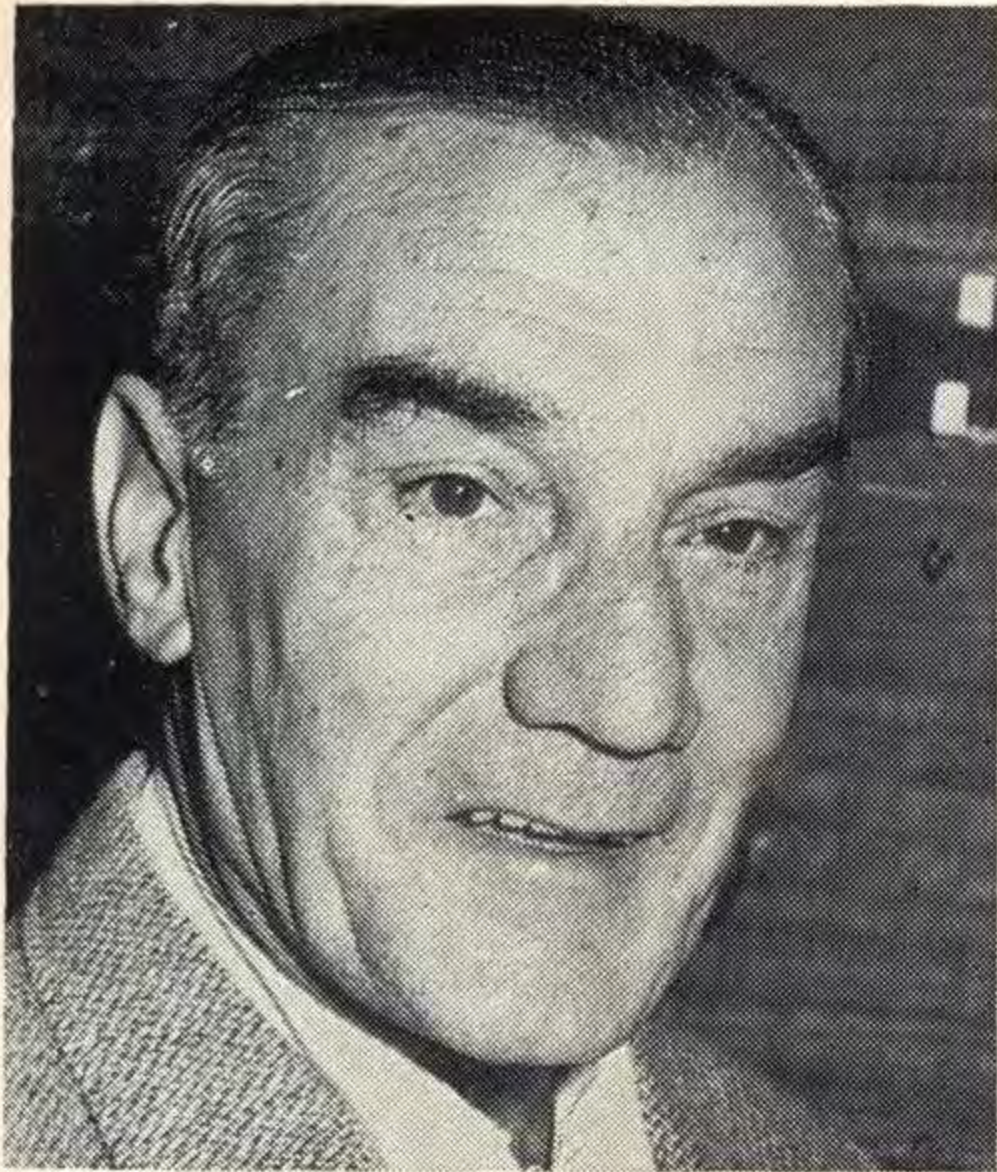
### AHERN — HOPCRAFT

The engagement was announced in Port Moresby (TPNG) on March 14 of Margaret Fay, youngest daughter of Mrs. J. J. McCormack and of Mr. W. E. Ahern of Leeton, N.S.W., to Francis William (Frank), the only son of Mr. and Mrs. W. F. Hopcraft of Newborough, Victoria.

Frank was seconded from Yallourn clerical to public service Papua in 1968. While on his first leave last year, he spent some time in Newborough and returned to Port Moresby via Mexico, Canada, Greece and Bangkok.

At present he is a Clerk, Grade 5, with the Department of Health. Margaret is a Matron in the Regular Army and works at the hospital at Port Moresby. She holds the rank of Major and during her service in the Army she served a tour of duty in Vietnam.

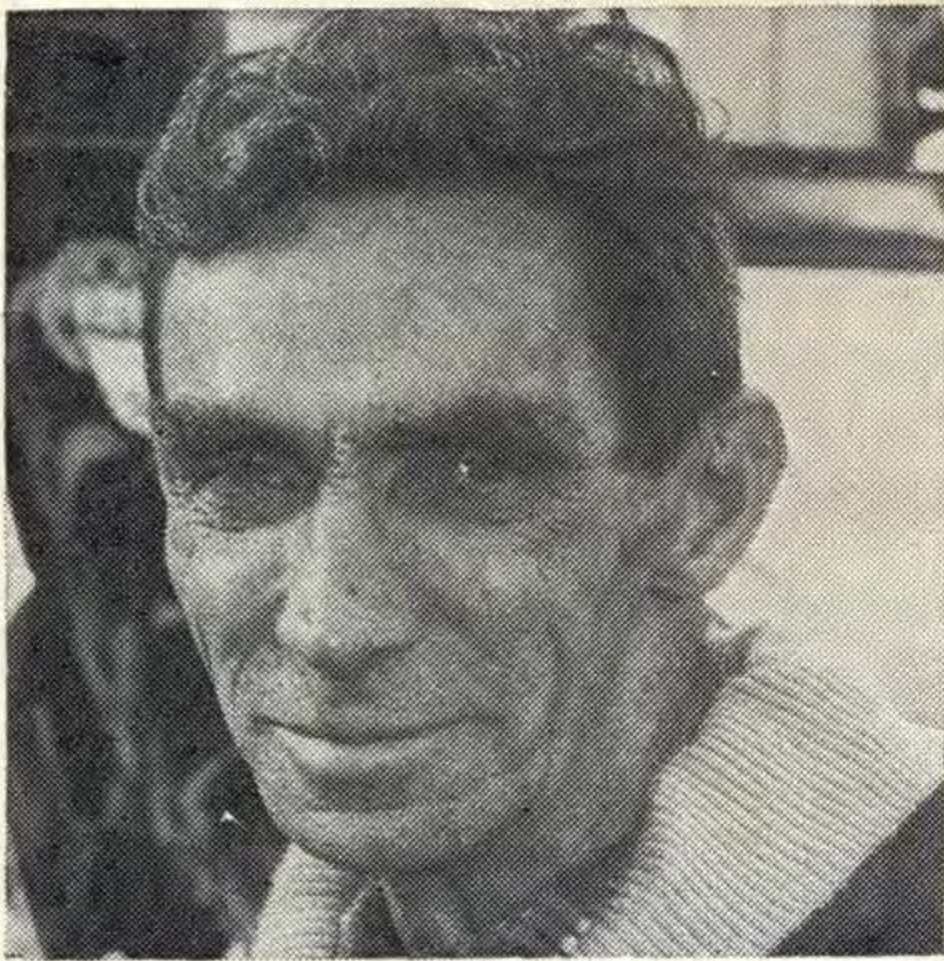
They are to be married at Leeton, N.S.W., on January 7 next year and intend to live in Newborough.



Fred Wright, a Storeman and Packer at Yallourn Power Station, retired on Friday, April 2, after nearly 20 years' service with the Commission.

Fred did not want a formal presentation, but his mates insisted on an informal get-together to wish him a happy retirement.

Frank Fletcher, Mechanical Maintenance Engineer, presented Fred with a wallet of notes, an engraved key ring and a bunch of flowers for his wife.



Jack Young, a Pumpman at Yallourn Open Cut, retired on Thursday, April 11, after 31 years' service with the Commission.

Ted Lewis, Fire Service Officer, paid tribute to Jack's service through the years and said that unlike his mates he would always stay young.

Eric Foote, Coal Production Superin-

tendent, Yallourn, echoed Ted's praise and presented Jack with an assortment of fishing gear.

Jack is a keen fisherman and intends to spend his retirement fishing and gardening. He says that with seven children at Yallourn and one in Melbourne, he will never be without some odd job to keep him busy.

## RETIREMENTS



After 35 years' service with the Commission, A. J. (Jack) Thorpe, Supervisor Grade 1 at Briquetting, Yallourn, retired on Friday, April 16.

Jack started as an electrical fitter and then became an operator before he was appointed to the staff and attained supervisory grade.

Briquette Production Superintendent, Ted Bell, said that Jack had the happy knack of making things run smoothly and, although the Commission had had a lot of miles from Jack there were still a lot of miles left for golf and bowls.

Jack was presented with a room heater, a vertical griller and cash from his workmates.



Donald Edward Gilchrist, known as "Sugar" to all his mates, retired on Wednesday, April 14, after 41 years' service with the Commission.

Sugar began his career as a grocer at Yallourn General Stores, then after ten years was transferred to the operations section of Yallourn Power Station. His last two years were spent as a Trades Assistant with Mechanical Maintenance.

Tribute to Sugar's cheery smile and unflinching good humour was paid by Frank Fletcher, Mechanical Maintenance Engineer, and Frank Tomlinson, Station Operations Engineer.

Highlight of the proceedings was a serenade to Sugar sung by a quartet led by Paddy O'Dowd, after which the Regional Power Engineer, Mr. Jack Robertson, presented Sugar with a cheque, a barometer and clock and a boxed teaset for Mrs. Gilchrist.

Printed by The L.V. Printers, 57a Seymour Street, Traralgon, for the State Electricity Commission, Latrobe Valley Region.

## SUGGESTION AWARDS, 1971

|                               | Power     |             | Briquette |          | Coal     |             | Services  |             | Transmission |             | Admin.   |          | Accounting |             | Personnel |             | TOTALS    |             |
|-------------------------------|-----------|-------------|-----------|----------|----------|-------------|-----------|-------------|--------------|-------------|----------|----------|------------|-------------|-----------|-------------|-----------|-------------|
|                               | No.       | \$          | No.       | \$       | No.      | \$          | No.       | \$          | No.          | \$          | No.      | \$       | No.        | \$          | No.       | \$          | No.       | \$          |
| January                       | 13        | 241         | —         | —        | 3        | 43          | 7         | 68          | 3            | 70          | —        | —        | —          | —           | 2         | 35          | 28        | 457         |
| February                      | 4         | 50          | —         | —        | 3        | 38          | 2         | 16          | 8            | 105         | —        | —        | 1          | 10          | —         | —           | 18        | 219         |
| March                         | 17        | 372         | —         | —        | 2        | 20          | 3         | 43          | 8            | 103         | —        | —        | 1          | 15          | —         | —           | 31        | 553         |
| <b>TOTALS</b>                 | <b>34</b> | <b>663</b>  | <b>—</b>  | <b>—</b> | <b>8</b> | <b>101</b>  | <b>12</b> | <b>127</b>  | <b>19</b>    | <b>278</b>  | <b>—</b> | <b>—</b> | <b>2</b>   | <b>25</b>   | <b>2</b>  | <b>35</b>   | <b>77</b> | <b>1229</b> |
| <b>Approx. Average Awards</b> |           | <b>\$20</b> |           | <b>—</b> |          | <b>\$13</b> |           | <b>\$11</b> |              | <b>\$15</b> |          | <b>—</b> |            | <b>\$12</b> |           | <b>\$18</b> |           | <b>\$16</b> |

# SPORT PARADE

## Shift Cricket Grand Final Winners



The grand final of the Latrobe Valley Mid-Week Cricket Association was held in March between Hazelwood 'A' and the Police.

Police batted first but were soon in dire straits as Len Hilditch took 4 for 9 in three overs.

The Police settled down, but floundered again when Ron Nicholas spun out their two top scorers.

Police finished their innings 8 for 123 after 25 overs.

Bowling: L. Hilditch 4-31, R. Nicholas 2-19.

Hazelwood's innings seemed likely to collapse when three of the openers were run out, but a sixth wicket partnership of 52 by Kevin Kerr and T. Whitmore enabled Hazelwood to coast to a reasonably easy win.

Hazelwood finished 6 for 125 after 22 overs.

Batting: T. Whitmore 50 not out, R. Nicholas 19, K. Kerr 18.

This was Hazelwood 'A's' second win in two seasons since entering the competition in 1967.

### The triumphant Hazelwood 'A' Cricket Team

*Back Row (left to right): D. Morriss, K. Kerr, L. Hilditch, A. Smith, E. Heeley, W. Morgan, R. Templeton. Front Row (left to right): Len Rawlings and Family, T. Whitmore, G. Whitelaw (Captain), Ron Nicholas, G. Foote.*

## YOU CAN'T WIN THEM ALL!

Rebels met the Big Smoke Pikers in the preliminary final of the Men's 'B' Grade Basketball Competition at the Morwell Stadium in March in a very close game. 'Pikers' started well and established a 20 point lead mid-way in the first half. Then Rebels came back to tie the score at half-time and both sides scored evenly during the second half to bring the game to a draw at the final whistle. An extra five minutes then had to be played to decide the winners, with both Rebels and Pikers throwing goal after goal.

With about three seconds left to be played and Rebels one point down, Garry Gallagher (Rebels) threw a spectacular goal with a long shot outside the key, making Rebels the winners by one point. Garry was carried off the court by his jubilant team-mates.

However, the Rebels did not fare so well in the Grand Final against Churchill (who had been on top of the ladder throughout the competition) and Churchill scored a clear victory to make them 1971 Premiers.



### Winners of the Preliminary Final — 'Rebels'

*From left to right: Rollo Roylance, Len Staff, Garry Gallagher, Leigh Dodd, Bob Smith, John Cornish (Captain and Coach), Brian Hutton and Garry Dodd.*