



CONTACT



THE STATE ELECTRICITY COMMISSION LATROBE VALLEY REGION MAGAZINE DECEMBER, 1970—JANUARY, 1971

WORK TO START ON BASE LOAD POWER STATION IN 1973

On his recent visit to the Latrobe Valley, Dr. Connolly said the people of the Valley need not be pessimistic about the future of brown coal. It is certain that brown coal will continue to be the source of most of Victoria's electricity for a long time to come.

The completion of Hazelwood and the bringing into service of Yallourn 'W' will enable base load requirements of the electricity system to be met until 1979 or 1980, while progressive Victorian entitlements from the Snowy scheme will cater for peak and intermediate load up to 1975.

The first item of additional plant needed after 1975 will be a power station to carry peak and intermediate loads. The most suitable station would be one fuelled by natural gas or oil and located close to Melbourne, which is the load centre of the system.

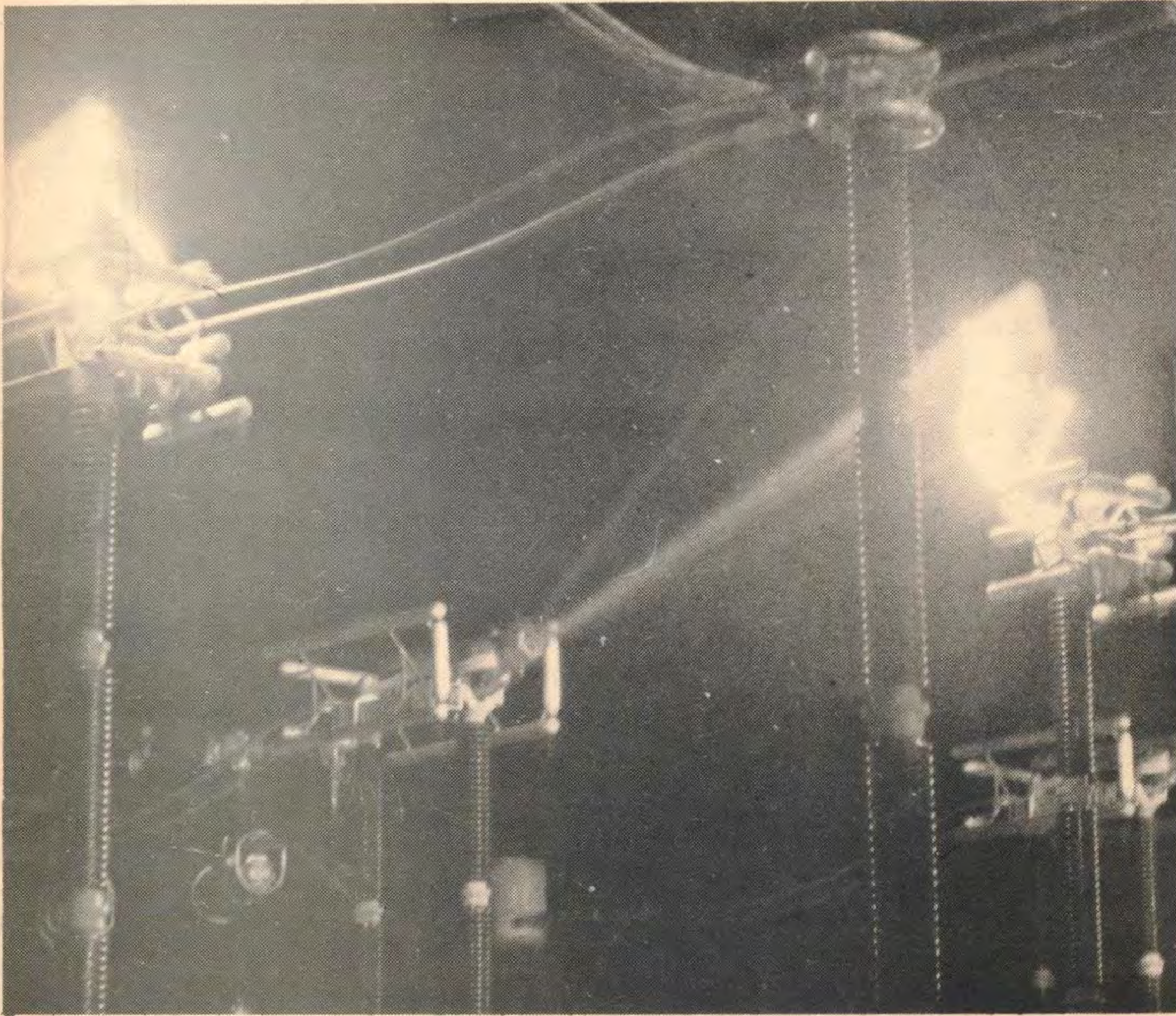
Field works for the next base load power station, for service in 1979 or 1980, will have to start about 1973 or 1974, roughly coinciding with the bringing into full operation of Yallourn 'W'.

The discoveries of natural gas and oil in the last few years are a valuable addition to Victoria's energy resources, but these fuels are not expected to be available in the large quantities necessary for base load generation. Nuclear energy offers a challenge in the long term to brown coal but will not be competitive during the 1970s.

The S.E.C. is therefore planning to construct the next base load power station in the Latrobe Valley at the appropriate time. It is expected an announcement will be made in 1972.

Let's hope that even this forecast will be improved upon in the not-too-distant future and conclude by wishing everyone the Compliments of the Season, with the sincere hope that an advance in timing of our next base load station will mean an early improvement in prosperity, which is my wish for all in 1971.

MANAGER
LATROBE VALLEY REGION

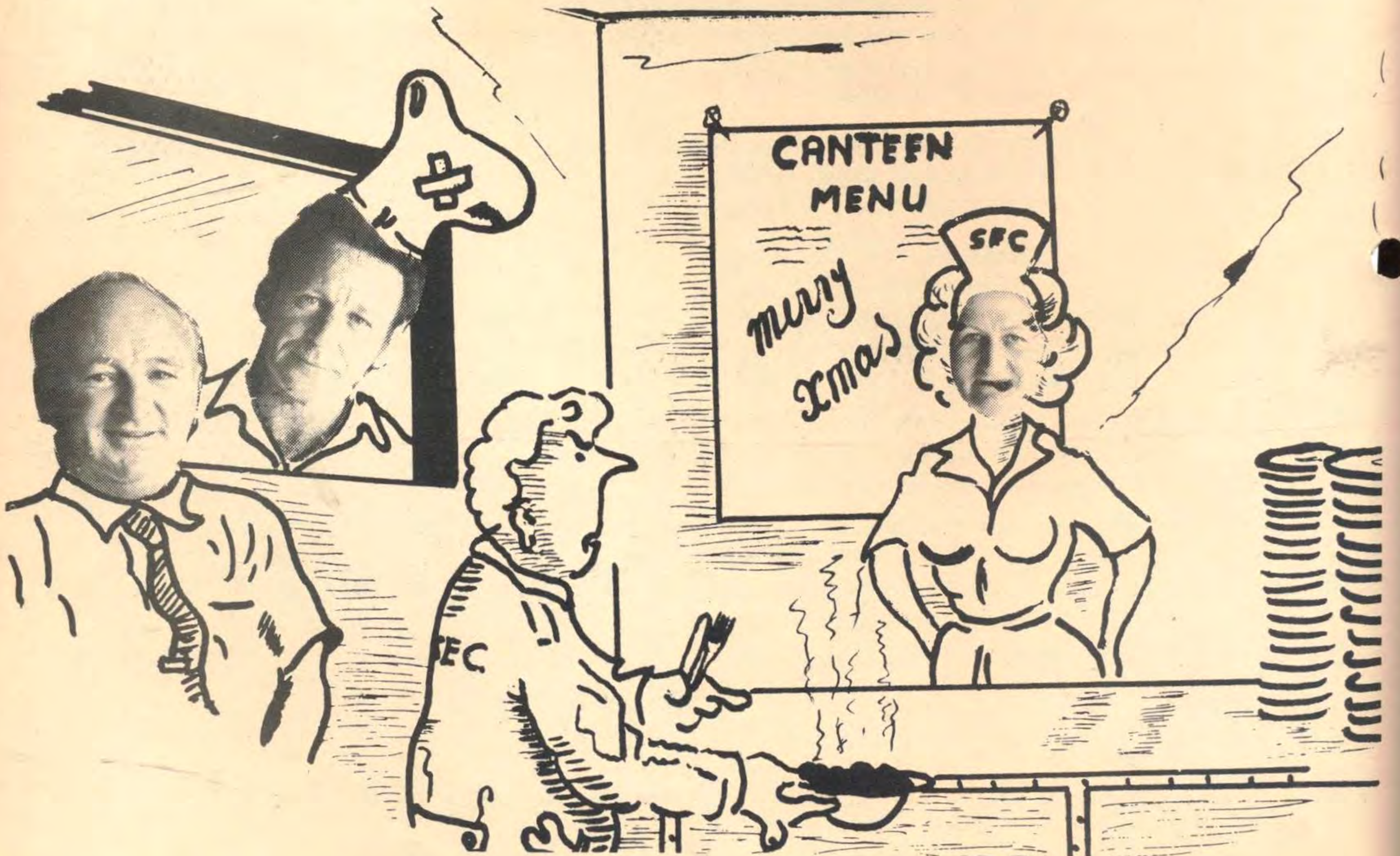


MAN-MADE LIGHTNING

This photograph shows a 500kV isolator at Hazelwood Terminal Station in the act of opening the magnetising — or energising — current of a 500kV current transformer and 650 ft. section of bus.

The electric arc, which was 4 feet in length, occurred when the air between the isolator fixed contact (at the bottom of the picture) and the moving blade broke down, or in electrical terms, became ionised, as the voltage difference between the two built up to 500 kV.

The photograph was taken at night, using a Kodak Century Graphic, with the shutter left open for 15 seconds. HP4 film was used with a setting of F5.6.



"What's he mean, the custard's lumpy? That's his Christmas Pudding!"



COMMISSION SCOLARSHIP HOLDER BUILDS MODEL OF 500KV TRANSMISSION LINE

Robert Allen attends Yallourn Technical College on an S.E.C. Scholarship.

As part of his final year Diploma Course, he has completed a project which, in the words of the Head of the Electrical Engineering Department, Ken Plowman, "is more than we expected from any student project".

Robert's project was to build a simulator designed to approximate electrical characteristics of the 500kV transmission lines.

The model operates at 415 Volts and the component values are such that the

behaviour closely follows that of the 500kV transmission line, thus enabling laboratory examination of transmission line behaviour at relatively low voltages.

A feature of the design is its flexibility which allows the following experiments to be performed:-

(a) The General Circuit Constants of the line can be experimentally determined. These constants can then be used to predict the performance of the line under various operating conditions.

(b) A 3-phase short circuit can be simul-

ated at the "receiving end" of the transmission line.

(c) Line impedances can be determined (including zero-phase sequence impedance).

(d) The effects of various types of load can be demonstrated.

(e) Unusual operating conditions which can arise during switching of the line can be shown.

In the photograph, Robert is discussing the model with Ian McDonald, Electrical Operations Engineer, who has been doubling as a part-time lecturer at the Tech.

CHRISTMAS FARE



By
TRINA WILLIAMS
Demonstrator
Gippsland Electricity Supply Branch



Although our climate at Christmas time is more appropriate for lighter fare, there are many amongst us who still appreciate the more traditional dishes associated with this season.

A beautiful browned chicken or turkey has been the basis of the main course for many years. Below I have assembled two mouth-watering dishes just a little different, but still in the festive mood.

Roast Duck

Prepare the duck and season with salt, both inside and out. Stuff the body with apple and raisin or sage and onion seasoning. Place duck on grid in baking dish with 1-2 tablespoons dripping and cover with well-greased paper. Roast in oven 450 deg., reset to 400 deg. Allow 20 minutes per pound and 20 minutes over. About 30 minutes before the duck is to be served, dredge the breast with flour and brown.

Serve with brown gravy, apple sauce, roast potatoes, green vegetables and an orange salad.

Apple and Raisin Stuffing

2 cups grated apple
½ cup chopped seeded raisins
1 tablespoon lemon juice
1 level teaspoon salt
Milk or stock

4 cups fresh white breadcrumbs
2 tablespoons melted margarine
1 dessertspoon sugar
Pinch cinnamon

Combine the apples, breadcrumbs and raisins. Add the remaining ingredients and mix lightly. The mixture should be rather dry, as the apples will add moisture during roasting. The body cavity should be only lightly filled with the stuffing.

Sage and Onion Stuffing

milk
1 tablespoon butter
4 cups fresh breadcrumbs

2 medium sized white onions
2 teaspoons finely chopped sage
Salt and pepper

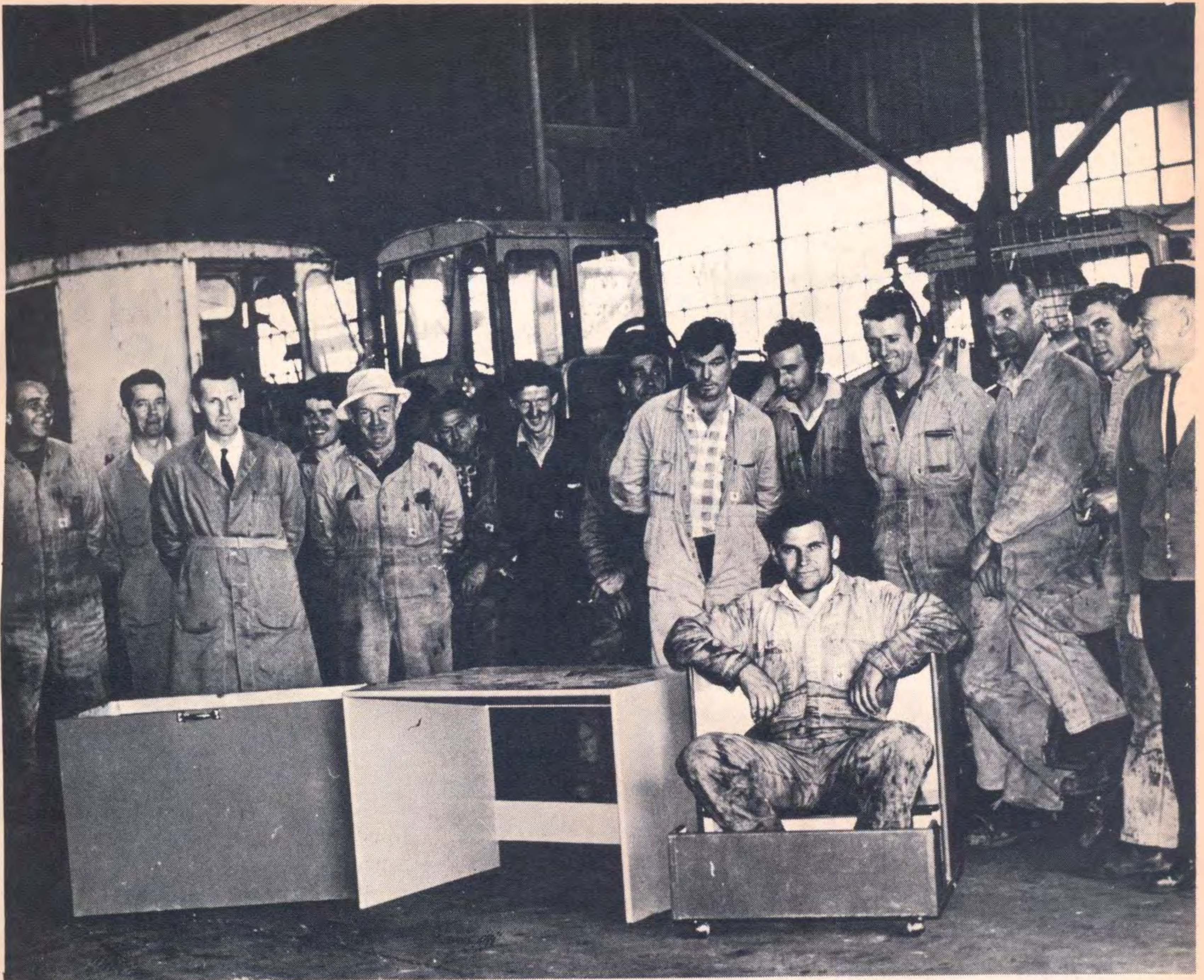
Peel the onions. Place in a saucepan with water to cover and boil until tender. Drain and chop finely. Combine with the breadcrumbs, salt, pepper and sage. Add the butter in small lumps. Mix all together thoroughly, adding milk to moisten if required.

Ice-cream Christmas Pudding

1 pint cream
4-6 oz. icing sugar
2 oz. toasted almonds
2 oz. cherries
½ cup raisins
2 oz. candied mixed peel
½ cup sultanas

4 egg whites
1 dessertspoon rum or brand,
1 dessertspoon mixed spice
1 teaspoon cinnamon
1 teaspoon nutmeg
4 teaspoons hot water
1 dessertspoon cocoa.

Marinate all fruit and spices in spirits overnight. Dissolve cocoa in hot water, beat egg whites and half sugar until stiff. Beat cream and remaining half of sugar. Fold together and blend all ingredients thoroughly. Place into 1½-2 pint bowl lined with aluminium foil. Freeze until solid.



A happier Christmas at Swan House

There aren't too many of them - 23 in all - but they have a big name - the Latrobe Valley S.E.C. Transport Workshops Social Club Morwell Branch.

They have a heart to match the name, too. Rather than spend their money on riotous living over Christmas, they unanimously decided to put it to better use and brighten the lives of the handicapped kiddies at Swan House, Traralgon.

The Club commissioned the Sheltered

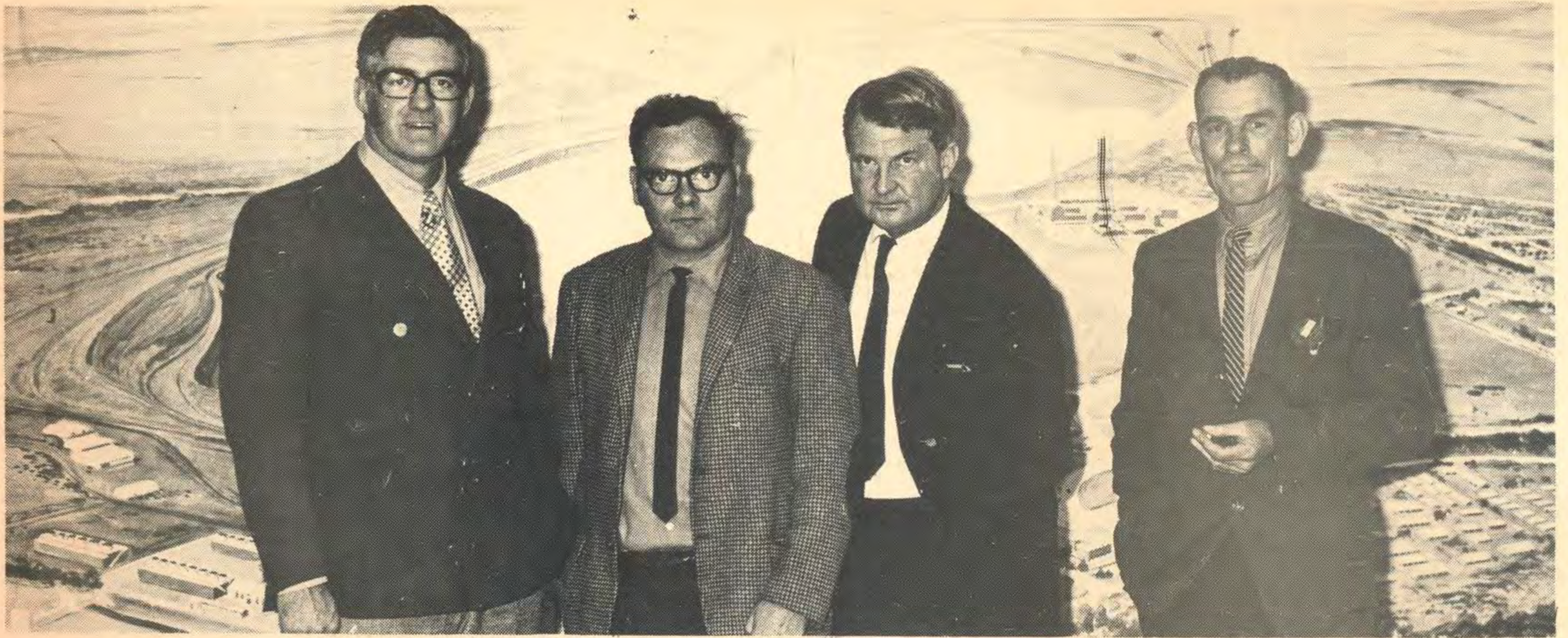
Workshops to make a multi-purpose play unit. Shown in the photograph above, this unit, mounted on castors, can be used as a train, desk, play table and toyholder.

A cheque was also presented to Swan House and this will be used to buy toys and party dresses for the children.

Some of the members of the Social Club are shown in the photograph above. From left to right: Vern Just, Charlie Marshall,

Bob Ulph, Allen Johnstone, Dick Boyanton, Bill Monk, Jim Hoban, Bill Lawrence, Kel Mayo, John Ormrod, Barry Flanigan, Les Cain, Mick Maxwell, Secretary Ted Feeheley and, in the box seat, Frank Cardillo.

Contact congratulates Ted Feeheley and his merry men for observing the true spirit of the Christmas tradition and so, we are sure, do the children of Swan House.



Mr. R. W. B. Carter, C.M.G., Deputy British High Commissioner, inspected the Commission's undertakings at Morwell and Yallourn on Wednesday, November 11. He is seen here with (L. to R.), Mr. Kevin Rohan, newly appointed Latrobe Valley Promotion Officer of the Division of State Development, Sandy Buchan, Project Engineer with Lewis Construction Co. Pty. Ltd. (Mr. Carter) and Mick Norton of Power Department, Yallourn 'W'.

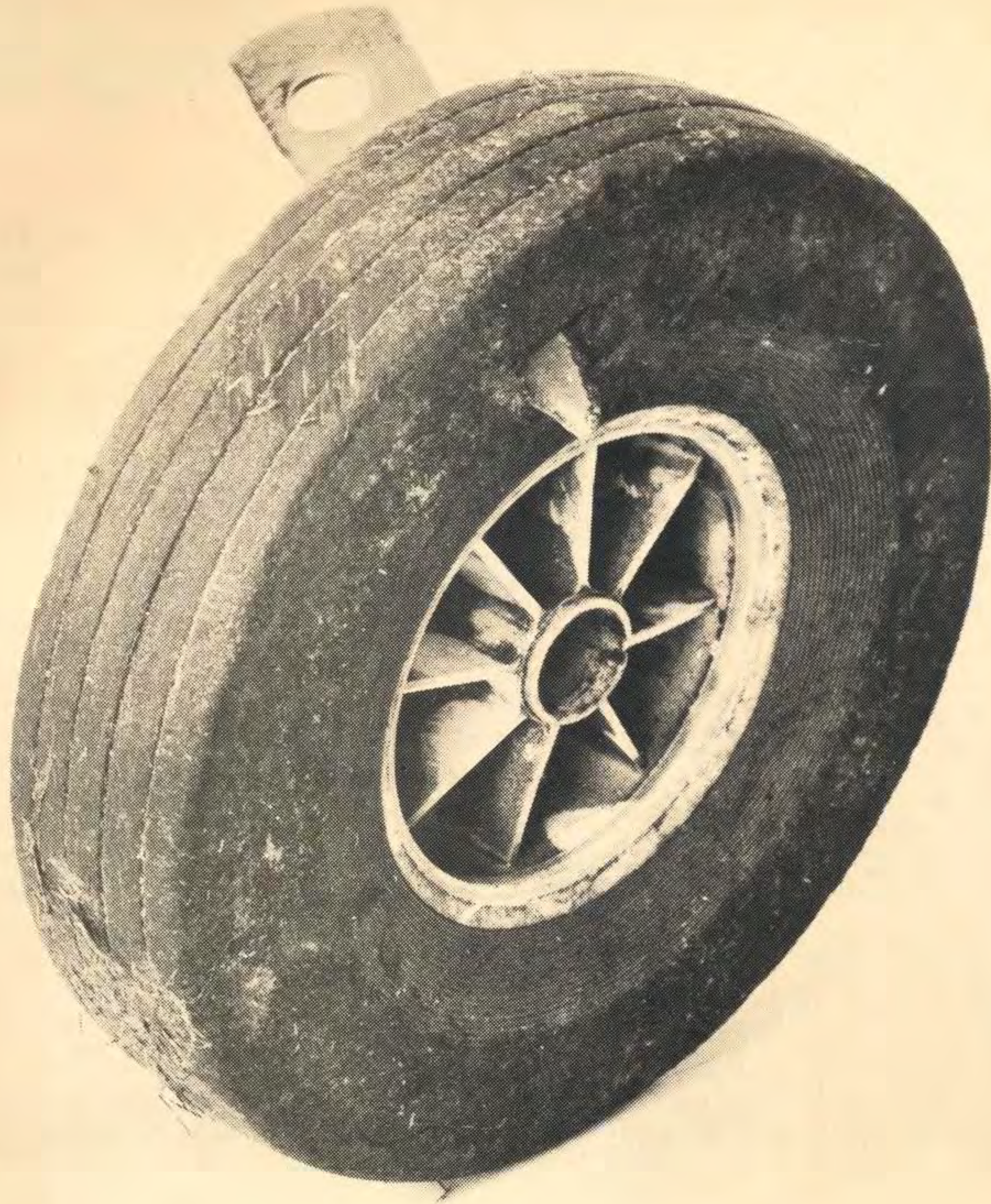
VALLEY VISITORS



Bob Purves, P.L.O., with a group of South Vietnamese visitors who toured the area last month.



Don Suckling, Briquette Sales Officer for Gippsland, with a group of heater marketing men from Myers.



ONE CLOSE SHAVE A DAY IS PLENTY

“I had cut the front lawn and nature strip and was half-way through the back lawn when I heard a rattle in the mower.” So said a Commission employee recently – and the photograph shows what caused the rattle – one blade half-way through the solid rubber tyre. We shudder to think what the blade would do to a foot or ankle.

For safe motor mowing – check the blade assembly regularly and don't mow without the guard – on your feet too!

VICTORIAN POWER BOAT CHAMPIONSHIPS

The Hazelwood Power Boat Club was host club for the Victorian State Inboard Power Boat Championships on Sunday, November 29.

A crowd of two thousand thoroughly enjoyed watching 80 of the top Victorian boats competing in 21 events.

This photograph shows “Stampede”, winner of the Unlimited Class, being closely pursued by “Black Knight”.



APPRENTICE AWARDS 1970

Over 350 people attended the annual Presentation of Awards to first-year apprentices, held at the Visitors' Reception Centre, Yallourn, on Wednesday, December 9.

Mr. Bill Schulz, Regional Manager, who presented the awards, praised the high standard of craftsmanship

evident in the display of apprentices' work. He went on to say that apprenticeship was a beginning, not an end in itself and that, if apprentices continued to study for the highest qualifications, they were capable of attaining, the sky was the limit.



The Manager, Mr. Bill Schulz, surrounded by the 1970 Award Winners. From left to right (back row) Ken Forbes, Stephen Harmer, Barry Hinson, Stuart Cropley, Peter Kinne and Roger Rejmer. Front row (L. to R.) Chris Kaczkowski, Ross Benjamin, Trevor Bye, Ken Markham, Mark Kilpatrick, Tony Stelling and Gary Chadwick.



The Outstanding Apprentice for 1970, Stuart Cropley holds his major prize — a two-speed power drill — whilst his mother and father hold the trade prizes also awarded to Stuart.



Bruce Davey, first-year apprentice Fitter and Turner points out some samples of his work to Mum and Dad at the craftsmanship display held at the Visitors' Reception Centre, Yallourn.



Stephen Harmer, First-Year Apprentice Coppersmith, who won the 'Other Trades' Award, shows an example of his work to his proud parents.

Award Winners

OUTSTANDING APPRENTICE:
Stuart Cropley.

TRADE AWARDS:

Boilermaking	— Ken Forbes
Fitting	— Stuart Cropley
Machining	— Barry Hinson
Electrical Fitting	— Chris Kaczkowski
Electrical Mechanic	— Trevor Bye
Instrument Making & Repairing	— Ross Benjamin
Other Trades	— Stephen Harmer (Coppersmith)

CENTRAL WORKSHOPS WELFARE COMMITTEE MOST IMPROVED APPRENTICE AWARD:

Boilermaking	— Anthony Stelling
Fitting and Turning	— Roger Rejmer
Instrument Making & Repairing	— Peter Kinne
Electrical Mechanic	— Ken Markham
Electrical Fitting	— Gary Chadwick
Other Trades	— Mark Kilpatrick (Moulding).

BOMBS AND MISSILES

UNGUIDED MISSILES

by COL. HARVEY, Regional Safety Engineer

In one of our workshops recently, a very dangerous situation developed when a blow-back flashed into an oxygen cylinder, changing the cylinder from a storage unit into a potential bomb. It happened this way:—

Contrary to standing instructions, when a welding job was finished the gas isolation was made only at the torch and not at the oxygen and acetylene cylinders as well. It is presumed that a leaky oxygen connection then drained the oxygen cylinder over the next couple of days.

The operator lit the torch for another job without checking the cylinder contents and torch pressure gauges, then realised that no oxygen pressure was available, left the oxygen torch valve open and closed the acetylene torch valve. Flash-back occurred into the oxygen cylinder.

The operator quickly turned off both cylinders at the regulators and found that

the oxygen cylinder was getting hot. The regulator was removed, the cylinder was taken from the trolley and ROLLED ALONG THE CONCRETE FLOOR FOR ABOUT 40 YARDS until it was outside the workshop.

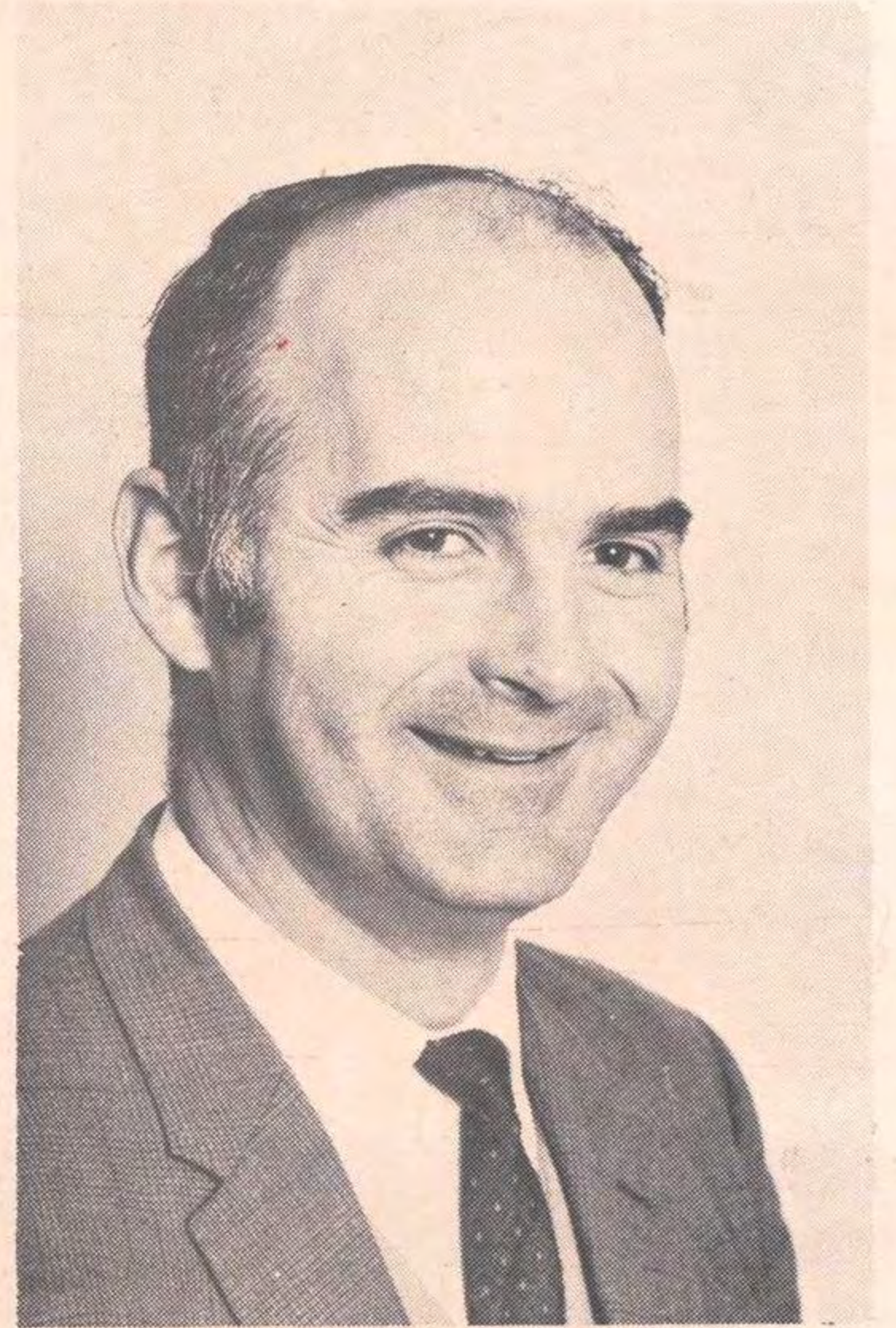
This chapter of errors of disaster potential highlights the need for strict observance of operating procedures and emergency procedures for oxygen and acetylene cylinders.

EMERGENCY PROCEDURE

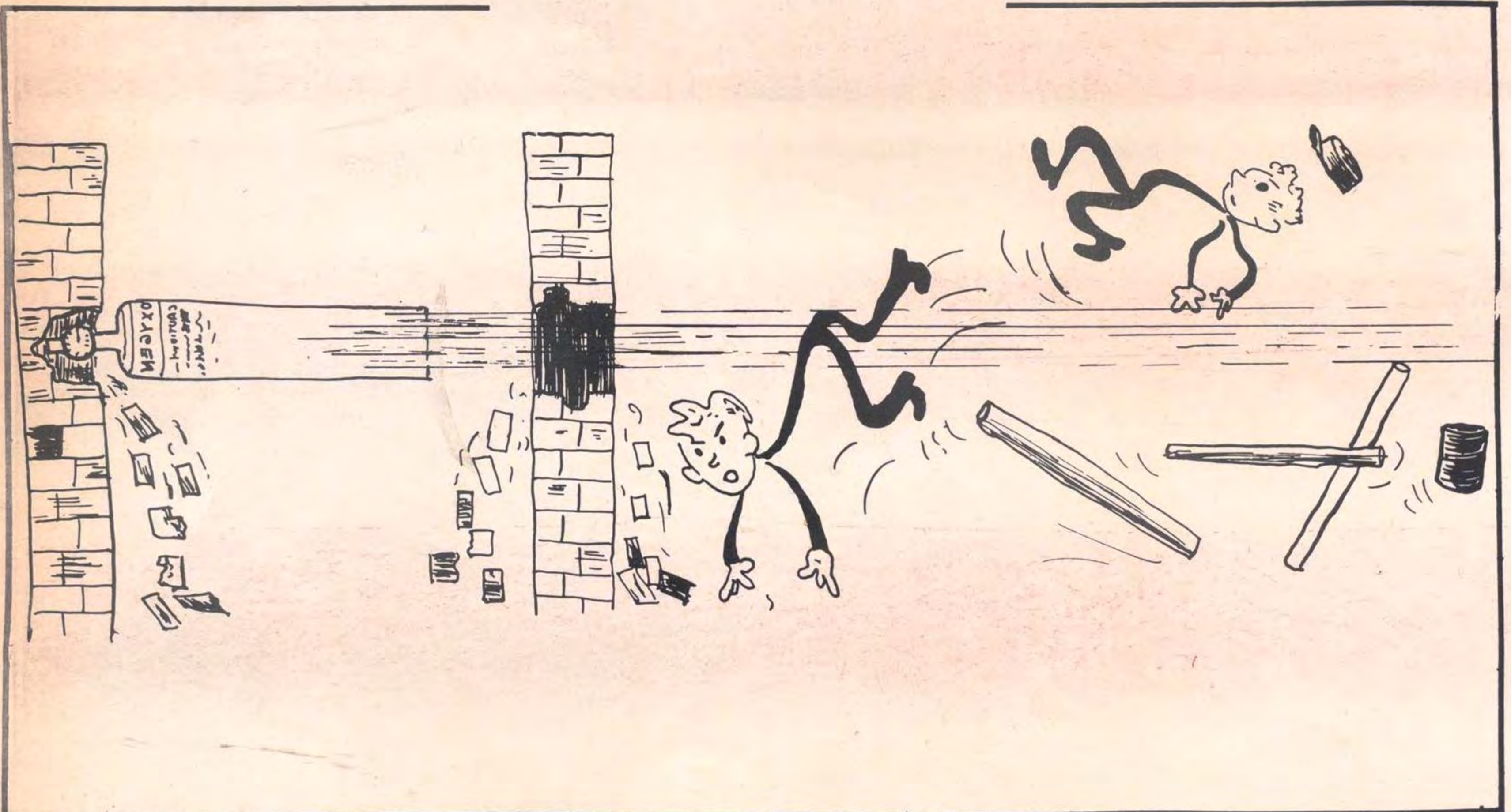
If a cylinder is alight or heated accidentally or becomes hot due to flash-back, action should be PROMPT:—

1. Shut the cylinder valve.
2. Clear all personnel from the area.
3. Summon fire brigade. Do not extinguish flame. Cool the cylinder with water from cover.

The fire brigade was summoned, the cylinder was cooled and its contents released to atmosphere. The cylinder was returned to C.I.G.



COL. HARVEY



NORMAL PROCEDURE FOR SETTING UP OXY-ACETYLENE EQUIPMENT

1. Crack Open cylinder valves and blow out foreign matter.
2. Attach regulators to cylinders with correct spanner.
3. Make sure regulator adjustment knobs are released.
4. Close control valves on torch.
5. Open cylinder valves slowly - approximately one turn on key.
6. Check cylinder contents.
7. Set welding or cutting pressures with regulator adjustment knobs.
8. Open fuel valves - light torch - adjust flame, using both hands.

Reverse procedure to close down equipment - in case of flash-back, close OXYGEN valve at once.

NOTE: Self-adhesive 6" x 3" labels showing normal procedure are available from the paint shop at the Yallourn Central Workshops.

Further safeguards which may be used are C.I.G. hose check valves which replace present hose to torch connections. These connections contain a non-return valve which makes flash-back down the hose almost impossible.

C.I.G. catalogue numbers are LP271 - right hand thread; LP 272 - left hand thread.

As well as becoming a potential bomb, a cylinder of compressed gas can act like a misguided missile. The following two cases are quoted in the July, 1970, Safety Newsletter of the U.S. National Safety Council.

1. A welder failed to secure the two cylinders (oxygen and acetylene) he was using. The oxygen cylinder fell, shearing off its valve. The cylinder became a rocket that sped through the building, tore out process lines and equipment and finally drove itself through two brick walls.
2. Lives were imperilled and one-half million dollars of damage occurred in a matter of seconds when an unsecured CO2 cylinder fell off a truck in an aeroplane hangar. The cylinder lost its valve and became a jet-propelled missile that smashed through several planes, struck and broke the building's fire sprinkler system and then streaked across the premises and through a concrete wall to the outside.

SOME BASIC PRECAUTIONS FOR PREVENTING SUCH ACCIDENTS

- (a) Keep valve protecting caps on all cylinders whenever they are not in

- use - full or empty. Caps should be secure - straight and snug.
- (b) Never leave cylinders standing alone. At all times, they should be secured upright in racks, or chained so that they cannot fall, whether in storage or on a hand truck.
- (c) Don't keep cylinders in locations where objects can fall on them or where they can strike each other hard.
- (d) Avoid dragging or sliding cylinders, and under no circumstances, use them as "rollers" for moving other material. Move them with an approved hand truck.
- (e) Store cylinders away from flame or heat.
- (f) Keep cylinders and fittings oil and grease free.
- (g) Don't use a wrench or other tool not specifically provided to open the valve of that particular type of cylinder.

By not following the above procedures, those who use these materials will ensure that they continue to use them without causing injury to themselves or to others.

It is better to follow the rules and be an old stick-in-the-mud than skip a few and permanently stuck in the ground.

L.P.G. CYLINDERS

BY

Neil Long

BOILERMAKER SUPERVISOR, MORWELL WORKSHOPS

At this time of year most people are preparing for some type of holiday. Each person has his own ideas for recreation and we are fortunate in Australia that we have so many areas for relaxation.

Over the past few years, camping and caravan equipment has improved considerably. The camper no longer has to rough it, cooking over an open fire and sleeping uncomfortably on the ground. The caravan owners now tow away a mobile home, complete with lights, stove, oven, refrigerator and sometimes a hot water service.

One of the most important advances in camping equipment is the use of liquid petroleum gas. This gas is marketed under many trade names, such as "Heatane", "Handigas", "Portagas", "Carigas", "Shellgas", etc. However, it is mainly commercial propane, consisting of 88% propane and 10% propylene.

This gas is used for cooking, heating, lighting and refrigeration in tents and caravans; used correctly, it is harmless to handle. One important feature of the gas is that it is HEAVIER THAN AIR and should never be released unburnt in enclosed spaces. If released inside tents and caravans, the gas will sink to floor level

and gather under cupboards and benches, etc., thus forming a hazard.

By law, L.P.G. cylinders are not allowed to be used inside caravans and boats. They should either be housed in a recess, vapour-tight accessible from and vented to the outside, or located on the chassis as near to the tow-bar as possible. On a boat the cylinders can be on the deck, no closer than 3 feet to ANY opening to the inside of the boat.

In both these instances the gas must be run through a regulator at a pressure no higher than 10 lbs. to 1 sq. inch. Tubing used in caravans and boats must be seamless copper, having an outside diameter of no less than 1/4" and a wall thickness of no less than 0.036".

There are two types of gas appliances in general use: one type operates directly from the cylinder, without a regulator, the other type requires a regulator set to less than 10 lb. to 1 sq. inch. These stoves will not operate on the other pressure; so make sure your appliance is the correct one.

The pressure in an L.P.G. cylinder varies with the air temperature and is approximately 92 lb. to 1 sq. inch at 60 deg. F. and 175 lb./sq. inch at 100 deg. F. The gas is in the cylinder in liquid form and if the cylinder is not fitted with a contents gauge, the correct way to measure

the contents is to weigh the cylinder. The gross and tare weights are stamped on the cylinder and so it is easy to find out

the contents of the cylinder.

Always be careful with L.P.G. cylinders. If the gas or liquid comes in contact with the eyes or skin a painful burn or frostbite will occur.

L.P.G. liquid is often decanted from a large cylinder to a small cylinder. This should only be done when a correct type of decanting cylinder is used and both cylinders must be in an upright position.

Each cylinder from 20 lb. capacity is fitted with a safety valve set to operate at 375 lb./sq. inch. If the cylinder is turned upside down for decanting, the liquid freezes the safety valve and so stops it from operating in an emergency.

The law requires a distinctive and unpleasant odour to be added to the gas. If this odour can be detected when using an appliance look for it by using a mixture of soap and water on the joints and fittings.

DO NOT USE A MATCH OR FLAME.

To sum up, when camping L.P.G. is one of the most useful gases available. If handled correctly, there is no danger to the user and its cleanliness and simplicity makes camping a pleasure.

S.E.C.- A.P.M GOLF DAY



Mr. John Barassi, Resident District Manager of A.P.M., Maryvale receives the 'Stan Aitken' bowl from Mr. Bill Schulz.

The annual battle for golfing honours between the paper boys at A.P.M., Maryvale and S.E.C. stalwarts from the Morwell/Hazelwood area was held in ideal weather conditions at the Traralgon Golf Course on Saturday, November 21.

More than 80 participants sliced, hooked or scrubbed their way around the 6,300 yards from tees to greens with the A.P.M.

fellows proving just a little too good for our team, scoring 876 to 867 stableford

points. Individual scores ranged from 2 points to 39 points.

In the four years of competition, this was the first time that A.P.M. has won the aggregate trophy.

Winners of individual events were:-

A.P.M. - 'A' Grade: Les Galvin, 'B' Grade: Brian Cooper.

S.E.C. - 'A' Grade: Lindsay Johnson, 'B' Grade: R. 'Sandy' Lestrang.

Longest Drive: Keith Angove (S.E.C.)

A delightful luncheon was prepared by the wives of some of the competitors.



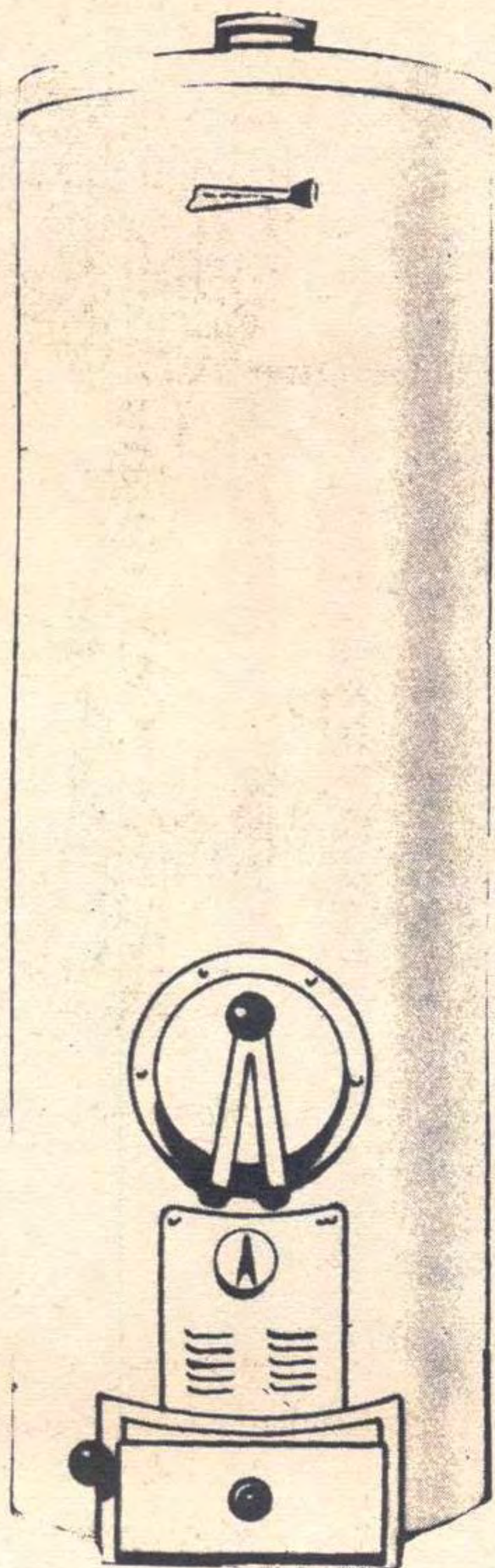
'Sandy' Lestrang receives the Ron McMillan Memorial Trophy from the Manager, Mr. Bill Schulz. This trophy, to be held by Sandy for 12 months, has been made available to perpetuate the memory of Ron McMillan, who was employed as a painter at Morwell until his untimely death in June this year. He had been a regular competitor in A.P.M./S.E.C. golf days.



Lindsay Johnson (Survey Section), who helped organise the function, tells about his golfing prowess which won him a trophy.

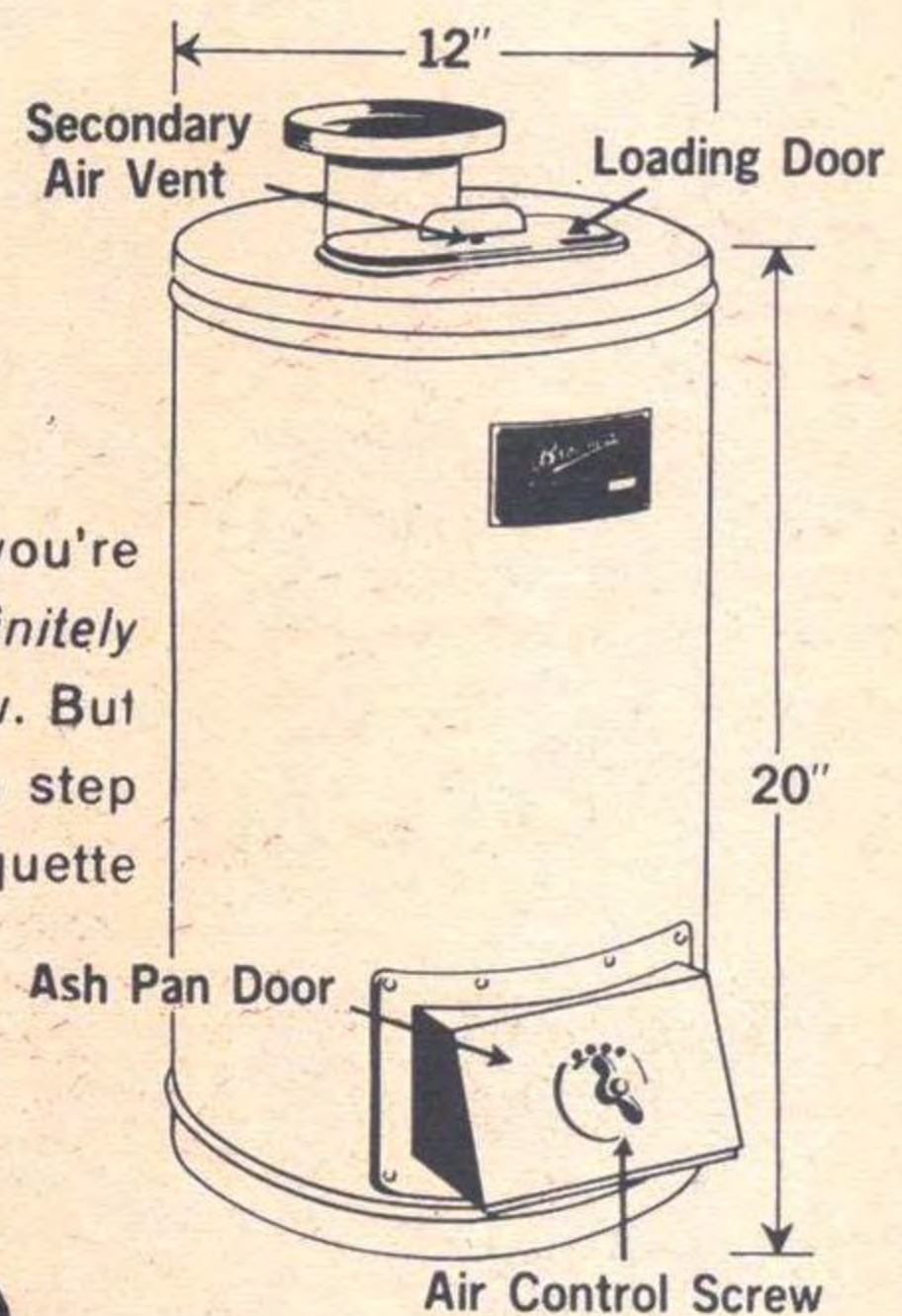
hot water problems are over!

**UNLIMITED HOT WATER
WITH A MODERN BRIQUETTE
HOT WATER SERVICE !!!!!!!**



**BRIQUETTE HOT WATER
CIRCULATOR UNIT**

HOW TO IMPROVE YOUR EXISTING HOT WATER SERVICE—Unless you're building a new home—in which case a modern Briquette Hot Water Service is *definitely* your best choice—you may not wish to install a new hot water service just now. But if your present service is proving inadequate or too expensive to run, you can step up its efficiency and get unlimited, cheap hot water by linking it up with a Briquette Hot Water Circulator



free

**1/2 TON
BRIQUETTES
WITH EVERY BRIQUETTE
HOT WATER UNIT**



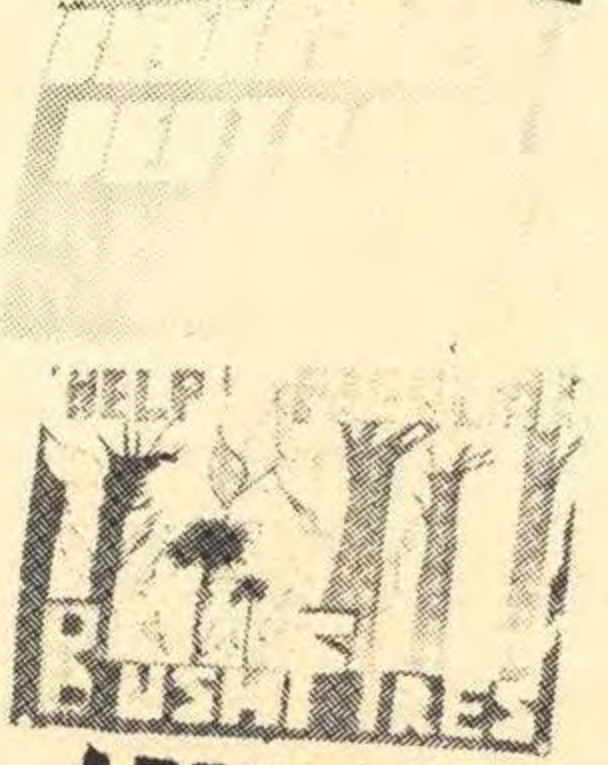
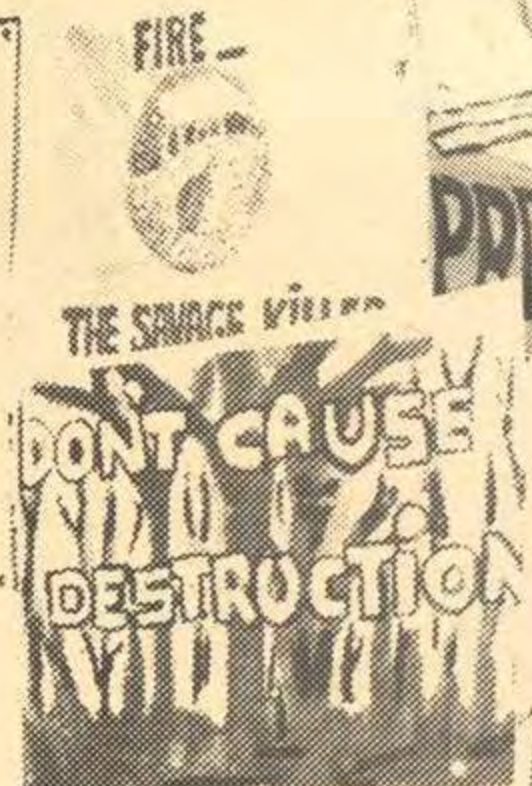
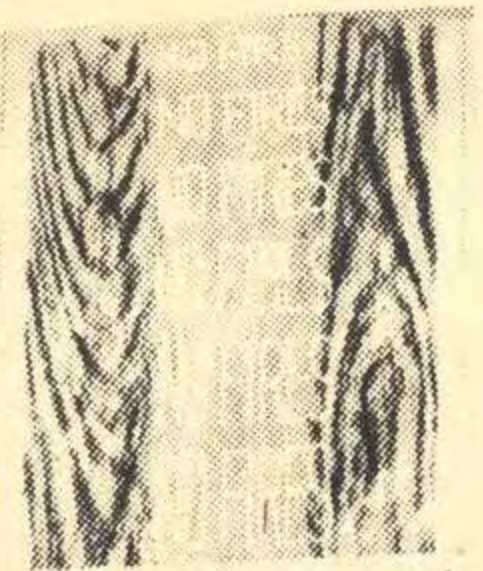
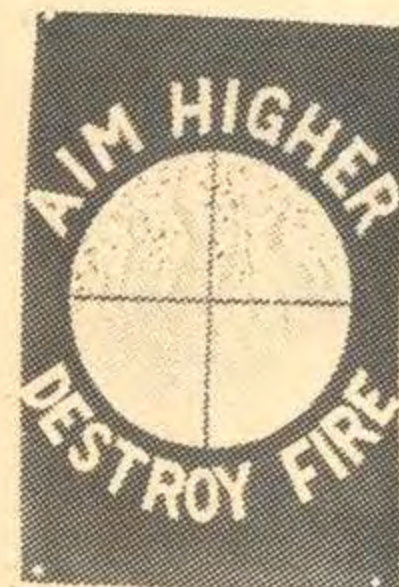
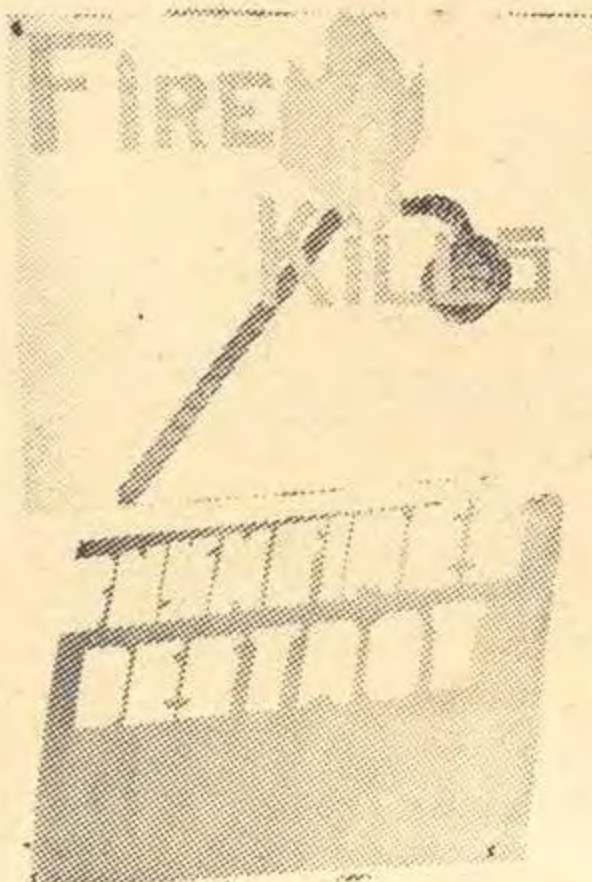
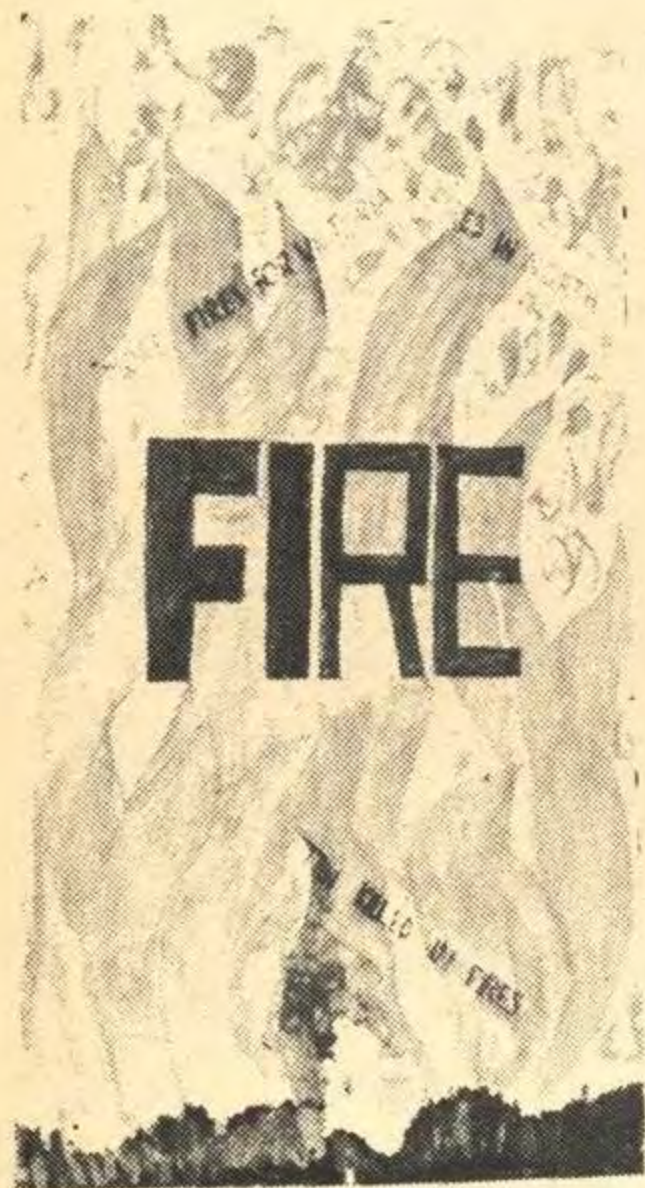
ENQUIRE NOW AT YOUR NEAREST
**BRIQUETTE ADVISORY
CENTRE**

FIRE PREVENTION POSTERS

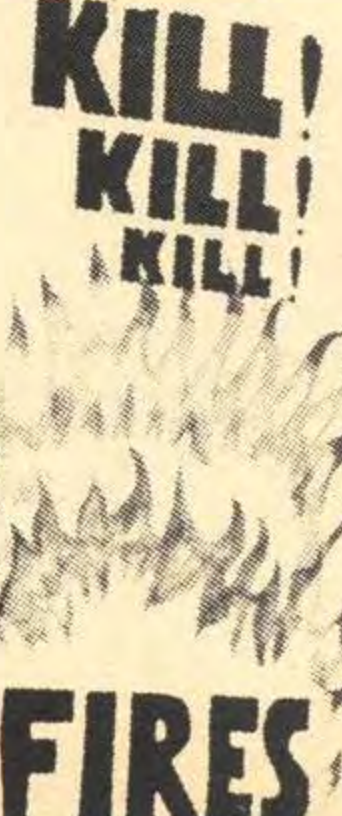
Here are some of the posters submitted as entries in a contest organised by the Commission as part of a fire prevention campaign among school children.

Mr. Max Gray, Regional Services Engineer, who presented prizes to the school children, commented on the high standard of entries this year.

With Gippsland's summer upon us, it would pay all of us — not just the school children — to bear the various messages on the posters in mind.



DOWN WITH FIRES





FAMILY SAFETY NIGHT

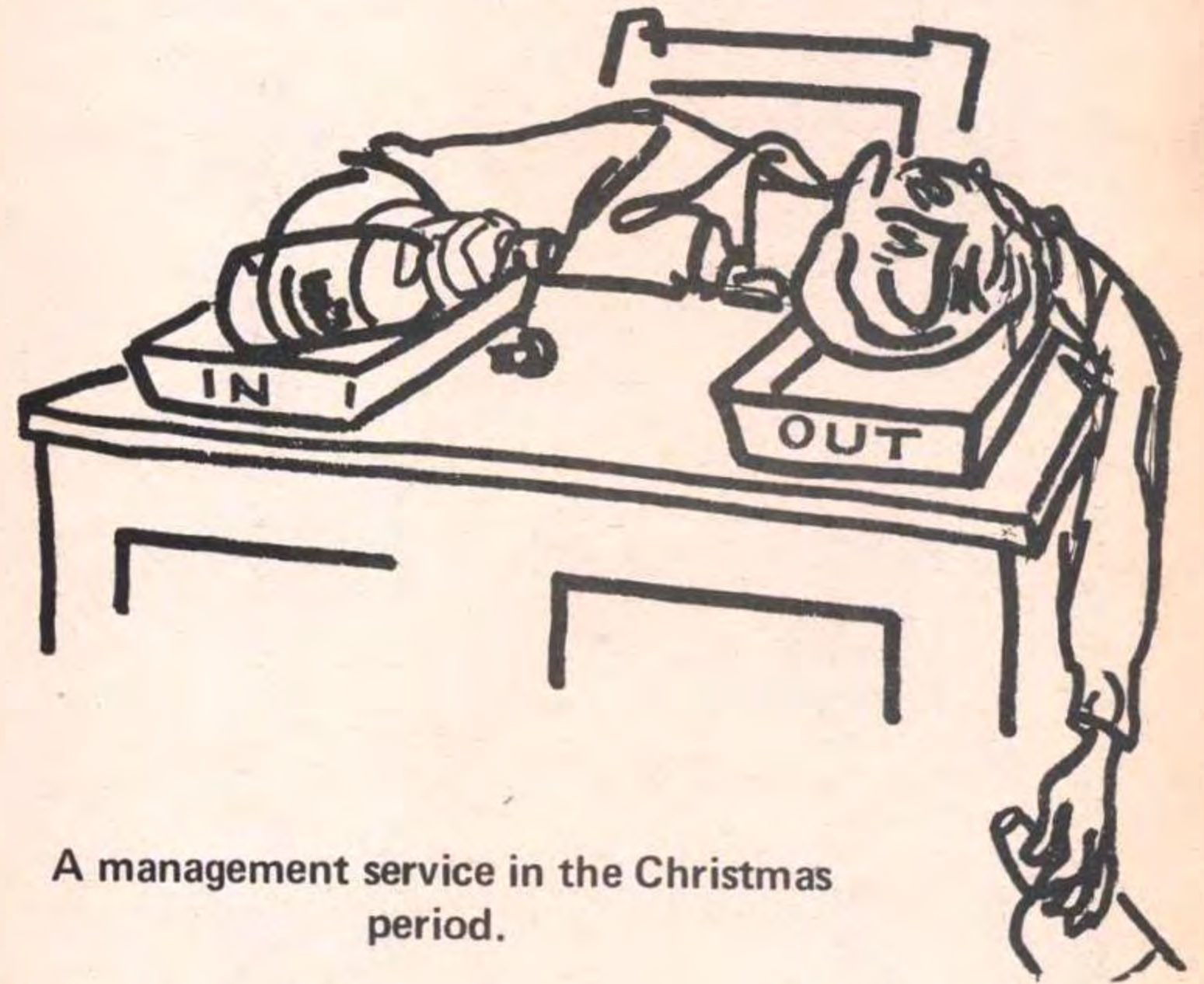
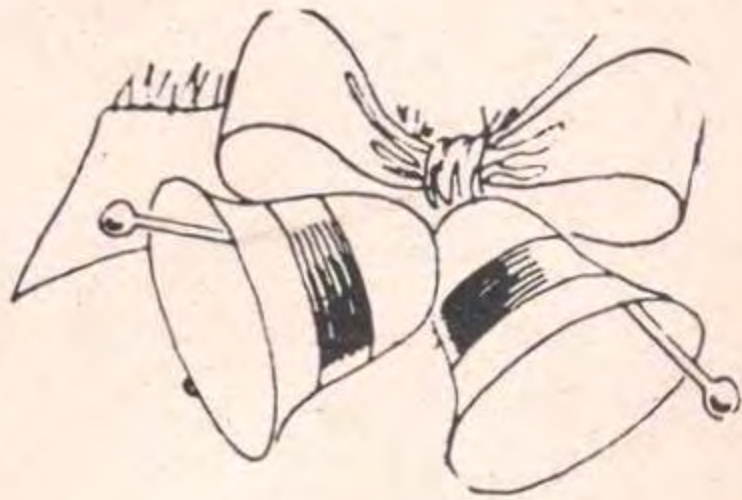
An instructive and enjoyable evening was the verdict of those who attended the Administration Division's Family Safety Night at the Lecture Room, Visitors' Reception Centre, Yallourn on Thursday, December 3.

Films and lectures were followed by a supper at the West Mess.

In the photograph, Geoff Mounter, Regional Chemist, answers questions from the audience, with Dave Poole in his capacity of Part Time Safety Officer acting as backstop.

MARRIAGE NOTICE

FRESHWATER, Mr. Graeme (Engineer, Coal Division, Morwell), to Miss Jeanette Loye of Morwell, on December 12, at Morwell.



A management service in the Christmas period.

SUGGESTION AWARDS - 1970

MONTHLY FEATURE

LATROBE VALLEY REGION

	Power		Briquette		Coal		Services		Transmission		Administration		Accounting		Personnel		Totals	
	No.	\$	No.	\$	No.	\$	No.	\$	No.	\$	No.	\$	No.	\$	No.	\$	No.	\$
January	16	167			2	26	4	54	2	115	3	68					27	430
February	11	195	3	38	2	20	8	102	2	14					1	10	27	379
March	9	130					3	68	1	50					1	8	14	256
April	3	110	1	8	5	88	3	36	4	37							16	279
May	14	280	6	228	1	8	4	63	4	128			1	10			30	717
June	9	197			6	64	5	40	2	23	3	30	1	25			26	379
July	8	123			11	127	3	31	3	65	2	25	1	8			28	375
August	29	469			4	60	11	130	4	60	2	16					50	735
September	5	190	1	8	1	332	6	231	1	8							14	759
October	9	166			1	25	3	43	1	8					4	30	18	272
November	6	138			2	20			2	20					1	8	11	186
Totals	119	2,155	11	282	35	770	50	798	26	528	10	137	3	43	7	56	261	4,769
Approx. Average Awards		\$19		\$26		\$22		\$16		\$20		\$14		\$14		\$8		\$18

CONTACT

Transport Workshops (Yallourn) doubles championship in Indoor Bias Bowls was decided last week with Wally McWilliams and Barry Fowler taking the honours. Their opponents, Terry Barclay and David Hill, forced them to a 5-4 struggle. To Wally and Barry, this column's congratulations.

It does not take the Transport boys long to be back in full session in the almost continuous series of teams' competition of the Indoor Bowls. A new series commenced last week and up to date - it's been one for the birds - the two leading teams to date are The Emus under the guidance of Ron Robertson and

the Sparrows lead by Denis Scambler. In a previous series there was a team known as the Deliriums, but don't know if they're gone into a "dream" or retirement.

Recall these two blokes - Brian Ryan (Mechanical Engineer) and Peter Rich (Administration) both of Hazelwood who proclaimed that they were the best 500 players in the Latrobe Valley; well they were soon told to "test their steel" Two TSO's in Hazelwood, Jack Mussard and Jim Skelton, have answered "prove it". Elect. Fitter, Noel Cameron (with a Mystery partner) has also cast doubts about the Ryan-Rich combination being so good - so the gauntlet has been thrown down. Further still, Yallourn North's Viv Gore, and a player known to most as "Horse" says it will be no easy gallop for

the two "R's". And just quietly, hear tell that top men in Power Station and Mechanical - Charles Prust and Merv Sunderland - have been seen practising assiduously. Please Note - challengers! Only cards admitted to games must have the seal unbroken.

Secretary of the Moe City Rifle Club, Malcolm Charles of Mechanical Construction, Morwell is tipped by top sharp-shooter, Alan Schroeder, to be one of our most promising rifle shots in the Valley. Winning the Tyre Aggregate with the rather remarkable score of 143 out of a possible 150 at the Moe Open Championships early this month in a grand effort - it was even better than it looks as M. was only four points behind the winner of the Open event.

STOP PRESS

Coverage of the various Social Clubs' Christmas functions will appear in the next issue of Contact.

