

*Rooney*

# CONTACT



THE STATE ELECTRICITY COMMISSION LATROBE VALLEY REGION MAGAZINE – NOVEMBER, 1970

## AUSTRALIA IS A WONDERFUL NATION

Now that I'm back from the world tour my wife and I made during my long service leave, I can in all honesty say that there is no country in the world to compare with Australia.

I don't think most of us realise how fortunate we are to live in a country which has so much to offer right this minute and which holds so much promise for the future.

I enjoyed my stay in Britain, but I must admit to feeling just a trifle sad at the adverse effect that the "cradle to

grave" welfare state has had on Britain's impact on world markets.

West Germany impressed me as possessing the very reverse outlook to the British. The Germans are intensely aware of the necessity of maintaining a highly competitive position in the international market place if their already high standard of living is to improve.

Japan, of course, is also very much aware of this need to be competitive, but there the pressure of demands for higher



### MANAGER'S MESSAGE

by  
Mr. J. W. Schulz

wages without a corresponding boost in productivity is gradually reducing their ability to penetrate world markets as they have done for the past twenty years or so.

In fact, conditions in Japan are following the path of the United States, where uncontrolled wage increases have resulted in galloping inflation to the detriment of export earnings.

Australia is a wonderful nation, but we must all keep in mind that if we don't learn our lesson from the experiences in other parts of the world our present way of life could rapidly deteriorate to a stage where there would not be much to choose between Australia and some of the less fortunate countries.



*A cluster of yachts with their crews making last-minute adjustments, immediately before the sailing season of the Latrobe Valley Yacht Club was officially opened by the Manager, Mr. Bill Schulz, on Sunday, October 25.*



# AQUATIC CENTRE OPENED

On Sunday, October 25, Mr. Bill Schulz formally opened the Hazelwood Pondage Aquatic Centre.

Mr. Schulz said that the Centre was in every sense a community project and was intended to be used by all sections of the community who were interested in water sports.

Mr. Schulz, commenting on the modern and comfortable new clubhouse, said that the sailing and racing facilities in the Latrobe Valley were now equal to anything provided anywhere in Victoria.

Mr. Schulz is shown unveiling a commemorative plaque, whilst Yacht Club Commodore, Jim Wyeth, surveys the scene with a satisfied air.

PAGE 2 - CONTACT

# FIRST AID ZONE FINAL WINNERS

The local zone final of the First Aid Competition was held at the Visitors' Reception Centre, Yallourn, on Wednesday, October 21.

The general standard of all teams competing was very high and Perc Mooney's set inspired some realistic performances from the "patients"

The winning team, Yallourn Coal Production No. 1, will represent the Latrobe Valley Region in the grand final, held in Melbourne on November 27.

Mr. Graham Black, Assistant Manager,



T. Ainsworth, A. Young, J. Tangey (Capt.) A. Durrand.

who presented the winning team with its trophy, said he was greatly impressed by the efficiency and enthusiasm shown by all teams. There was very little margin separating the winners from the two teams who shared second place - Forestry and Municipal.

Other teams who competed were Stores, Yallourn, Morwell Power Station, Yallourn Coal Production No. 2, Morwell Briquetting Factory, Yallourn Power Station and Morwell Coal Production.



"I'm told the station designer came from somewhere in Italy!"



## T.V. SET-UP FOR TRAINING CENTRE

Next year, Commission personnel on training courses at the Regional Training Centre will be able to see themselves on T.V.

A complete Video Tape Recording system, consisting of two T.V. cameras,

one of which will be in a fixed location, two recorders and a number of monitors will be installed.

The system will enable practice sessions, skill courses and demonstrations to be recorded and played back immediately, so that instructors and participants in various

courses can evaluate their own performances. These will mostly be covered by the fixed-location camera.

The movable camera should prove invaluable for recording sessions in the field for later play-back in the classroom.

---

## STATE POWER BOAT CHAMPIONSHIPS AT HAZELWOOD AQUATIC CENTRE

The Hazelwood Power Boat Club will be Host Club for the Victorian State Inboard Power Boat Championships, to be held on Hazelwood Pondage, Sunday, November 29.

Approximately 80 top-class Victorian boats

will compete in 21 events, including class, open class and unlimited events. This should ensure a full day of spectacular racing, commencing at 9.25 a.m.

Club members have been busy improving the existing facilities with a new control

tower and extra launching ramp space. Lunches, snacks and light refreshments will be available throughout the day. Your support for this event will help the Club to improve the area to the benefit of all who enjoy power boating and water-skiing.

CONTACT - PAGE 3



# S.E.C. GOLF CHAMPIONSHIPS

A field of 200, including more than 70 visitors from many areas of Victoria — Melbourne, Colac, Bendigo, Castlemaine, Benalla, Leongatha and Horsham among them — contested the S.E.C. Social League's Annual Golf Championship at Yallourn Golf Club on Sunday, November 1.

Representatives of S.E.C. Social League who came down from Melbourne for the day were — George Harris - President, Garnet Loveless - Secretary, L.R. 'Mick' Green - Assistant Secretary and Rex Job.

Trophies were presented by Mr. J.W. Schulz, Manager, Latrobe Valley Region, Mr. Frank Tomlinson, President Yallourn Golf Club and Mr. George Harris, President, S.E.C. Social League.

Thanks for a most successful day are due to Yallourn Golf Club Committee, S.E.C. Catering Staff - Len Cox, Jim Ludlow and girls, Jim Minster (Starter), Tom McAllister, Brian Cheshire, Peter Tabart Jr., Dick Gough and Bob Purves (Recorded Scores), Alan Kain - Yallourn Golf Club Manager and the donors of the various trophies.

Bob Goldie shows the style that won him the Championship Scratch Trophy.



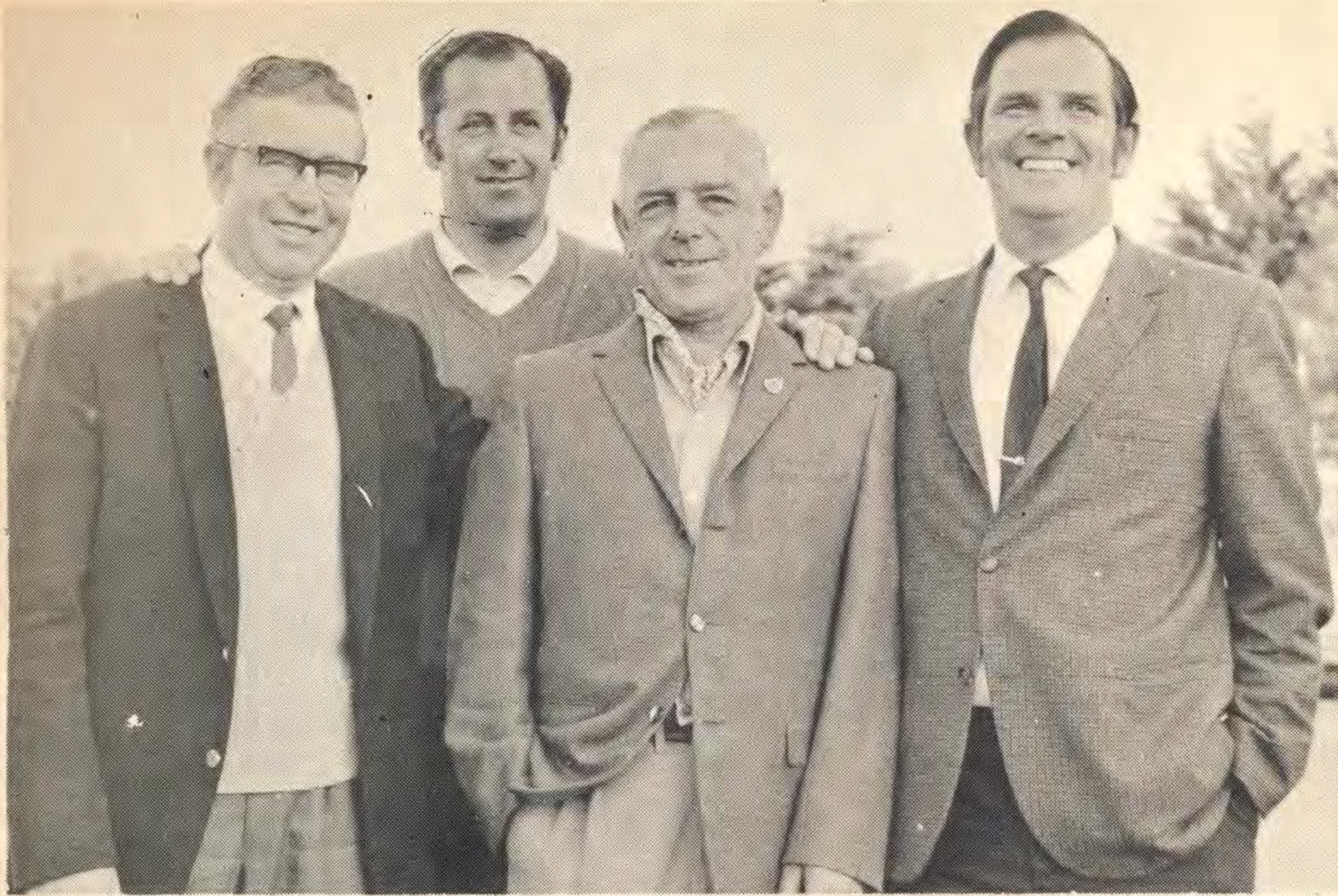
Getting down to the serious business of checking scores — from left to right, Bruce Knight, Tests and Communications; Noel Connelly, Survey; Kevin Goldie, Drawing Office (H); Mervyn Graham, Drawing Office (M).

## INDIVIDUAL WINNERS

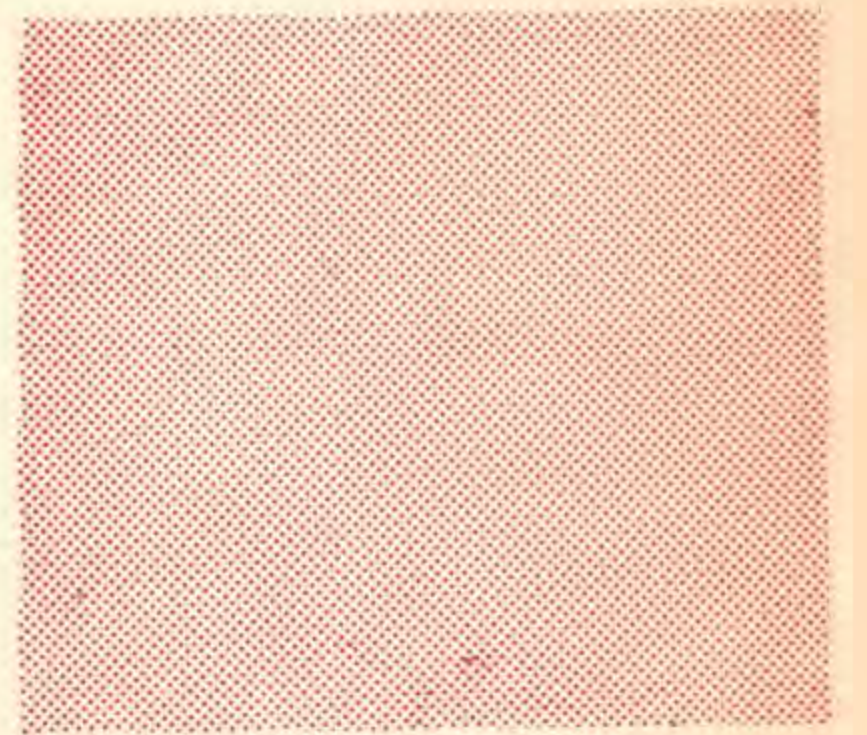


|                                |          |      |
|--------------------------------|----------|------|
| Championship Scratch           |          |      |
| 'A' Grade Handicap             | 27 Holes |      |
| 'B' "                          | " "      | 27 " |
| 'C' "                          | " "      | 27 " |
| 'A' "                          | " "      | 18 " |
| 'B' "                          | " "      | 18 " |
| 'C' "                          | " "      | 18 " |
| 'A' "                          | " "      | 9 "  |
| 'B' "                          | " "      | 9 "  |
| 'C' "                          | " "      | 9 "  |
| 'D' "                          | " "      | 18 " |
| 'D' "                          | " "      | 9 "  |
| 1st Calaway                    |          | 18 " |
| 2nd "                          |          | 18 " |
| Over 50                        |          | 18 " |
| Nearest Pin                    |          |      |
| McCull Shield for team of four |          |      |

|                   |          |      |
|-------------------|----------|------|
| ASSOCIATES        |          |      |
| 'A' Grade Scratch | 18 Holes |      |
| 'A' " H'cap       | 18 Holes |      |
| 'B' "             | " "      | 18 " |
| 'C' "             | " "      | 18 " |



McCull Shield winners (from left to right), Don Malpass, Paymaster; Frank Vogel, Pay Section; Doug Courtney, Claims Officer; Lindsay Matthews, Briquette Division.



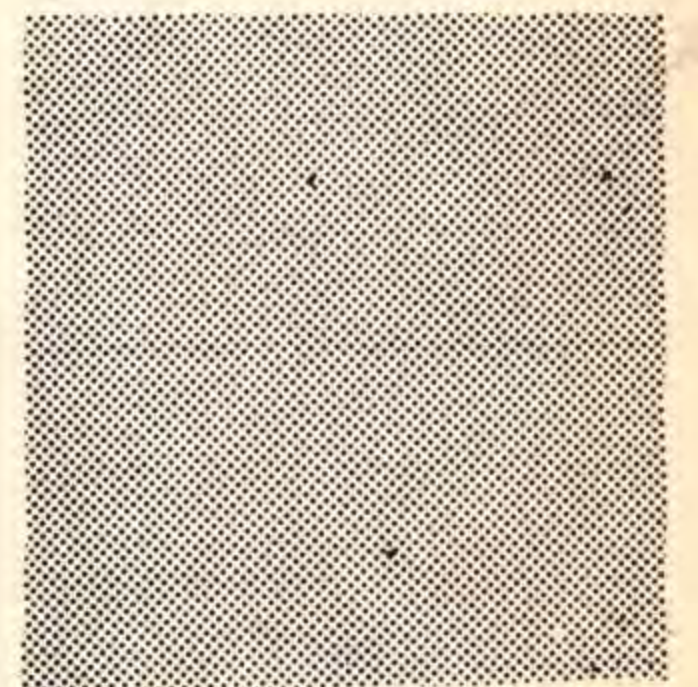
Who's won what? Examining the scores are, from left to right, Peter Tabart Jr., Jim Minster, Brian Cheshire, Tom McAllister, Dick Gough and Bob Purves.



|                |          |        |
|----------------|----------|--------|
| Bob Goldie     | 74 + 39  | - 113  |
| Jim Irving     | 68 + 35  | - 103  |
| Doug Courtney  | 67 + 33½ | - 100½ |
| L. Thompson    | 71 + 34  | - 105  |
| F. Lloyd       | 70       |        |
| Frank Hogan    | 66       |        |
| Lex Derham     | 67       |        |
| Noel Connelly  | 33½      |        |
| Frank Bryan    | 30½      |        |
| R. Nagle       | 32½      |        |
| Jack Dyer      | 73       |        |
| W. Philpott    | 38       |        |
| A. 'Gus' McNab | 73½      |        |
| Alf Govin      | 74       |        |
| Col Ferguson   | 67       |        |

(Doug Courtney, Frank Vogel, Don Malpass, Lindsay Matthews)

|                  |    |
|------------------|----|
| Mrs. L. Matthews | 85 |
| Mrs. L. Sneddon  | 76 |
| Mrs. M. Kesper   | 73 |
| Mrs. R. Goldie   | 72 |



The ladies were also well in evidence and here to prove it are (left to right) Jean Leek, Carmel Hancock, Lila Snedden and Betty Shaw.

# SURVEYORS TRIUMPH OVER ADVERSITY

OR,

Going Bush with Staff and Chain

A party to celebrate half a million manhours without a disabling injury was held by Survey

Section on Tuesday, October 13 at the West Mess, Yallourn.

Mr. Max Gray, Regional Services En-



Vic Cadwallader, Chief Surveyor, down from Melbourne for the occasion, brandishes the prize to be awarded the first surveyor to spoil the section's record.



Max Gray, Regional Services Engineer, Geoff Miles, The Venerable Bede, Herb Hill and John Neery with their hard-earned Award of Merit.

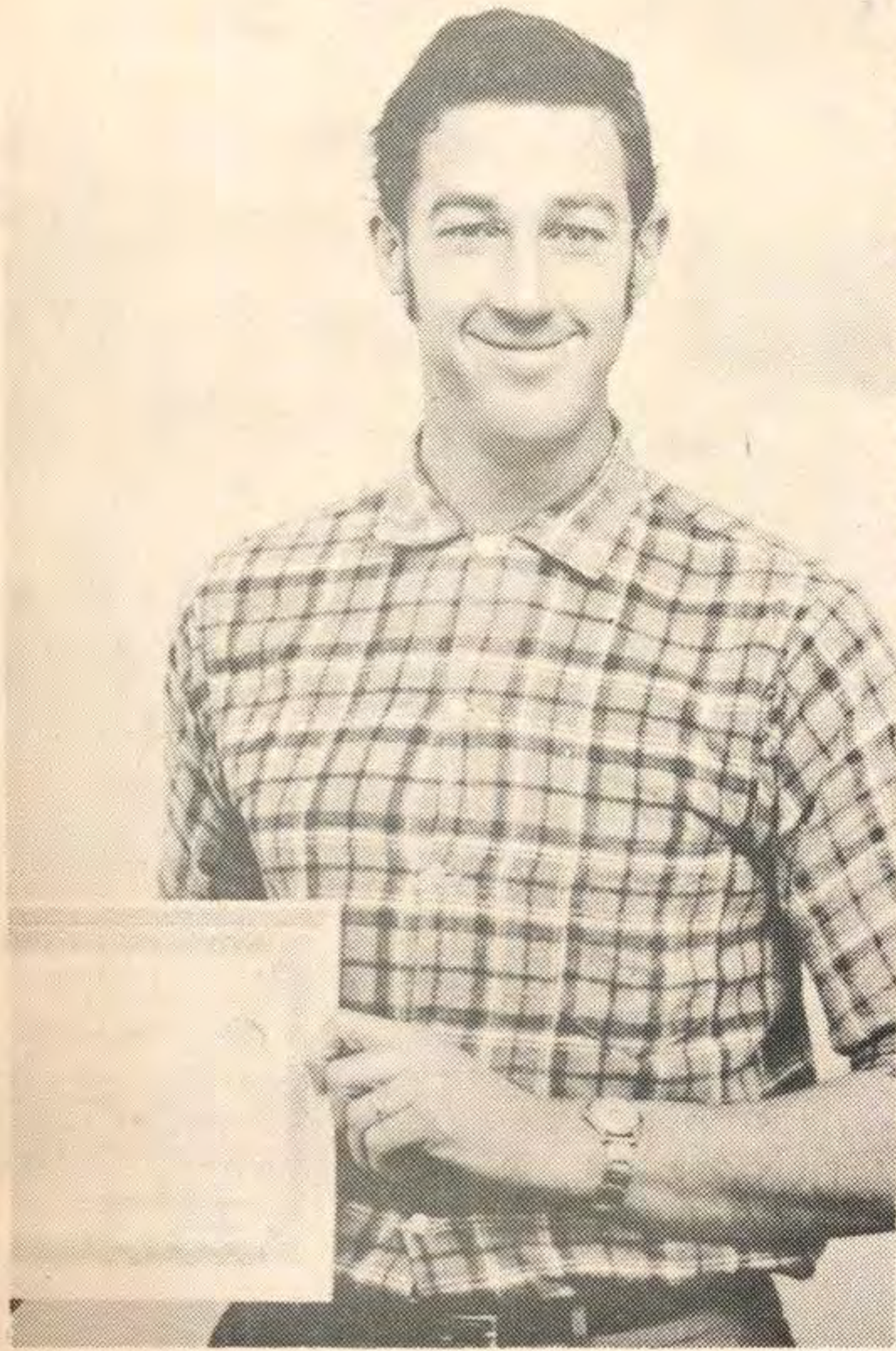
gineer, who shouted the party, praised the unsung heroes who manfully reported for work even though suffering from bee stings, redback spider bites, sunburn and that special hazard of surveyors - hangovers. He then presented the Section with the N.S.C.A. Award of Merit and some good advice on safety. He quoted, as an example of a positive attitude towards safety, the case of the girl delivery driver for a pantyhose manufacturer who was most impressed by a notice on the back of a mini-van - "If you can read this, you're too close".

When she returned to the factory she asked her boss if she could have some pantyhose made for her, incorporating this sensible slogan on the back of the waistband. Her boss thought the request a trifle unusual, but agreed to do it. "What size lettering do you want?" he asked. "I don't mind, as long as it's in Braille", the girl replied.

After this touching story, Vic Cadwallader, Chief Surveyor, down from Melbourne for the occasion, unveiled his secret weapon - a giant-sized dummy for the surveyor unlucky enough to mar the Section's safety record.

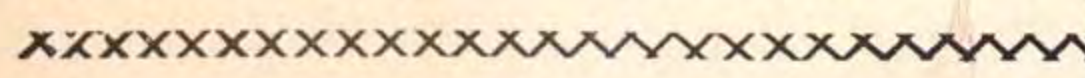
A mock broadcast involving a tape master-minded by Bede Gilmore and copious quantities of red wine, in which mention was made of surveyors sinking whilst the only sound boat was reserved for duck shooting expeditions and of quick and decisive action by someone called Wally, ended the official ? part of the proceedings.

# TURTLE CLUB AWARD



Ron Cox, Engineering Assistant, Plant Test Section, Yallourn, was presented with his Turtle Club membership certificate and wallet by the Manager, Mr. Bill Schulz on Monday, November 9.

Ron's safety helmet saved him from serious injury or death when, as he was ascending a stairway, a 1 lb. hammer fell 40 or 50 feet from overhead scaffolding and landed on his head.



## ANNUAL APPRENTICE DAY

The annual Apprentice Day will be held at the Regional Training Centre on Wednesday, December 9.

A display of work done by apprentices throughout the year will be open to general inspection on Thursday and Friday, December 10 and 11.

# THAT TOWER ON THE HILL

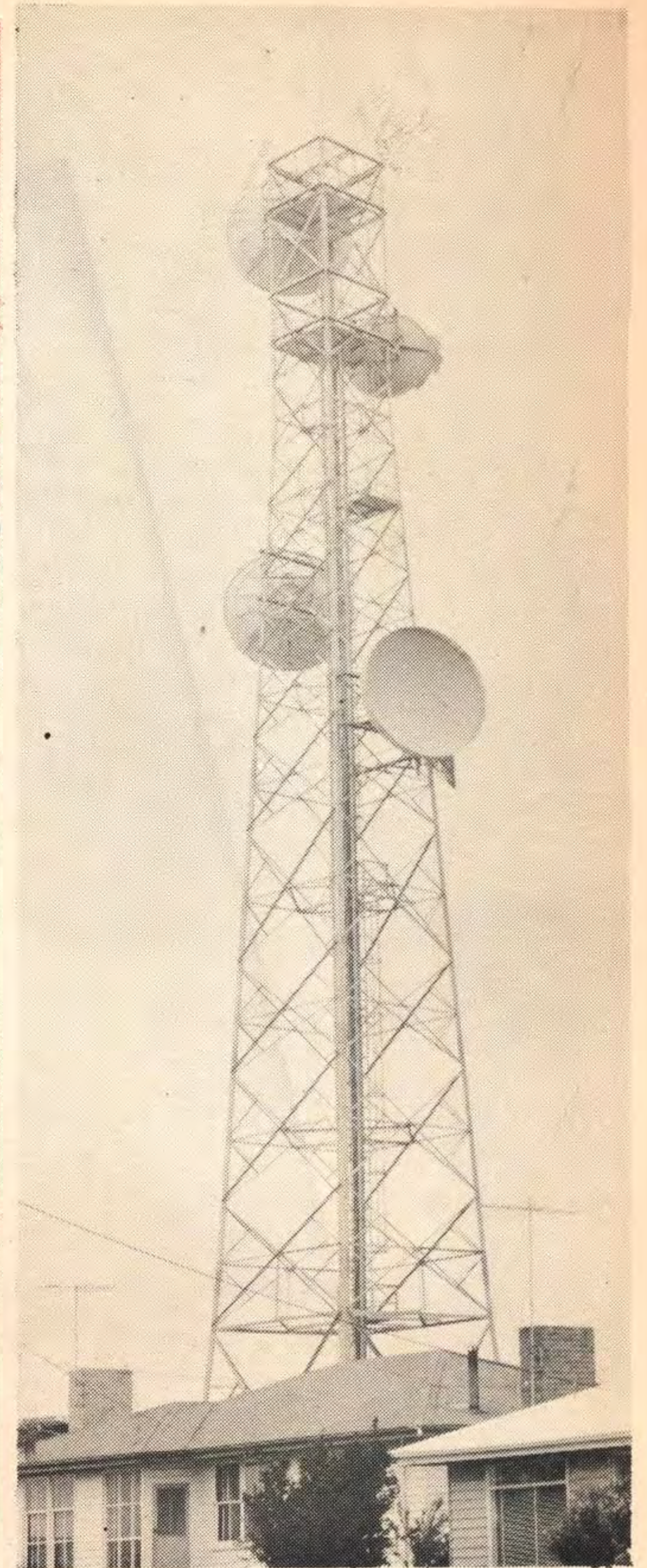
When steel towers are erected in the Morwell area they are normally interlinked by cables and we know that another transmission line is being constructed.

However, a stranger has appeared right in the centre of this power generating area; but it displays no insulator strings nor does it appear to be connected to anything. What is its use?

Well, if you have recently made a telephone call to Melbourne, Bairnsdale or other towns east of Morwell, or if you have watched television programmes from Channels 4 or 10, you have probably unknowingly made use of that tower and at least one of the dishes that it supports.

It is part of more than 200 "wideband" microwave terminal and repeater stations that the Postmaster General's Department has installed throughout Australia.

The heights and sizes of the dishes, which can be compared with headlight reflectors, depend upon the distance to the next repeater or terminal station and upon the wavelengths of the radio signals used.



The wavelengths are extremely short, ranging from about 3 inches to 1 inch; for purpose of comparison the wavelength of Channel 2 T.V. station is about 15 feet.

The very short wavelengths are used because these radio waves can be formed into very narrow and directional beams and, in general, the shorter the wavelength of the radio wave, the greater is the amount of information that can be transmitted.

The capabilities of the systems are indicated by the number of simultaneous telephone conversations that each can carry - 600, 960 etc., up to 2,700. One complete T.V. programme requires as much link capacity as do 960 simultaneous telephone conversations.

Requirements in the communication field have grown and now, as well as telephone channels, there is an increasing need for circuits for data transmission, telex networks and television channels. These requirements are being met by advances in technology and "That Tower on the Hill" plays an important part in this modern field by providing a vital link in the communication network of Gippsland.



Ken "Knocker" White, Dredger Operator and Ian Wilson, Coal Production Superintendent, Morwell, initiate Sir Rohan into the operating methods of No. 10 Dredge at Morwell Open Cut.



The Governor takes an interest in the work of Wayne Renwick, 1st Year Apprentice Fitter and Turner, at Yallourn Workshop.



The sky's the limit, Construction Engineer Phil Ashmead appears to be saying to the Governor and Dr. Connolly as they stand inside the cooling tower of Yallourn "W".



At Hazelwood Power Station the Governor was shown round by P.S.S. Don Clark and chatted with (L. to R.) Charlie Croydon, L/H Fitter; Tassie Lewis, Rigger; John Horvat, Crane Driver and Lou Matte, Fitter.

# GOVERNOR VISITS VALLEY

Sir Rohan Delacombe, Governor of Victoria, visited the Latrobe Valley Region as a guest of the Commission on Wednesday, October 28.

During his tour he inspected Hazelwood Power Station, Yallourn "W", Central Workshops, Yallourn and Morwell Open Cut.

Sir Rohan Delacombe relaxes after lunch at The Lodge, Yallourn, with Ron Wiggins, recently retired Paymaster, the Chairman, Dr W. H. Connolly and Mr. Bill Schulz, L.V. Region Manager.

Incidentally, Ron Wiggins (46 years), brothers Vic (44 years), Roy (31 years), Alex (42 years) and son Vern (27 years), have between them 190 years' service with the Commission.

Ernie Thompson, Asst. Apprentice Training Supervisor, holds a watching brief as the Governor chats with 1st Year Apprentice Fitters and Turners Joe Gatt and Ross Bertoli.







# "FIRST" FOR MORWELL BRIQUETTING FACTORY

Since safety records were first kept no operational group — as opposed to individual sections within groups — has managed to amass 250,000 manhours without disabling injury until Morwell Briquetting Factory achieved this feat

last month.

On Wednesday, October 21, Mr. Allan Crockett congratulated all personnel of the Briquetting Factory — both staff and wages — for making this outstanding achievement possible and urged every-

one to try for 500,000 manhours without a disabling injury.

In fact, the Morwell Briquetting Factory subsequently achieved this on November 12 and now the target is 750,000 man-hours. Keep your fingers crossed!

## Workshops work at safety

A Certificate and Pennant were awarded to Machine Shop, Central Workshops, Yallourn, on Thursday, October 29 for achieving 100,000 manhours without disabling injury.

Mr. George Davis, Workshops Engineer, said that the good safety record was a measure of capable and co-operative management. Mr Max Gray, Regional Services Engineer, then presented the Award of Merit and Tom McKay, Machine Shop Supervisor, thanked him on behalf of the men.

Safety awards will be made at a later date to the following individual sections (number of days without disabling injury follow in brackets): Shift 'A' (940), Shift 'B' (371), Shift 'C' (407), Shift 'D' (319), Tool Room (2,300), Light Machine (851), Heavy Machine (384).



## Morwell stores reach 3/4 million

Main Store, Morwell, were awarded the N.S.C.A. Award of Merit for achieving 3/4 million manhours without a disabling injury.

Mr. Max Gray, Regional Services Engineer, congratulating the section, said that the last disabling injury had occurred in April, 1966 and that the next milestone would be Christmas, 1970, when the one million manhour target should be reached.

# GETTING THE MOST FROM YOUR BRIQUETTE HEATER

To ensure that your briquette heater continues to operate efficiently, it is necessary for the unit to be cleaned at least once a year.

This is a very simple job and the small quantity of ash can be removed in only a few minutes. All you have to do is follow the procedures set out below.

A word of caution: Make sure the heater is cold before you start the cleaning.

## CRESTAIR

You will need: (a) a piece of heavy gauge wire (8 or 10 gauge) about 2'6" long; (b) a dust pan and brush or vacuum cleaner fitted with a hose; (c) a large screw driver or a spanner (See 3 below).

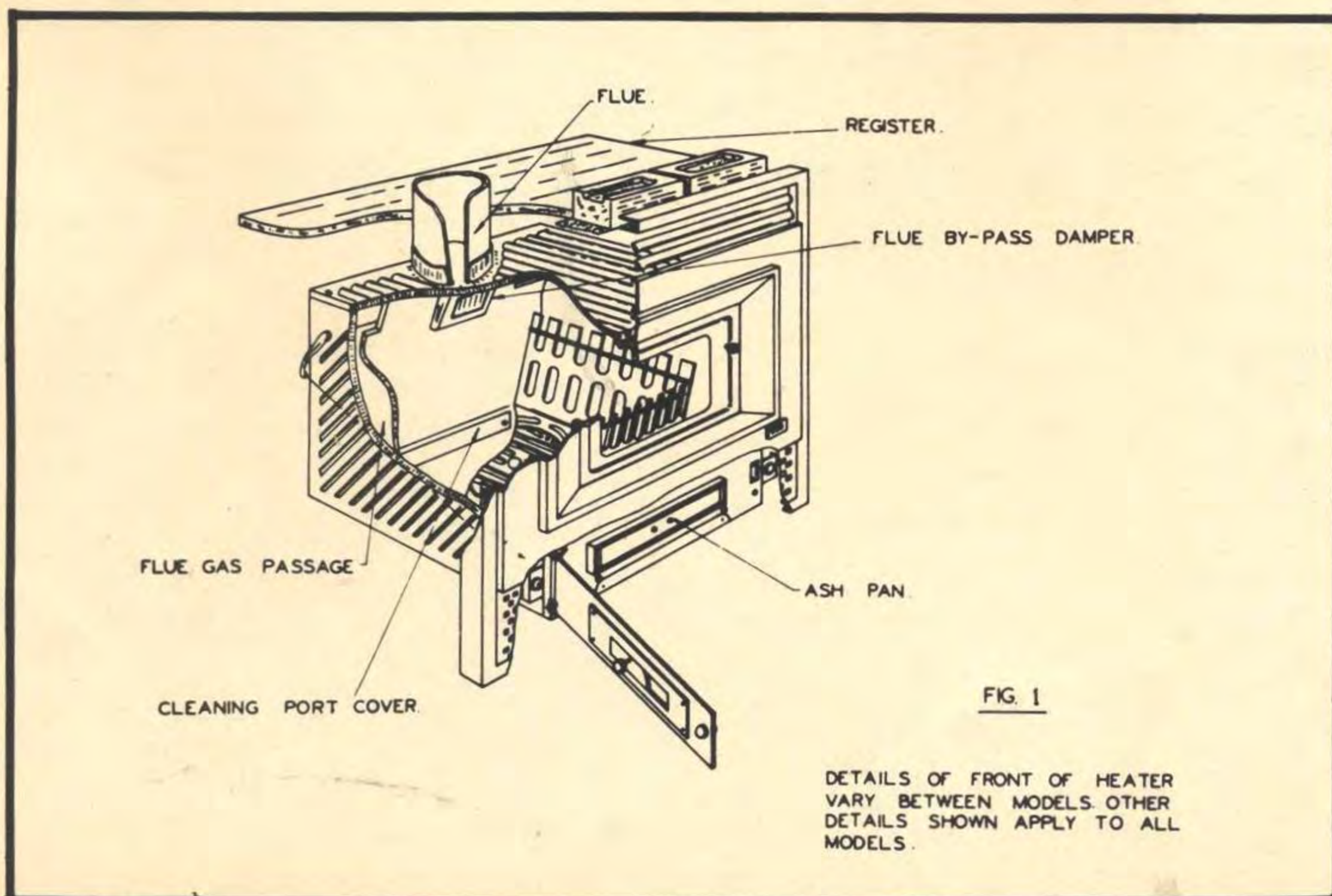
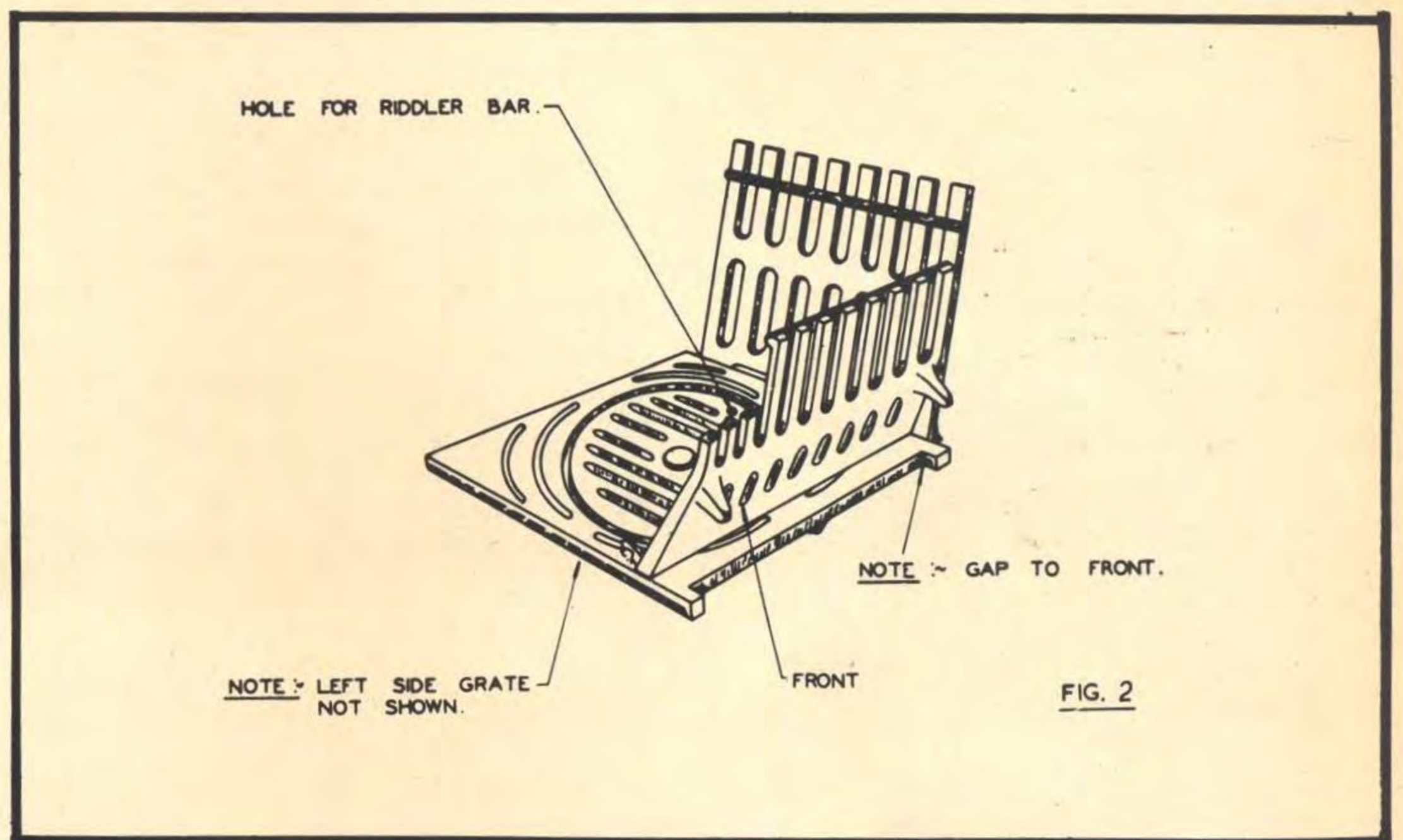
The cleaning should be performed in the following order:-

1. Remove the ash pan.
2. Lift out the grate assembly comprising the front grate, the two side grates, and the bottom moving and fixed grates, in that order.

3. Access is now available to the cover of the cleaning port which is situated on the back wall inside the ash pit and behind the normal position of the ash pan - see Figure 1. This cover is fastened to the heater body by either slotted or hexagon headed screws which must be removed with a suitable screw

driver or spanner. Use penetrating oil (Penetrene or similar) to loosen the screws if they are difficult to remove.

Remove the cover, taking care not to damage the asbestos gasket behind it. (If this gasket is damaged a new one must be fitted during re-assembly).



4. The cleaning port behind the cover forms the junction of three flue gas passes. The top openings of the two outer passes can be seen at each side of the bypass damper. The centre pass rises up the back of the heater behind the bypass damper and into the flue. The piece of heavy gauge wire should be agitated vigorously in each of these three passes and in the flue to ensure that they are completely cleared of ash and soot. Access to the flue is gained through the opened bypass damper. Clean the ash so loosened out of the heater.
5. Inspect the unit closely to check that everything is in good order. If not, contact the manufacturer or store from which your heater was purchased and arrange for them to do the necessary repairs.
6. Replace the cleaning port cover and its asbestos gasket and tighten the screws holding them in place.
7. Replace the grate assembly, taking care to assemble the various parts correctly as shown in Figure 2. Make sure that the riddler bar engages with the round hole in the moving grate.
8. Replace the ash pan.

# SUPER CONVAIR

1. You will need: (a) a piece of 1" x 1/2" wood about 18" long, or alternatively, a piece of steel 1" wide x 1/16" thick, about 18" long, bent over 2" from one end; and (b) a dustpan and a broom or vacuum cleaner fitted with hose.
2. The method of reaching the flue gas passages of the heater varies from model to model.
3. The various parts of the heater should be cleaned in the following manner.

(i) Flue - the bypass damper at the back of the firebox should be opened fully and the piece of wood or steel pushed up the flue and moved around to remove any deposits inside the flue.

(The flue is about 12" long). (ii) The bypass damper flap must close properly for the heater to work efficiently so any ash build-up on the damper and the metal that it closes against should be carefully removed. (iii) Scrape all ash from the side cleaning ports into the dustpan. Be sure to clean right to the back of the heater. Instead of scraping the ash with the wood or steel, a vacuum cleaner can be used to suck the ash out. (iv) Take out the ash pan and scrape out all ash from the area below the grate of the heater. Alternatively, the vacuum cleaner may be used to clean this area also.

(v) Inspect the heater closely to check that everything is in good order. If not, contact the manufacturer or the store from which your heater was purchased to get them to do the necessary repairs.

(vi) Replace the ash pan and, if applicable to your heater, the covers over the cleaning ports and the chrome front. Your heater is then ready to give its maximum output.

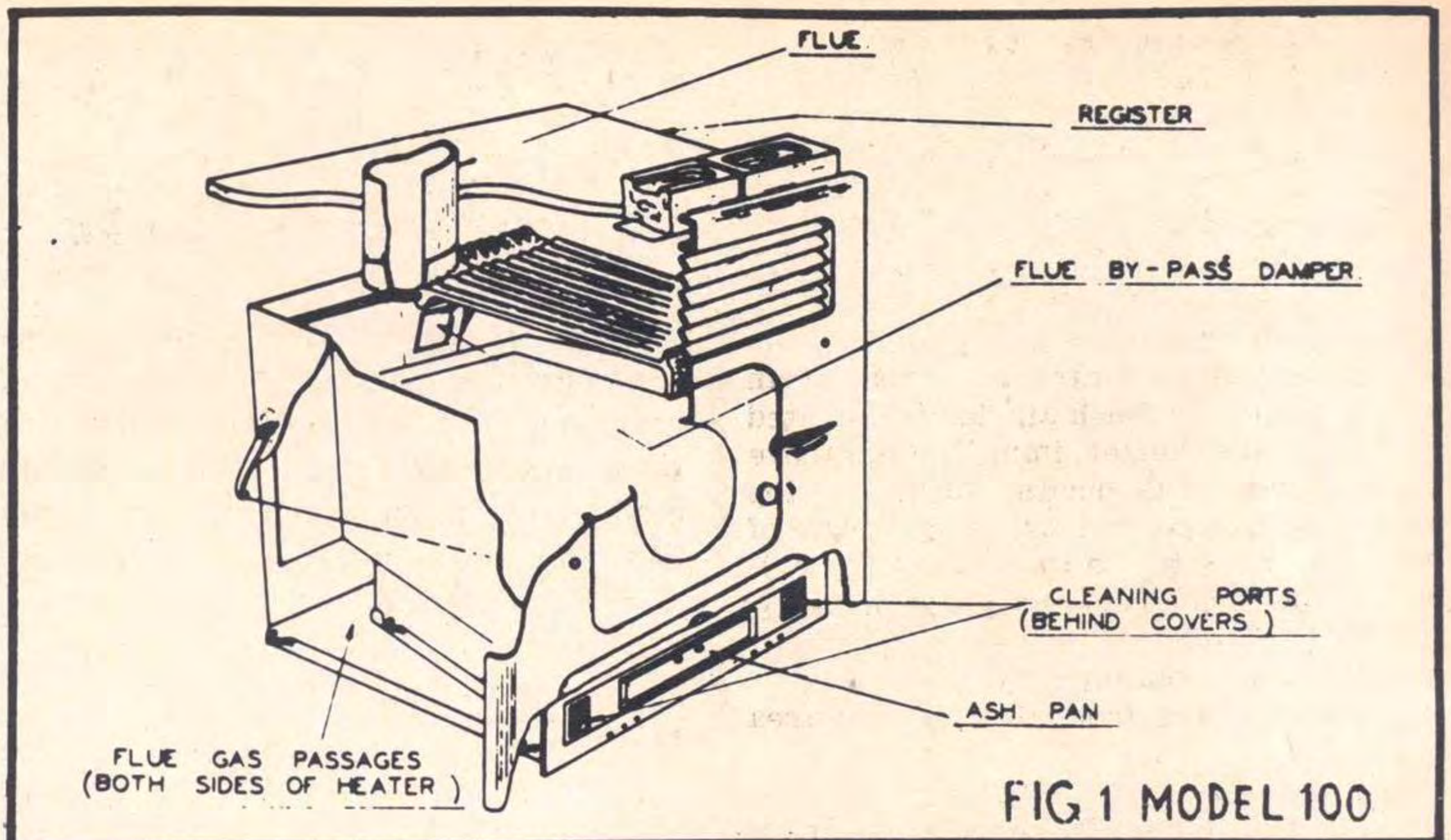


FIG 1 MODEL 100

Model 100 (Fig. 1)

- (a) Remove the ash pan cover.
- (b) Prise out both ends of the spring clips that hold the covers of the
- (c) cleaning ports. Remove the covers and the asbestos seals. Be careful not to damage the seals.

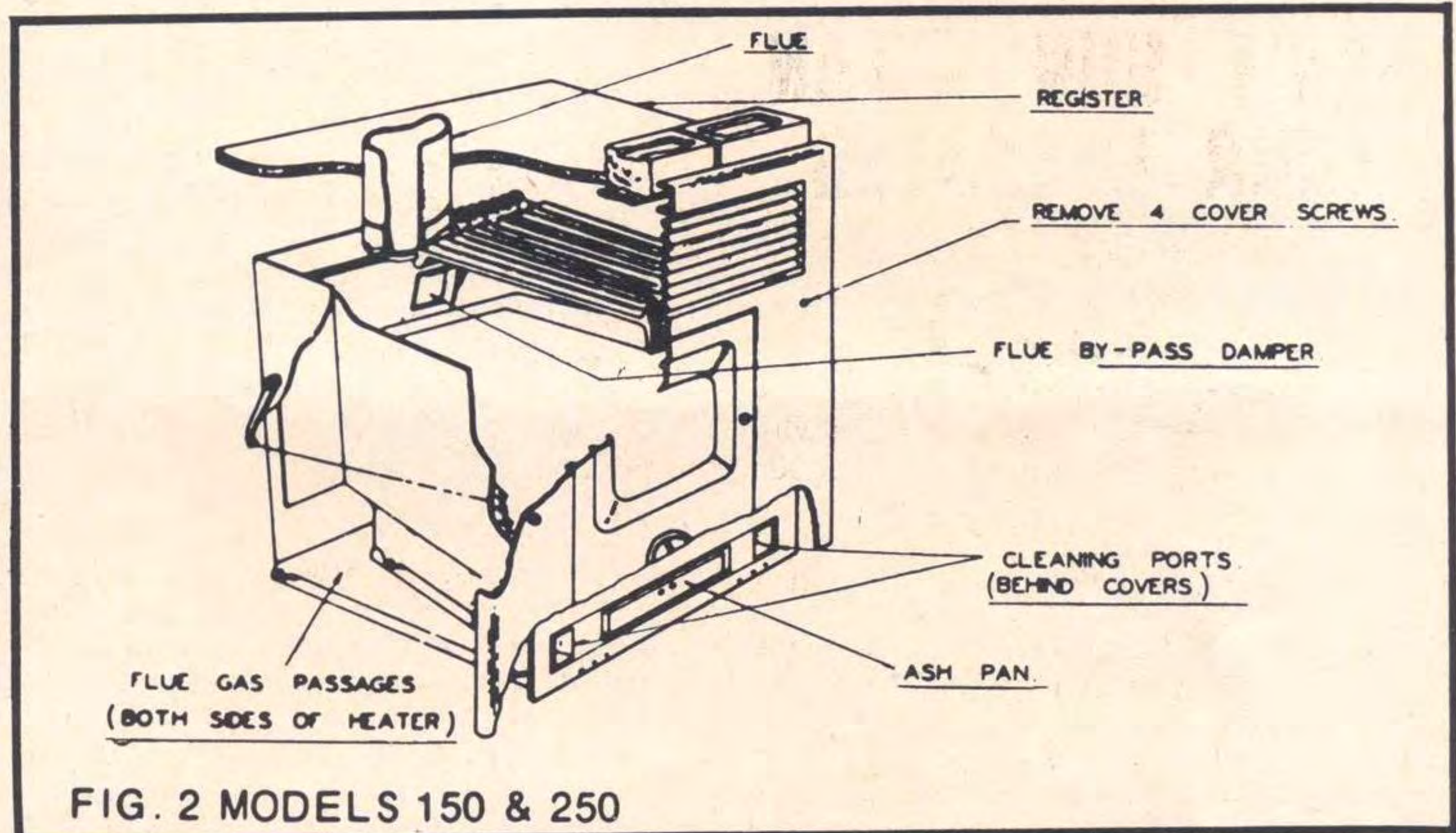


FIG. 2 MODELS 150 & 250

Models 150, 250 (Fig. 2)

- (a) Remove the four screws holding the chrome front of the heater and remove the front.
- (b) Prise out both ends of the spring clips that hold the covers of the cleaning ports.
- (c) Remove the covers and the asbestos seals. Be careful not to damage the asbestos seals.

Models 300 & 465 Starline (Fig. 3)

- (a) Remove fascia panel at base of heater.
- (b) Open ash pan door.
- (c) Cleaning ports are at each side of ash pan.

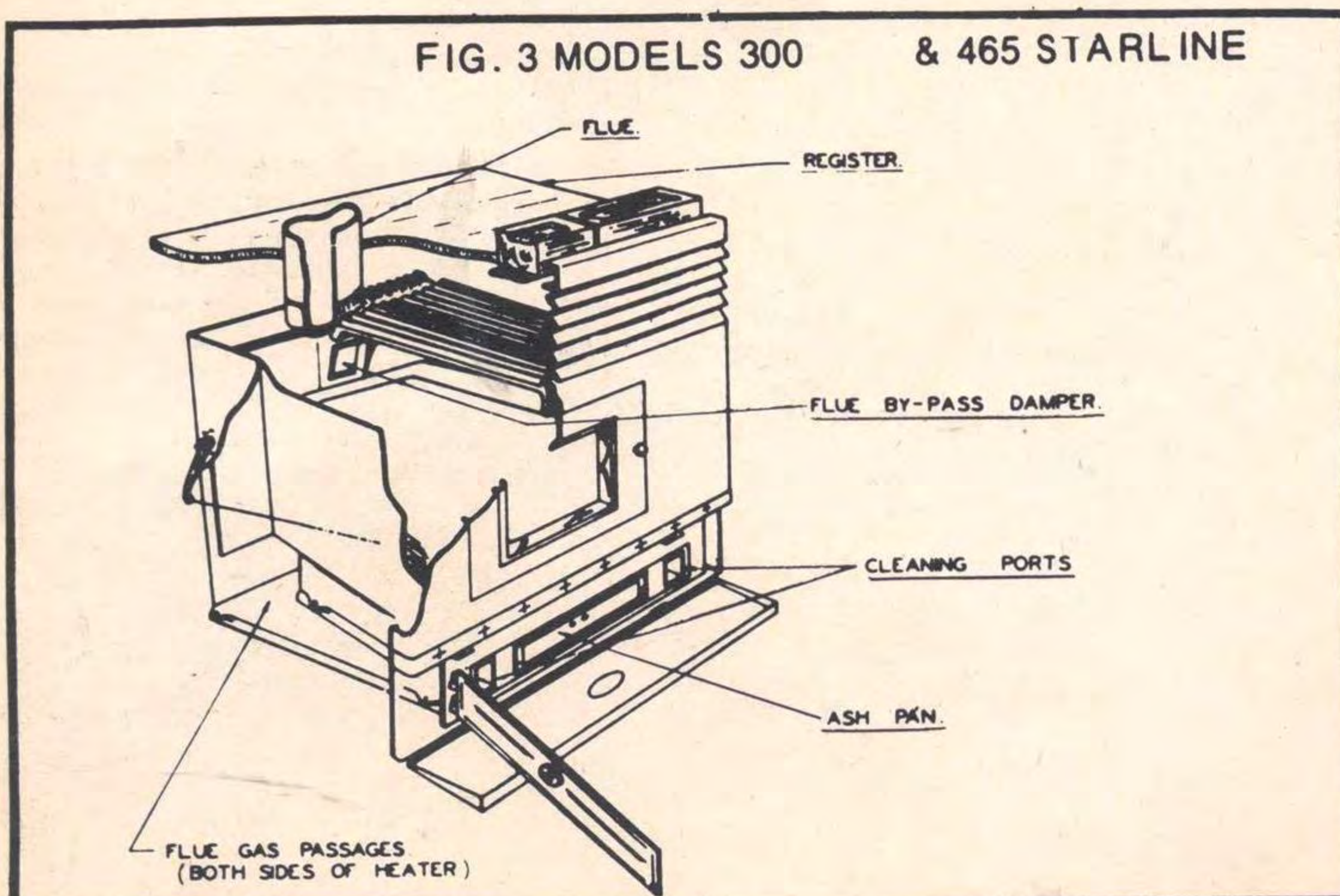


FIG. 3 MODELS 300 & 465 STARLINE

## WONDER HEAT

You will need: (a) a dust pan and brush or vacuum cleaner fitted with a hose; and (b) a 3 ft. length of 1/2" plastic garden hose or a circular brush attached to 3 ft. of wire.

1. Open the firebox door and using the plastic hose or circular brush clean the top of the fresh air duct(s) situated inside the heater immediately above the fire. (The duct(s) form the top of the firebox and are at an angle of 45 degrees to the back of the heater).
2. Remove ash from the sides of duct(s) and both sides of firebox.
3. Clean ash from the grate.
4. Clean all ash from the ash pan area below the grate.
5. Inspect the heater closely to check that everything is in good order. If not, contact the manufacturer or the store from which your heater was purchased to get them to do the necessary repairs.

Your heater is then ready for another year's first class service.

## DON'T SUN - TAN YOUR EYEBALLS

By BARRY ROSS  
Surveyor-in-Charge  
Yallourn

On Tuesday, October 13, the Latrobe Valley Survey Section was presented with Safety Awards on the completion of 500,000 manhours without a disabling injury.

About 10 days later this excellent record was almost spoiled because of a printing machine.

Some printing machines operate using a Mercury Printing Lamp to expose the image. These emit a quantity of Ultra Violet radiation. The close proximity dangers of this are very well known, but U.V. Lamps are clearly labelled with warnings about the effects of exposure on eyes and skin and the warning is more effective because of the unusual colour of the light. The mercury printing lamp packaging, however, does not stress this danger and the lamp looks like an ordinary fluorescent tube and produces a similar coloured light.

Normal operation of the machine presents little danger since the tube is effectively screened from the front, but on this particular occasion the end door had been opened for routine maintenance - a regular procedure that had been adopted with several light tubes over many years. With the new light tube fitted, the U.V. light was not screened out and, as a result of prolonged exposure, the operator received a flash or burn to both eyes. This is much the same as a welding or electrical flash and causes intense discomfort, similar to sand in the eyes some hours later.

In view of the various machines in the area and the number of sections who could be called to use or work on them, this is worth bearing in mind.

## YOU WOULDN'T DO IT - OR WOULD YOU?

by C.W. HARVEY  
Safety Engineer

There are some accidents which have happened since June. They are published here, not to heap derision or scorn on those concerned, but to highlight how easily injury may occur. These are people like you and me who paid a personal price for personal failings. It could happen to any of us if we are not careful to follow safety rules ALL the time.

### CASE 1

A temporary storeman issued a 50,000 rpm air grinder to a tradesman without a supervisor's authority, contrary to a notice on the grinder box. The tradesman inserted a 1 1/2" diameter grinding wheel in the grinder. Maximum safe speed of the wheel - 20,000 rpm.

After completing the grinding job, the tradesman was returning to turn off the main air supply to the grinder with the grinder still running, when the wheel burst.

Potential result could have been a fatality - the actual result was a compound fracture of the left little finger.

### CASE 2

A burn on the right ankle was caused by hot ash falling between shoe and sock. Not reported for six days. By then, infection had set in.

Result - a painful ankle and four days off work.



### CASE 3

A tradesman was reshaping a sledge hammer. He cut off the defective shaft and, contrary to normal practice, left about 2" protruding. He placed the hammer head wedge and up over a vice and, using

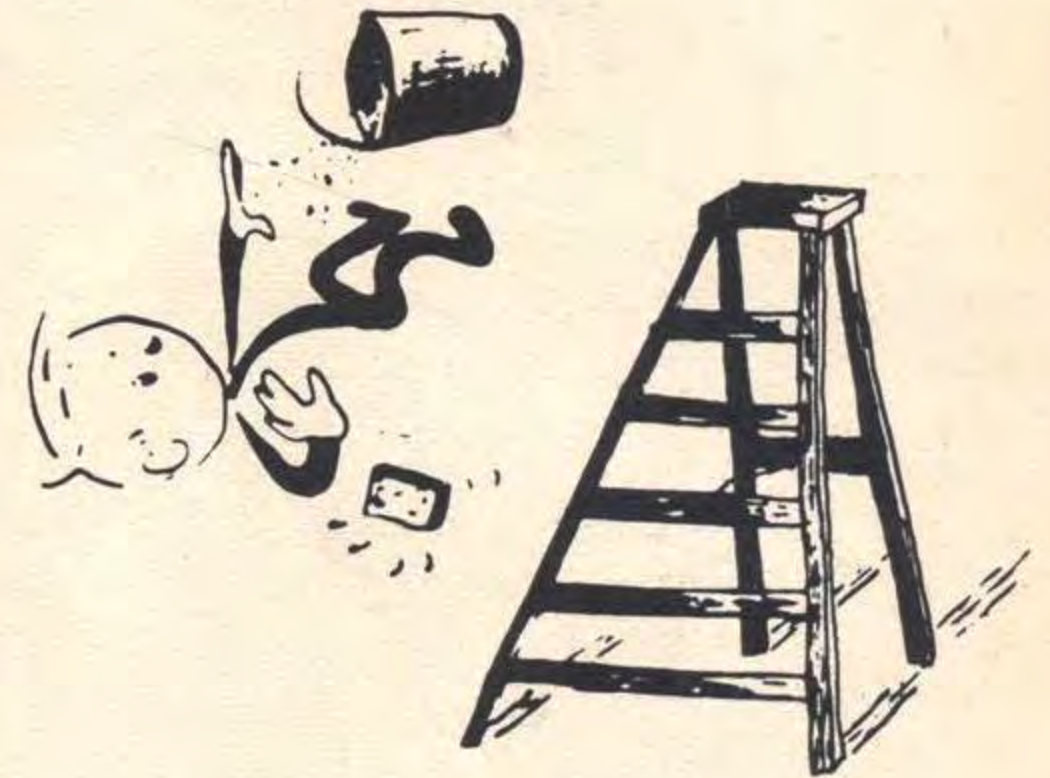
a 1/2" diameter bolt as a punch, attempted to drive the section of shaft from the head. He hammered vigorously and unsuccessfully, then struck his thumb and had to have 1 1/2 weeks off work.

The offending handle was subsequently sawn off flush and came out the reverse direction with the first blow of a hammer.

### CASE 4

A trades assistant on mechanical maintenance was cleaning up tools after completion of a job. He dropped a spanner and bent down to pick it up. When he straightened up he struck his head against a cable support. No safety helmet, result - concussion.

The victim had been instructed to wear his safety helmet at all times in these locations and had been issued with four helmets in eleven months.



### CASE 5

A painter placed his stepladder on a lino surface without fully extending the legs of the ladder. He climbed up and sat on top of the ladder and started to clean the wall.

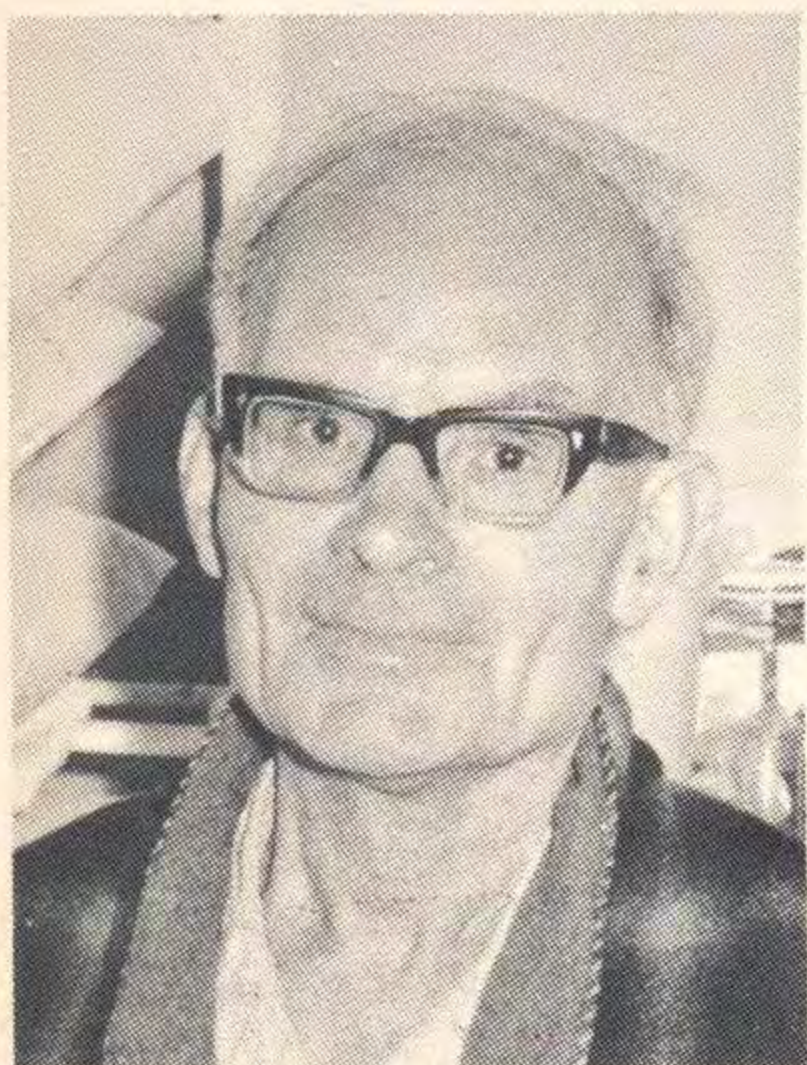
His weight and movement suddenly caused the legs of the ladder to extend fully on the smooth lino. The sudden movement unbalanced him. He fell backwards striking his head and injuring his back.

### REMEMBER

Nothing in the theory of probability is better established than the fact that a highly improbable event will finally happen if enough chances are taken.

It may happen the first time or the hundredth, but it will happen eventually. That much is certain. Why keep punting against a certainty? You can only lose.

# RETIREMENTS



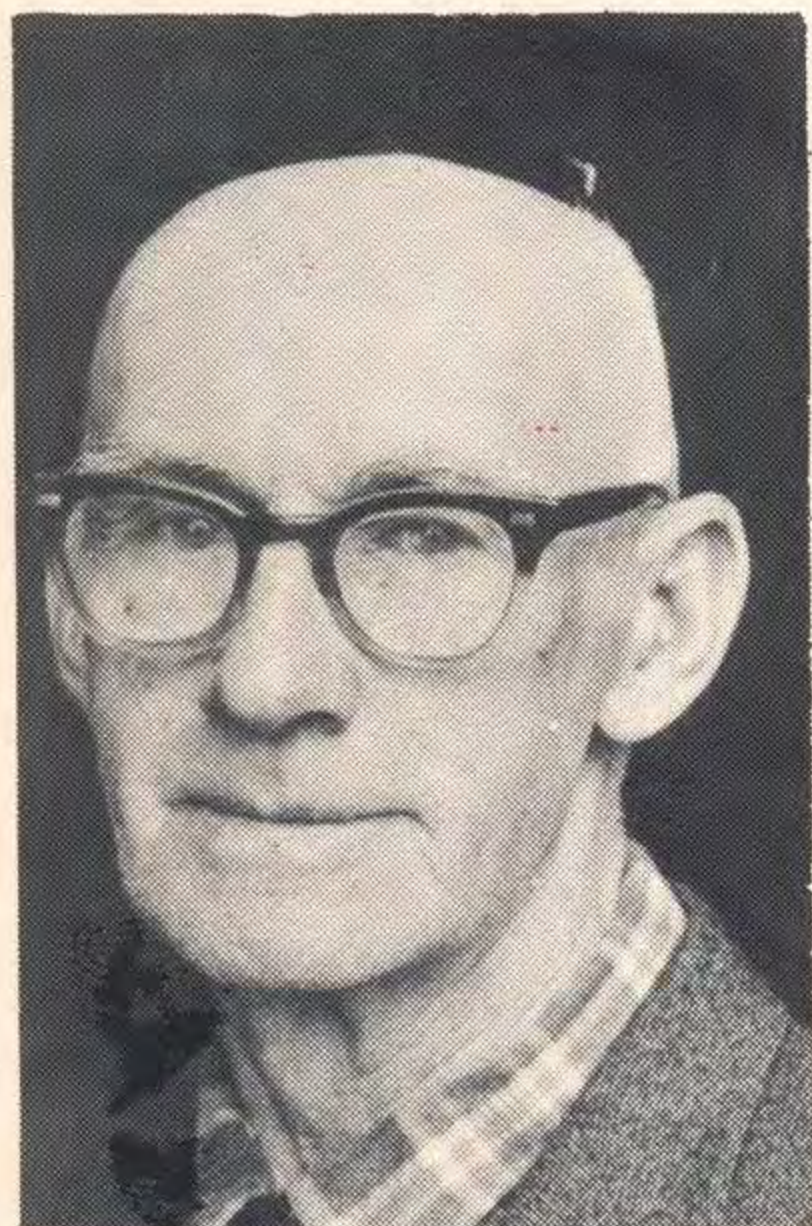
On October 12, Mr W. (Bill) Moule, retired after six years' service with the Commission. Bill's retirement was an early one caused by ill-health.

On his retirement he was a Trades Assistant in the Turbine Room of Yallourn Power Station.

During his service he played a prominent part in First Aid activities.

A number of his colleagues visited him in the Latrobe Valley Community Hospital and presented him with a combined clock and barometer.

\*\*\*\*\*



On Thursday, October 8, M.P. (Paddy) Stewart, Rigger, Central Workshops, Yallourn, retired after 22 years' service.

A large number of Paddy's colleagues were present to bid him farewell and to see Mr. George Davis, Workshops Engineer, present him with a set of fishing gear, blankets and a hand lantern.

Paddy is a man of many parts. He has been chauffeur to a Bishop, a drover, a carpenter, a wheelwright and a gold prospector. Adaptable, co-operative and well liked, Paddy will continue to live in Moe where he will devote time to "odd jobs around the house", to his garden, a game of bowls and fishing.

PAGE 14 - CONTACT



Ron Wiggins, Paymaster, retired on Friday, October 30, after 46 years' service with the Commission.

Ron started off in 1924 as a Timekeeper and served as Accounts Clerk, Merchandising Clerk in Electrical Showrooms and Clerk in the Yallourn General Store before his promotion to Paymaster in July, 1945.

Part of his responsibilities in those days was rent collection, which entailed Ron riding around Yallourn for two days on a pushbike, followed by a patrolman, also on a pushbike.

Although something like \$230 million has passed through his hands, Ron believes he has lost less than \$20 due to error!

In his retirement, Ron intends to travel extensively around Australia before returning to this area to pursue his two sporting loves, golf and bowls.

Ron was presented with a colour slide projector and a wrist watch and his wife, Amy, with a bouquet.

\*\*\*\*\*



Albie MacCallum, a Dredger Driver at Yallourn, retired last month after 30 years' service.

Albie, who has been dogged by ill health for a number of years, worked on dredgers in Yallourn Open Cut for over a quarter of a century.

A keen fisherman, Albie, who is a bachelor gay, intends to live in his cottage at Bairnsdale and indulge his hobby to the full.



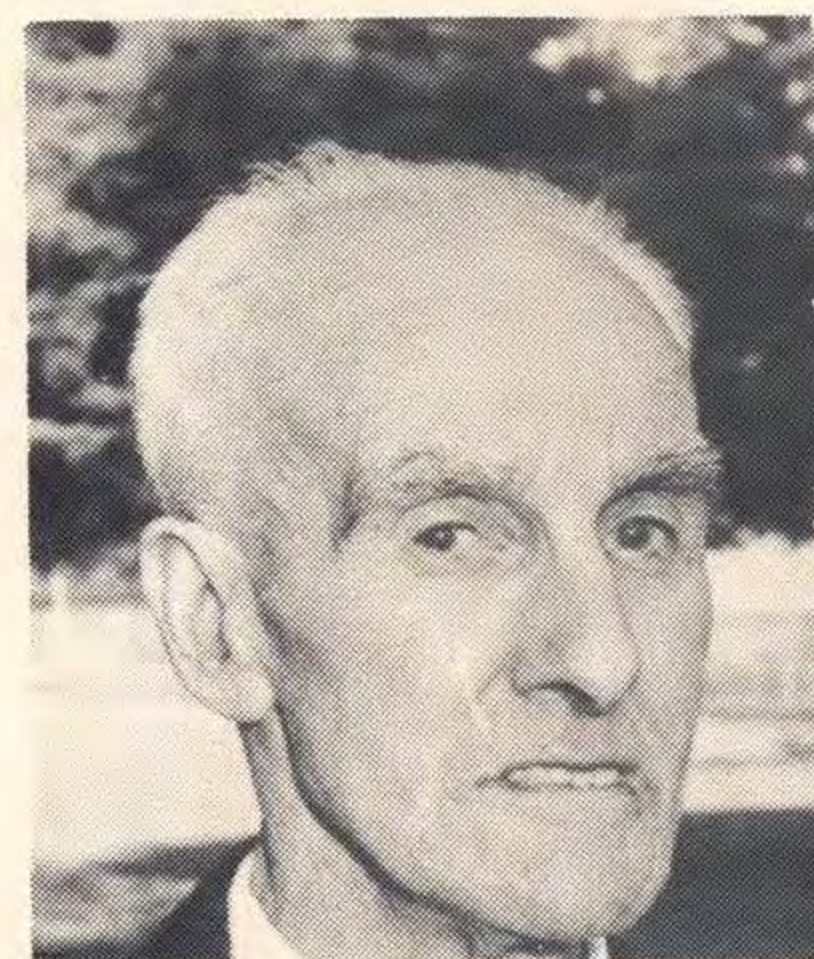
Harold Larkins, Leading Hand DB Loader Driver at Yallourn Open Cut, retired on Friday, November 13 after 33 years' service with the Commission.

Mr Eric Foote, Coal Production Superintendent, Yallourn, attributed much of Harold's fitness to the regular exercise he got by riding his bike to and from work.

Harold, who has been known to have a few bob on the horses from time to time, will spend his retirement with his brother at Caulfield and is having his stopwatch checked in readiness for timing the morning gallops.

Mr Ken Lamin, Chief Engineer Fuel, said all his workmates would miss Harold and presented him with a copper kettle for his wife and a travel rug to keep him warm at the racetrack.

\*\*\*\*\*



A crowd gathered at the Yallourn Bricquette Works to farewell Mr. C. J. (Charlie) Crooks who retired on November 3.

Charlie, who was a Trades Assistant with Electrical Operations Section, had 32 years' service with the Commission.

Mr. J. Thorpe, Electrical Operations Superintendent and Mr. E. Bell, Bricquette Production Superintendent, presented Charlie with a fishing reel, electric razor and a cheque from the welfare club.

Charlie and Mrs. Crooks will live at Lakes Entrance where he hopes to do a lot of fishing.

# ANOTHER WISE OWL



Peter Vasic, a Welder in Mechanical Maintenance Section at Hazelwood Power Station, was trimming a piece of mild steel on a heavy duty pedestal grinder on July 10.

He held the steel with a pair of tongs and used a piece of 1" diameter pipe as a pressure medium, whilst grinding. Peter felt the grinding wheel grab at the piece of material and pulled his head back to see what had happened. At that instant he was struck on the right lens of his safety spectacles by a flying fragment.

The right lens of his spectacles was completely shattered, but remained intact in the frame.

This month, Peter became a member of the Wise Owl Club of Australia, when Mr. Bill Schulz, Manager, Latrobe Valley Region, presented him with his Wise Owl badge, tiepin and certificate.

Here his mates Noel Kingsley and Stuart Hill examine the lens that saved Peter's eye.

## FOR SALE OR LEASE

A small weatherboard house, 2 bedrooms, lounge and kitchen. Briquette H.W.S., Convair with fan in lounge. Situated near schools and shops and within easy reach of Shift Bus at Newborough. Call at 5 Torres Street, Newborough any time.

## Engagement



Brenda Finlay, Typist at Administration, Yallourn, to Greg Mitchell, Coal Production, Yallourn - at present doing National Service.

## CONTRIBUTORS WANTED

Commission personnel in the Valley are invited to contribute any news items they think may be of interest to fellow employees to Derek Johns, Public Liaison Office, Morwell, Extension 3170.

# SUGGESTION AWARDS - 1970

## LATROBE VALLEY REGION

## MONTHLY FEATURE

|                        | Power |       | Briquette |      | Coal |      | Services |      | Transmission |      | Administration |      | Accounting |      | Personnel |     | Totals |       |
|------------------------|-------|-------|-----------|------|------|------|----------|------|--------------|------|----------------|------|------------|------|-----------|-----|--------|-------|
|                        | No.   | \$    | No.       | \$   | No.  | \$   | No.      | \$   | No.          | \$   | No.            | \$   | No.        | \$   | No.       | \$  | No.    | \$    |
| January                | 16    | 167   |           |      | 2    | 26   | 4        | 54   | 2            | 115  | 3              | 68   |            |      |           |     | 27     | 430   |
| February               | 11    | 195   | 3         | 38   | 2    | 20   | 8        | 102  | 2            | 14   |                |      |            |      | 1         | 10  | 27     | 379   |
| March                  | 9     | 130   |           |      |      |      | 3        | 68   | 1            | 50   |                |      |            |      | 1         | 8   | 14     | 256   |
| April                  | 3     | 110   | 1         | 8    | 5    | 88   | 3        | 36   | 4            | 37   |                |      |            |      |           |     | 16     | 279   |
| May                    | 14    | 280   | 6         | 228  | 1    | 8    | 4        | 63   | 4            | 128  |                |      | 1          | 10   |           |     | 30     | 717   |
| June                   | 9     | 197   |           |      | 6    | 64   | 5        | 40   | 2            | 23   | 3              | 30   | 1          | 25   |           |     | 26     | 379   |
| July                   | 8     | 123   |           |      | 11   | 127  | 3        | 31   | 3            | 65   | 2              | 23   | 1          | 8    |           |     | 28     | 375   |
| August                 | 29    | 469   |           |      | 4    | 60   | 11       | 130  | 4            | 60   | 2              | 16   |            |      |           |     | 50     | 735   |
| September              | 5     | 190   | 1         | 8    | 1    | 332  | 6        | 231  | 1            | 8    |                |      |            |      |           |     | 14     | 759   |
| October                | 9     | 166   |           |      | 1    | 25   | 3        | 43   | 1            | 8    |                |      |            |      | 4         | 30  | 18     | 272   |
| Totals                 | 113   | 2,017 | 11        | 282  | 33   | 750  | 50       | 798  | 24           | 508  | 10             | 137  | 3          | 43   | 6         | 48  | 250    | 4,583 |
| Approx. Average Awards |       | \$18  |           | \$26 |      | \$23 |          | \$16 |              | \$21 |                | \$14 |            | \$14 |           | \$8 |        | \$18  |

# CONTACT

Recall that last June this column made mention of two cups "gathering dust" as the glory of yester-year? These are held by the Main Stores at Yallourn. I was told a little later that there was also a shield. A word here and there - even suggested that someone may have been "shield snitching", but no, it had rested over the years at the Construction Depot, the last Section to win it in 1952.

Here is the shield pictured in all its former glory with Jack Blythe of Municipal, who organised its restoration. There are four inscriptions: 1948 - Briquette Welfare Club, 24 1/2 points; 1949 - Main Store, 16 points; 1950 - Main Store, 13 points; and 1952 - Yallourn General Services. There are five blanks. On a handsome oak background the crest reads - "Presented by State Electricity Commission, 1948, for Annual Competition".

\*\*\*\*\*

Brings me to a point - some 25 years ago there were around Yallourn some men of energy and foresight - people who knew the joy of friendly rivalry and competition. Men like J. Benjamin; S. Jolliffe; J. Manners; A. Rickman; E. Webster; V. Gore; W. Mussard; M. Arnel; J. Driscoll; E. Brown and J. Fields. I'm told that these were the driving force of the competition and many other activities around the local scene. Some are still on the job, some retired, whilst others have "passed on". Construction, I believe, will put the shield up for competition, but we need men today like those I mentioned above. Have we got them?

\*\*\*\*\*

If you are still reading and have a habit of boasting how good YOUR shop or section is - well, here's your opportunity to prove it. Challenge.

\*\*\*\*\*

Speaking of challenges - here's a confident one! Brian Ryan, Mechanical Engineer and Peter Rich of the Clerical Section at Hazelwood Power Station claim they are the best five hundred players in the Valley - so confident are they that they are issuing a challenge to play anyone, any time at any place. I think you can bring your own cards - or do they toss for cards in this game?

\*\*\*\*\*

Denis Scambler reports that Jan Rudi's Kangas won the final of series six in the Transport Workshops carpet bowls contest from the Panthers. Jan was assisted to victory by Jim Lowe, Keith Craven and Frank Cooke - whilst Denis with Ian Houston, John Peaty and Tommy Watson tasted the bitter ashes of defeat. The doubles championship is in progress at

the moment and the winners should be known next week. Perhaps these workshops enthusiasts do stop for Christmas.

Main Stores battington competition's in recess for the summer. Barry Warner, Stores enthusiast for the game says season very successful, although the only challenge came from Morwell - and it's hard to get over and back in the three 'quarter hour dinner break and play a game. Perhaps we could make battington an amenity - eh, Super'?

Best for season were Tim Harris and Terry Birch, whilst the 17 year-old Trevor Jones is considered best first-year player.

\*\*\*\*\*

Down near Drawing Office t'other day and saw orange left on doorstep. Understand that there's a keen cricket match there each day. Must have been a real class one for a bloke to do an orange like that.

## carter's column

