

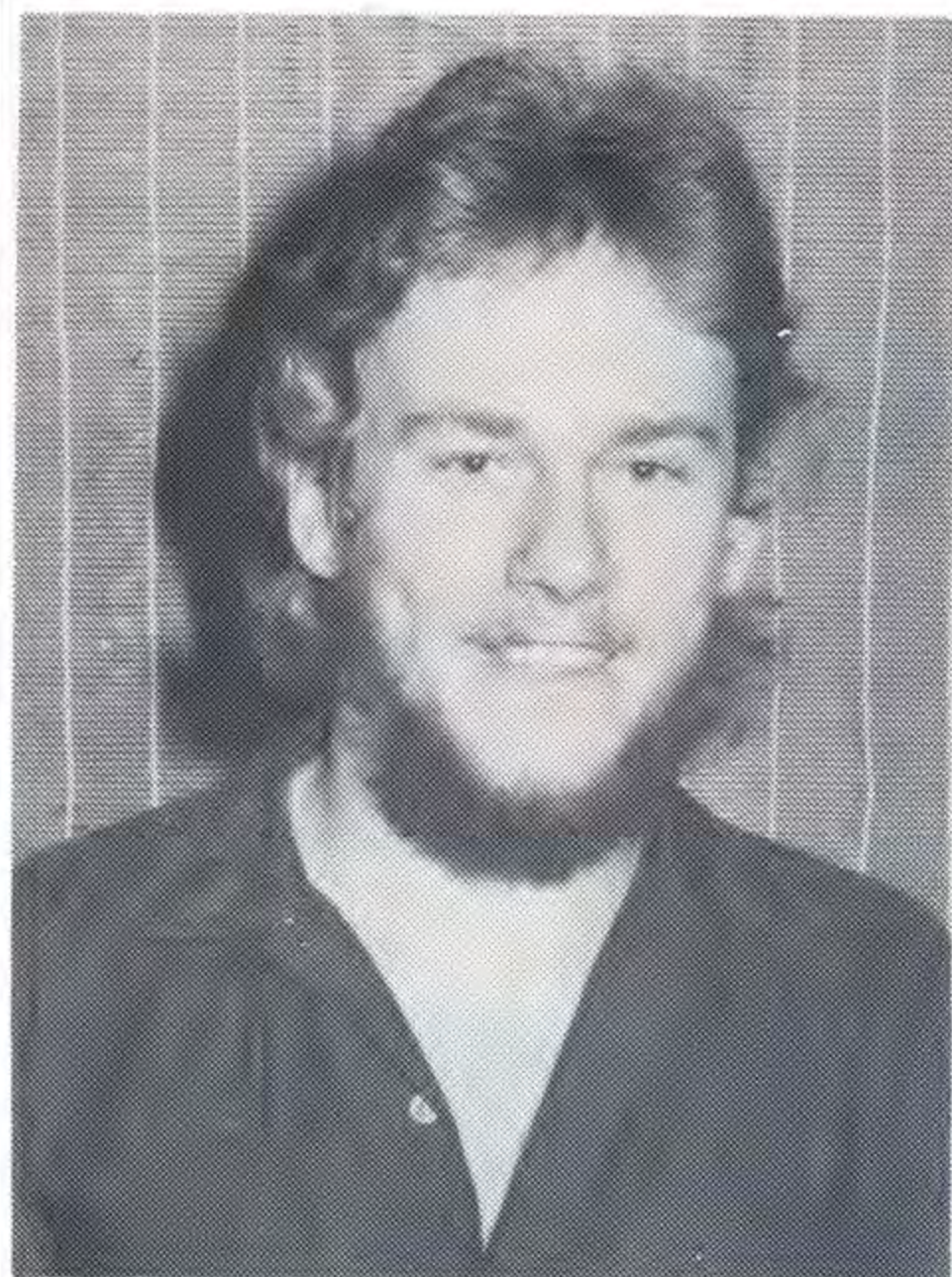
*Shorey*



# CONTACT

JULY, 1980





## Neil takes apprentice top award

Neil Krutop of Traralgon is Victoria's top moulding apprentice. Based in the Yallourn Workshops, Neil won the coveted Beasley Foundation prize sponsored by the Institute of British Foundrymen (Australian Branch) ahead of a number of other Victorian apprentices.

Unfortunately Neil was ill and unable to attend the presentation evening. The award for non-ferrous moulding was made to SEC Apprenticeship Officer Peter Gracey accepted the award for non-ferrous moulding at the Royal Melbourne Institute of Technology on Neil's behalf.

Neil is the second SEC apprentice to win the award, the other winner being Chris Elloy of Morwell.



The second phase of the medical surveillance associated with the Operations Group asbestos screening program, involving lung health testing, is about to begin in the Latrobe Valley.

The medical surveillance is under the direction of Dr. Margaret Smith, head of the Alfred Hospital Lung Function Unit.

An additional medical officer has been appointed to assist with the program and \$50 000 worth of new equipment has been purchased to enable a greater testing capacity. Up to 2000 employees are expected to be examined annually.

Pulmonary function tests and medical examinations of some 800 Yallourn Works area employees who responded to a questionnaire and who have already been x-rayed will begin during August. Tests will take place in the first aid offices near the new Yallourn raw coal bunker.

Acting Asbestos Task Force Chairman Jim Carlisle said the testing program had been completed at Newport Power Station. "Employees

*Scientific Officer Vicki Statton explains some of the lung function testing equipment to Asbestos Task Force member George Wragg.*

who have been tested have commented favorably on the surveillance program.

"People have appreciated the opportunity to discuss the results of their tests with Ross Lazarus, our Medical Officer. Test results are made available to employees' own doctors if required. In several cases, tests have diagnosed conditions not related to exposure to asbestos, and as a result employees have been able to arrange follow-up consultations with their own doctors."

The surveillance program will start at Yallourn and then continue at Morwell and Hazelwood later this year.

To date 2000 employees within the Latrobe Valley out of a workforce of 8000 have responded to the questionnaire. Employees who have not as yet responded to the questionnaire can do so through their local Occupational Health Centre.

## Contact



Prepared by  
the L.V. Public  
Relations Group  
for Operations Group  
employees.

### Cover

*A bevy of beauties, SEC second year gardening apprentice Heather Causon (right) pictured with Traralgon High School students Jean Youdan (left) and Jenni Cave (centre) at the annual SEC Career Exhibition in the Morwell Town Hall.*

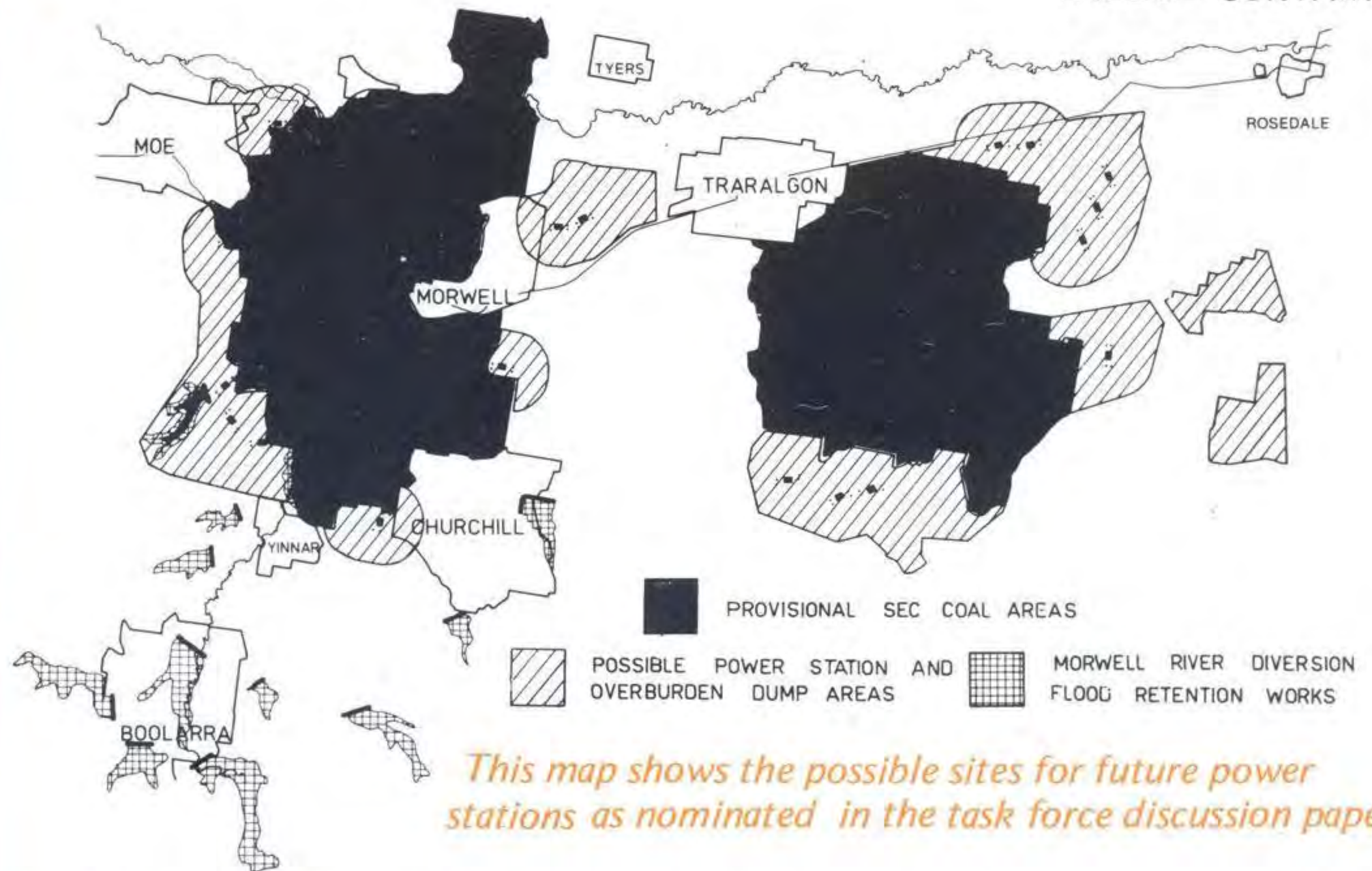
### Inside

Task force report . . . . .	3
Area Administration . . . . .	5
Coal Production . . . . .	6
Engineering Services . . . . .	7
Graduation . . . . .	8-9
Power Generation . . . . .	10
Transmission Operations . . . . .	11
Retirements . . . . .	15

The Commission is to investigate a development of the Narracan coal field, south-west of Morwell, as one of a number of alternatives for a new major power project to follow Loy Yang, to begin operation in early 1990s.

As part of the study, the Commission is examining in detail a two-power station complex, similar in size to Loy Yang, based on a new Narracan open cut south-west of Morwell. Each station would consist of four units of 500 megawatts, or larger.

The Commission will be consulting with a wide range of State Agencies and other interested bodies over the next few months with a view to presenting an interim report to Government later this year seeking reference to a Parliamentary Public Works Committee inquiry next year.



# Task force report- starting point for future planning

A Commission task force set up in February to look at the long-range development of the Latrobe Valley has nominated possible sites for 21 future power stations.

In a discussion paper prepared for the Latrobe Valley Ministerial Council and Consultative Committee, the task force has given an outline of a strategic plan for the future use of SEC designated brown coal in the Latrobe Valley.

Assistant General Manager (Development) Jack Johnson said the discussion paper presented a conceptual plan which should in no way be seen as a definite statement on the extension of the Commission's generating system.

Power station sites indicated in the plan were tentative only and subject to discussion with the shires concerned. However, it did give an indication of the possible scale and location of Commission developments over the next 50 years or so, he said.

## INFORMATION

An information program explaining the task force discussion paper is planned through Latrobe Valley works areas.

Copies of the task force report and maps of areas referred to have been provided for public display by Latrobe Valley municipalities and the Town and Country Planning Board.

The 21 notional power station sites nominated in the paper are based on two main coal areas — in the west the Yallourn-Morwell area, and in the east the Loy Yang-Flynn area.

Possible open cuts on the Yallourn-Morwell field area —

- Narracan, west of the Morwell open cut, 1020 megatonnes, 4500

MW (2 power stations). Development of the field would depend upon diversion of the Morwell River.

- Maryvale, north of Morwell township, 1900 megatonnes, supporting some 7000 MW of power generation plant (3 to 4 stations). Development of the field would also depend upon diversion of the Morwell River.
- Corridor, west of Morwell township, 1460 megatonnes, 6000 MW (2 to 3 power stations). Development of this field would require relocation of the Princes Highway and the Gippsland railway line, as well as diversion of the Morwell River.
- Morwell 2, a second seam underlying a large part of the Morwell (1) seam, 600 megatonnes, 2800 MW (1 power station).
- Hazelwood cooling pond, mainly underneath the cooling pond, 800 megatonnes, 3300 MW (2 power stations).

Possible open cuts on the Loy Yang-Flynn field are —

- Loy Yang extension, a northward extension of the present Loy Yang open cut, 880 megatonnes, 3700 MW (1 power station).
- Flynn No. 1, the southern most of the two open cuts east of the Loy Yang open cut, 1200 megatonnes, 4900 MW (2 power stations).
- Flynn No. 2, north of Flynn No. 1,

about three times the size of the

- Loy Yang open cut, 3100 megatonnes, 12 000 MW (5 power stations).
- Flynn's Creek, south-west of Flynn No. 1, 590 megatonnes, 2400 MW (1 power station). This would require diversion of Flynn's Creek.
- Fernbank, southernmost open cut for the Loy Yang-Flynn coal field, 580 megatonnes, 2500 MW (1 power station). Complete development of this open cut would also require diversion of Flynn's Creek.

## PROTECTION

Development of the 21 notional sites would require protection of some 20 000 ha of land outside the SEC coal areas for such works as power stations, overburden and ash disposal and buffer zones. Buffer zones would exclude residential development but could include industrial development and allow landscaping to enhance the areas.

Most of the land which would be required to be protected, apart from 4000 ha associated with diversion of the Morwell River and other works, is immediately adjacent to the SEC coal areas.

Where possible, sites nominated are in areas zoned agricultural, forestry and SEC industrial in order to minimise the effect of possible new power station developments on local communities.

# W/shop teams clash

Undeterred by poor weather, two teams from Yallourn workshops turned out for a social footy match. The game marked the first after hours social event workshops employees have enjoyed for a long time. But the day was voted such a success that the workshops have thrown out a challenge to all comers for a repeat performance.

In the line up for Bays 5 and 6 were Lee Eason; Phil Backman; Brian Plant; Mick Hancock; Wally Ogradowski; Graham Wilson; Eddy Surowka; Gary Benson; Ray Linton; Ray Lovison; Sam Vella; Andy Kaczkowski; Wayne Mills; Tony Dawson; Rene Krausz; John Cardona; Rob Stevenson and Bruce Dickason.

Their opponents from Bays 7 and 8 included; Eddy Mecekas; Roger Sagar; Ron Vella; John Shankland; Theo Brereton; Tony Borg; Mick Bloye; Daryl Lewis; Robbie Johns; Ernie Sultana; P. Panipucci; Keith Byrne; Bill Owen; John Burkett; Tony Flintrop; David Kingwell and Gary Webb.

CONTACT received the following report of the days proceedings.

Two teams from Yallourn Central Workshops played football on Sunday 29 June. You may recall that was the weekend the rain started.

Bays 5 and 6 played 7, 8 and 9 on the Hernes Oak ground. Final scores were Bays 5 and 6 scored 6. 7. 43, defeat Bays 7, 8 and 9 with 4. 4. 28.

Many rumours have resulted from the match and the following items will put the records straight.

- Fact — Plant can slide on his back faster than Eason can run.
- Fact — People from the interstate have asked for permission to talk to Wal Ogradowski.
- Fact — Anybody is welcome to talk to Shankland and Brereton.
- Fact — Mecekas, Hancock and Backman want to talk to their wives.

Mark of the day went to the umpire, John Ellingham. Best on the

## Occ. health study

A joint management/employee committee has been established to examine occupational health programs and working conditions within the SEC in the Latrobe Valley.

The Latrobe Valley Occupational Health Committee is made up of staff and wages representatives, Occupational Health and Accident Prevention Divisions' representatives and the Personnel Officer.

Committee convenor, Acting Personnel Officer, Jim Carlisle, said: "Our objective is to discuss current and likely occupational health, hygiene and associated issues which may affect Commission employees within the Latrobe Valley.

"One of our first tasks has been to discuss the 1980 occupational health and hygiene program for the Latrobe Valley.

"The workforce will be kept closely in touch with matters under discussion through their nominated representatives — and they should draw our attention to matters that

concern them through that representative."

Major occupational health activities planned for 1980 include the advancement of the hearing conservation and the asbestos medical surveillance programs together with a study of the levels of coal dust in the working environment and various projects concerned with occupational hygiene.

These projects include a review of welding operations, the use of vibrating hand tools and workbench design, together with other studies designed to document possible hazards in the working environment.

Along with convenor Jim Carlisle, committee membership comprises, Dr. Jim McCusker, representing the Occupational Health Division; John Blackburn, Accident Prevention Division; John King, wages, metal maintenance employees; Ross Simpson, staff shift employees; Robert Taylor, staff day employees; Jim Howes, wages, shift employees and the Committee Secretary is Pippa Wren, Area Occupational Health Officer.



The winning line up from Bays 5 and 6.

ground, Graham Wilson. Spill of the day went to goal umpire, Ray Greenwood. Goal of the day went to young Benno (that's right, Col's son). The goal was the result of a brilliant passage of play by Benno early in the ¾ time interval.

Kick getters for the day were Vella, Linton, Dickason and Laszczyk one each. Most others managed more than one kick and some players such as Laws, Sultana, Borg and Lovison were just plain greedy.

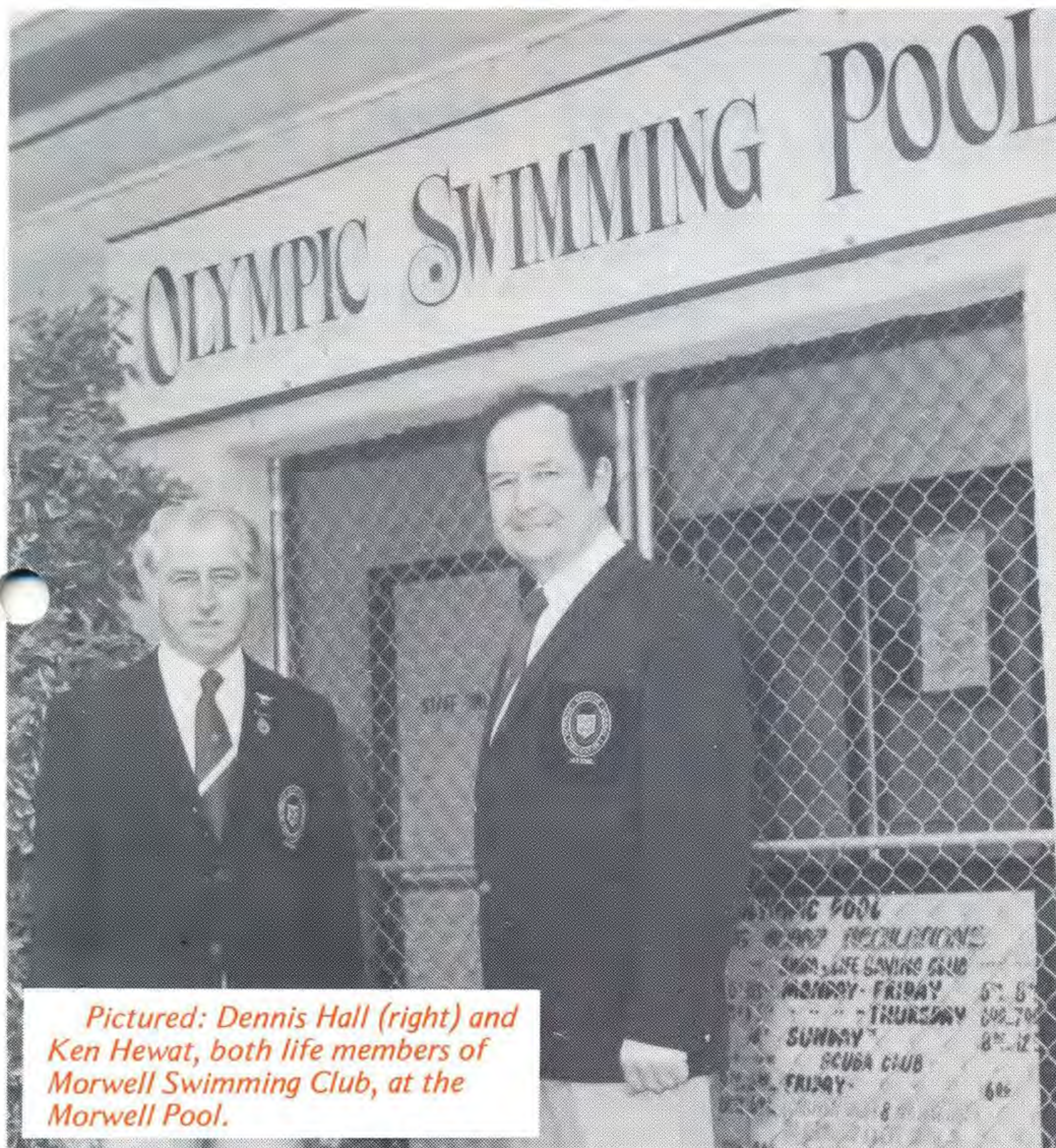
Shankland and Brereton appeared before the Tribunal on Tuesday and were found guilty on all charges.

Their six week suspension resulted from the following: 1. Failure to wear the correct attire. 2. Failure to declare their names to the umpire. 3. Failure to bring any meat for the BBQ.

Players advocate, Clem Hill, said later that both players pleaded ignorant and the Tribunal was inclined to agree with them.

The next event looks like being a marble tournament, with the Bay 4 fitters having a decided edge because they have a monopoly on the steelies.

Regards, DINGO.



*Pictured: Dennis Hall (right) and Ken Hewat, both life members of Morwell Swimming Club, at the Morwell Pool.*

MORWELL's leading hand storeman Derek Brown is just batty about cricket!

The former Moe and Yallourn opening batsman, whose finest hour at the crease yielded 75 not out, will go to any length to pursue his passion, it seems. In August he sets off to travel half way round the world to watch Australia and England battle in the return leg of the Centenary Test.

Derek (Tex) reckons that in fifteen years he hasn't missed a clash between the two sides at the MCG. And he rarely misses any international match.

He leaves on August 10 on the 21-day trip, which includes a nine day tour of Scotland, will focus on the Centenary Test and Gillette Cup at Lords and a highlight will be a dinner at London's premier cricket club hosted by former Australian Test cricketer Max Walker.

But Tex's likely to find himself the odd-man out in the party – he barracks for England. His favorite cricketer of the moment is Ian Botham, whom he expects to see captaining the English side to victory.

# Dennis still in the swim of things

Dennis Hall, Acting Secretarial Services Officer with Area Administration, is the newest life member of the Gippsland District Amateur Swimming Association.

He was awarded this rare honor – he is only the 11th life member to be appointed – when he retired recently from the position of Chief Referee in the district after nearly 20 years service to the sport.

“But I haven't finished with swimming – I'll still be around the pools next year,” said Dennis.

Dennis first got involved in competitive swimming in 1961 through his children.

In the course of the last 20 years, he has served the Gippsland District as records officer, chief judge and vice-president before being appointed chief referee three years ago. And in these official capacities he's come into contact with many of the State's swimming champions.

“As chief referee I've been responsible for more than 60 swimming meets – each meet can involve upwards of 50 organisers.

“Running a meet is a big responsibility. People who enter put a lot into the sport, with miles of swimming training each week. A mistake by an official, or careless organisation, could cost them a medal. Justice must be done to each swimmer.

“I've derived a feeling of achievement from being able to conduct a public function of that scale. It is also satisfying to be able to put something back into a sport that my own children got a lot out of (Dennis's daughter Dianne is a former State and Gippsland backstroke

champion and his son Michael was also a prominent district swimmer).

“And I am proud to have helped encourage young swimmers. I regard competitive swimming as a tremendous training.”

A number of other Commission personnel have played prominent parts in the Gippsland District Amateur Swimming Association.

These include fellow life members: Arthur Brogan, Divisional Engineer (Co-ordination and Training) with Trans Ops, a former chief referee and president of the Association and Ken Hewat, Operations Overseer at Morwell Briquetting and Power Installations, President: Don Coupe, Personnel Assistant (Staff), Treasurer, Alan Harlow, Electrical Operations Engineer with Trans Ops, currently serving as By-Laws Officer, and Peter Duncan, AGM (Personnel) a former chief judge of the Gippsland District.



## MULTI-MEDIA ART EXHIBITION

All Commission employees are invited to view the Gippsland Institute's Visual Arts students' 'Other Than A Nine Dash Five' multi-media art exhibition, to be staged in the Institute grounds from August 5 to 19.

As well as orthodox art exhibits, including prints, paintings, sculpture and ceramics, the show will include performance art with musical items and a visit by the Woman's Circus.

The exhibition – entitled to stress that creative activity cannot be restricted to rigid hours – will be open between 9 am and 9 pm Monday to Friday and 11 am to 4 pm at weekends.

Any commission employee wishing to exhibit at the exhibition, or to find out more, should phone the Organising Committee on 22 0286 or write c/o the Gippsland Institute.

## INSTALLATIONS IMPRESSIVE SEN. CARRICK

The Minister for National Development and Energy, Senator John Carrick was impressed with the size of the SEC's Latrobe Valley installations following his familiarisation visit on July 10.

He looked over the Morwell open cut, Hazelwood Power Station, Jeeralang Gas Turbine Station and Loy Yang. He also held discussions with senior SEC management before leaving for Sydney.

Senator Carrick was accompanied by the Minister for Minerals and Energy, Jim Balfour, Member for McMillan Barry Simon and AGM (Ops) Clem Joyce.

*Senator Carrick (centre) took time out to sign the Latrobe Valley Visitor's Centre visitors' book. Looking on are AGM (Ops) Clem Joyce (left) and Manager Coal Production, Jack Vines.*

## Symbol of the Valley

YALLOURN open cut Electrical Co-Ordination Supervisor, George Kimberley worked for 15 years at the old Yallourn Briquette Factory . . . and he still has fond memories of the factory.

George, a keen writer, decided to put his thoughts into verse:—

*Made from baked stone dust of the earth, it stood tall in ochre garb. This symbol of the valley was made by man to serve his needs. It could be seen from far off; a landmark, a masterpiece, a beacon to guide men to where work earned reward.*

*From a great height it looked down at its surrounds wherein men toiled with unsurpassed honesty, brotherhood and loyalty. It gazed outward at the confining hills, the valley floor of fertile pastures, flowing streams and growing townships – it invited men of stout heart to share its vista.*

*Tortured from within by the heat of fire and from without by the changing elements, it uttered no sound of distress, neither did it falter. To the ferocity of these onslaughts it merely swayed, only to recover and stand straight and tall to again defy its tormentors.*

*The torture from within ceased. Men no longer toiled beneath it. The surrounds slowly crumbled. It stood alone. Its service to man was ended.*

*Its work well done, its task complete, it succumbed to the hand of its creators. Watched by officials, a multitude of spectators and some who cared, it fell to earth with the same great dignity with which it had stood for so many years, and with equally great humility it returned to the dust from which it was made – saddened were the hearts of many men.*

*George M. Kimberley*





ENGINEERING  
SERVICES

## POWER PLUS GENERATOR

The SEC has taken delivery of its new \$90 000 mobile generator.

The 600 horsepower generator, supplied by William Adams, is the third in the Latrobe Valley but the first to be mounted on a mobile trailer.

Senior Transport Maintenance Officer Wally Entwistle said today the 500 Kv generator will be used mainly for emergencies in the Morwell open cut such as operating drive conveyors.

The bright yellow, 20 tonne, generator was transported to Latrobe Valley by a large low-loader early this month.



## TELESQUIRT SHOWS OFF ITS WARES

The SEC's new \$260 000 fire truck – telesquirt – is the first of its type in Australia.

Services Engineer (Civil) Max Williamson says telesquirt is a valuable addition to the Commission's range of fire fighting gear.

Country Fire Authority Chief Officer and CFA leaders from all over Gippsland were in Morwell early this month to see telesquirt go through its paces.

The self-contained appliance features a remotely operated major fire fighting stream and a rescue facility capable of reaching heights up to 22.9 metres.

Powered by a 450 Detroit diesel, the appliance can carry 1400 litres of water and is capable of pumping 4500 litres per minute.

Telesquirt can be used in all locations – from off the road service in open cuts for batter or dredger fires, to use in power stations where the boom can be manoeuvred inside turbine rooms or alongside boiler and conveyor structures to direct water or foam onto the seat of a fire.



*Fire Services Officer Alec 'Darby' Bremner illustrates the workings of the Telesquirt nozzle to CFA officers.*



# Meet the graduates

A dozen Commission employees were among the record 298 graduates presented with degrees and diplomas at the Gippsland Institute of Advanced Education's Graduation Ceremony on June 21.

Conferring the degrees was former Commission Chairman Sir Willis Connolly, CBE, President of the Victorian Institute of Colleges Council and conferring the diplomas was Mr. C. H. Ford, President of the Council of the Gippsland Institute of Advanced Education. The ceremony, attended by 700, was staged in the Institute's new binishell.

The Commission is committed to encouraging employees' personal development through pursuit of studies and additional qualifications seen to advance their occupational efficiency. This is demonstrated through its policy of allowing time off without loss of pay to students to attend day classes at schools and universities without loss of pay and the payment of all compulsory fees.

The SEC's Personnel Development and Services Department offers a limited number of annual scholarships to technical and commercial staff, trainees, tradesmen and apprentices. In the current academic year 35 of the Commission's Latrobe Valley-based employees are pursuing tertiary level technical courses in engineering or the applied sciences and 45 employees are pursuing commercial and arts based courses.

Among the graduates at June's ceremony were Rick Foster, Industrial Relations Officer (Bachelor of Arts); Acting Typing Services Officer Mike Answerth, (Diploma of Arts); Gordon Dadge, Supervisor, Safety and Training, Morwell Briquette Factory, (Graduate Diploma in Visual Arts); Ken Martin, Acting Training Services Officer, and Dimitra Sideras, Commercial Admin Officer, Finance Department (Bachelor of Business); Bob Speed, Commercial Admin Officer with Transmission Operations in the Valley until July 10 when he moved to Finance Department in Monash House (Diploma of Business); Suzanne Orchard, Commercial Admin Officer in Personnel Division (Graduate Diploma in Education); Mick Prokopiwski, an Engineer, Investigations Section, Coal Production Department and Ian Sunderland, an engineer with Power Generation Department's Loy Yang Plant Management Team (Bachelor of Engineering (Electro-mechanical)); Joe Gafa, an Engineer with Transmission Services, Trans Ops Department (Diploma of Engineering (Electrical)) and Murray Lobley, an Engineer with Electrical Services, Transmission Operations Department (Diploma of Engineering (Mechanical)).

1. Mike Answerth, Acting Typing Services Officer, started work on his Diploma of Arts in 1972. He's managed to combine weekend schools and ten hours study a week with a busy family life. Father of six, he's maintained 'outside' involvement with the Jaycees and the Churchill District Football Association.

Mike is pictured at the graduation ceremony with his wife Marion and their children, left to right, back row: Mark, baby Simon and Debbie and front row Susan, Shaun and Paul.

2. Joe Gafa, Trans Ops, pictured with his wife Catherine, was awarded his Diploma of Engineering (Electrical).

3. Industrial Relations Officer Rick Foster, BA, is pictured with his wife Glenys.

4. Acting Training Services Officer Ken Martin, pictured with his wife Beverly, graduated as a Bachelor of Business. Ken completed 11 of the 24 course units in 1979 as a full time student at G.I.A.E., on a Personal Development and Services commercial scholarship.

5. Ian Sunderland, of Power Generation Department, graduated as a Bachelor of Engineering. He is pictured with his wife Kerry.

6. Bob Speed, Commercial Admin Officer with Trans Ops until his move to Finance Department in Monash House in July, is pictured with his wife Rhonda — and his Diploma of Business.

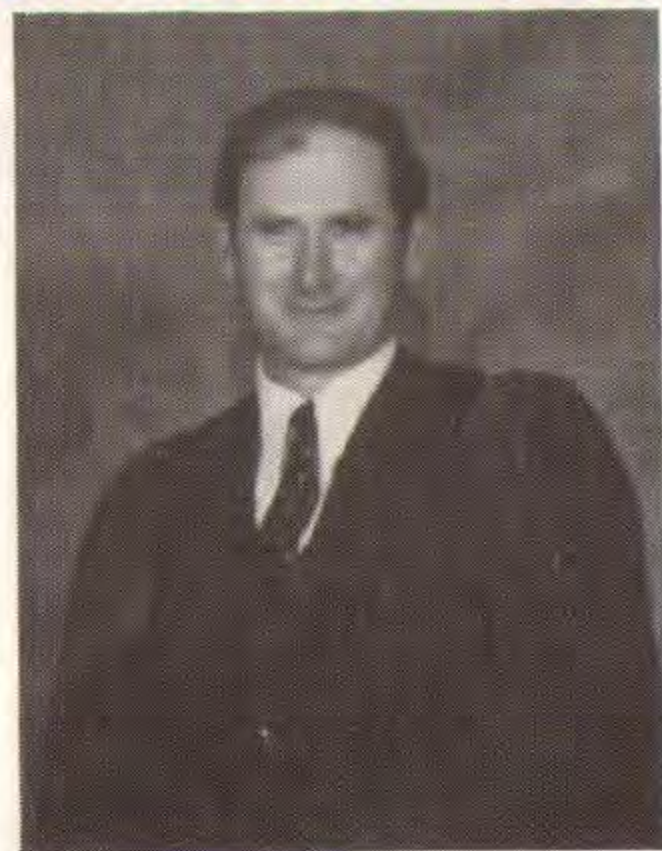
Murray Lobley's Diploma of Engineering (Mechanical) represents a quarter of a century of academic endeavour!

Murray, an Engineer with Transmission Services, Trans Ops Department, said his parents offered him the chance of further schooling — "but at the time I was rather impetuous to get out into the workforce".

In 1955 he began the long road to academic success, that has taken him through three successive institutions — the old Yallourn Technical College, and the Gippsland Institute of Advanced Education, first at Newborough and then at Churchill.

Murray has pursued many of the units through correspondence courses. "Some of them I did part time and the Commission gave me time off to go to classes — it's a tremendous help to be able to do that".

Over the years, Murray has watched a succession of syllabus



changes and additional courses added to the qualification requirements, prolonging his studies.

"There've even been occasions when I've found myself studying alongside of the sons of some of my former classmates!" he said.



For Gordon Dadge, Supervisor, Safety and Training at Morwell Briquetting and Power, June's graduation ceremony marked a very significant family achievement. Gordon, his wife Betty and their two daughters all graduated simultaneously.

Gordon's Graduate Diploma of Visual Arts (a follow up to his Diploma of Visual Arts, taken in 1978) marks the culmination of ten years hard study.

His speciality is painting with acrylic and oils, but the course has taken him into the fields of print making, commercial art and design.

"I've been a frustrated artist all my life. In England back in the 1930's and 40's there were only a couple of art schools in the country. You had to be the son of a gentleman to get in. Everyone regarded art as a bit of a hobby — no-one took it seriously," said Gordon.

His wife Betty has been striving for her Bachelor of Arts for almost as long.

Half the Dadge's weekends, and three nights a week have been spent in study.

"You've got to be pretty single minded about it — you just can't do anything else", he said.

"But we've made up for it since Christmas. I haven't done any painting — I've just been whooping it up".

Fellow graduate, with a Diploma of Visual Arts, is the Dadge's 21 year old daughter Jane — now continuing her studies at Melbourne State College towards a Diploma of Education.

And while three of the family were swotting hard at the Gippsland Institute the fourth, 23 year old Louise, was studying for her Diploma of Nursing at Melbourne's Lincoln Institute of Health Sciences — also qualifying this autumn.

Louise is now signed on with G.I.A.E. as an external student for a Bachelor of Arts while she nurses at Melbourne's Southern Memorial Hospital.

"It really wasn't planned this way. We suddenly realised last year that we were all going to finish together. All in all, June was a great month for us — we had so much to celebrate. Not only did we have four graduations — but the four of us have June birthdays too!"







## Four safe years for Group 6A

For more than four years Hazelwood Power Station's Mechanical Maintenance Group 6A has worked without a Lost Time Injury.

The 30 strong group has notched up more than 250 000 manhours.

The group's last LTI was in March 1976, since then the group has maintained an excellent safety record, which is still intact, with more than 270 000 manhours.



The group comprises fitters, trades assistants, machinists, crane drivers, plant operators, and transport drivers.

Their jobs include local transportation requirements for heavy trucks,

workshop machining and fitting.

At an informal function in the Latrobe Valley Visitors' Centre, Morwell, Hazelwood Power Station, Mechanical Maintenance Engineer, Peter Shaw, presented the National Safety Council of Australia's pennant, certificate and plaque to group representative Fred Fryer (acting overseer).

## Safety boots saved David's toes

David Nickson, leading hand boiler maker at Morwell Briquette Factory, is a man with plenty to smile about.

Thanks to his safety boots he's still got all his toes intact.

He was installing new steel plate louvres in 'C' briquette factory cooling house in March when one dropped and sliced into his boot.

The protective steel toe cap saved his toes from serious injury.

David's 'scot-free' escape qualifies him for membership of the Australian National Safety Council's Intactoes Club.

And at an informal ceremony staged in the MBPI Training Centre, Briquetting and Power Superintendent Cyril Morellato presented David with the membership award.

## St. Aiden's complex dedicated

Newborough's new St. Aiden's Anglican church complex was officially dedicated on Sunday, June 22, by Archdeacon Geoff Ross, Diocesan Administrator.

The \$138 000 complex for the combined parishes of Newborough and Yallourn is part of the Yallourn Resettlement Program. The SEC donated \$55 000 to the building appeal from the Yallourn Compensation Fund.

The new church, located at the junction of Torres and Williams Streets, stands on the site of the original Newborough Anglican church and the porch of the old weather-board building has been incorporated into the design of the new complex.

Also featured prominently in the new St. Aiden's are the windows and the Harry Bailey memorial pipe organ from St. John's church, Yallourn.



David Nickson shows the boot that saved his toes to Gordon Dudge, Supervisor Safety and Training, Morwell Briquetting and Power Installation.



# \$50 000 communications van best in Victoria



The SEC's new \$50 000 mobile radio communications caravan is the most up to date in Victoria.

Designed and constructed by the SEC's Radio and Television section, Morwell, it will serve as an important link in case of an emergency situation such as open cut fire or similar disaster.

Included in the caravan is every radio and telephone system you could imagine, two way radios, systems that work into the Forest Commission and the Country Fire Authority systems, also the open cuts radio network.

The self-sufficient caravan is unique and will play a vital role in any future emergencies.

Caravan construction and installation of equipment in the caravan took about four weeks.



*Top: Testing the equipment in the new caravan are Communications Officers (from left) Polly Politakis of Morwell and Jay Rodda of Moe.*

*Right: Carrying out a routine check on some of the complicated radio equipment is radio apprentice Fred Terpstra of Morwell.*

*Above: Fred Terpstra makes the necessary adjustment to the radio aerial on the front of the communications caravan which is based in Morwell.*



# Loy Yang water projects race



The long dry autumn weather contributed to impressive progress on many of the Loy Yang earthwork projects.

Earthworks program on the major water storage dams are now approaching completion, and kilometres of water pipelines connected to the project are currently being laid.

Loy Yang's ash pond is heading for completion several months ahead of the contractual completion date scheduled as mid 1981.

Project Manager with contractors Theiss Bros, John Doyle says dry weather and good teamwork have been major factors in maintaining progress. But another explanation is the heavyweight dozer fleet — probably the biggest excavating army on a single site in Australia.

The fleet is headed by the massive D10 — there are none bigger in Australia — powered by

*Fifteen Thiess plant operators are dwarfed by the massive D10 bucket.*

# ahead

a 700 horse power engine and can shift 45 tonnes in half a minute.

Next come two D9s, two D8s, one D7 and two D6s.

A site workforce of 116 operates two nine hour shifts and maximum progress is calculated at 30 000 cubic metres a day.

The ash pond earthworks program is now two thirds completed. When finished the dam will measure 1600 metres along the crest and 40 metres at the highest point. Two million, eight hundred thousand cubic metres of excavated materials taken from site will be used in its construction together with 190 000 cubic metres of imported materials.

The dam will measure 70 hectares by 20 metres deep and will have a storage capacity of 10 000 megalitres.

The ash pond is a half way house for the saline waste water which carries, in suspension, residual ash from the power station's boilers.

The ash pond is fed from the high level storage dam and with saline waste from Yallourn W and Hazelwood power stations. This water is circulated through Loy Yang's boilers to carry the ash in a slurry to the ash pond where the sediment settles out and the saline waste water is syphoned off to the ocean outfall at McGaurans Beach.

Next door to the ash pond is the fire services dam, where the earth fill works are only days away from completion. This dam, also being built for the Commission by Thiess Bros., measures 500 metres along the crest and 24 metres high in the centre and features a storage capacity of 4000 megalitres.

Some 400 000 cubic metres of earth fill were used in its construction — all taken from the excavations — together with 90 000 cubic metres of imported sand and rock.

Work now centres on the rip rap facing, a protective stone sheathing.

The fire services dam is fed with low quality water from the high level reservoir and discharges via the fire services outlet and the Codelfa Cogefar tunnel into the open cut. The overflow discharges via a spillway into Flynn's Creek.



*Some of the Roche Bros. team are pictured at the high level with SEC supervisor Ernie Eastwell (standing on the ground, extreme left).*

# Good progress at high level dam

Loy Yang's high level storage dam is ready to go on stream — almost bang on schedule. First water will gush into the 7000 megalitre dam within the next few weeks.

Two million cubic metres of earth have been excavated since Roche Brothers began work in January 1979 with their fleet of eight 27-cubic metre capacity elevating scrapers. One million seven hundred thousand cubic metres have been placed in the earth wall embankment.

An on-site construction team of 70 were involved in the project to build the 40 metre high earth wall dam, which measures 700 metres along the crest. It sits on top of a 200 metre long tunnel which houses two 1200 millimetre diameter pressure pipelines.

A feature of the construction program was the 20-metre high shaft of the 30-metre outlet tower built by Lewis Constructions, sub contracting to Roche Brothers — which went up in just five days, using the slip form method.

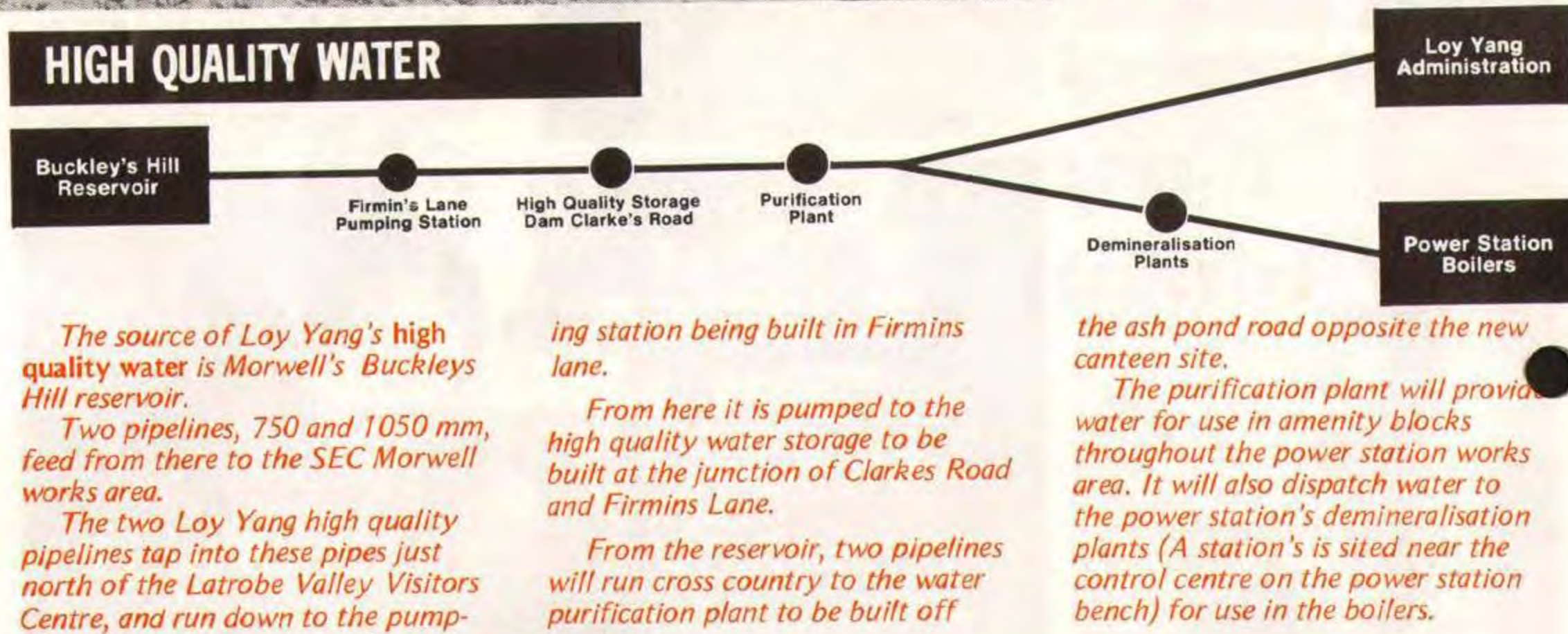
The low quality water reservoir is designed to hold sufficient water to meet cooling water requirements of the 4000 MW Loy Yang power station for twenty days.

Water is pumped to the storage dam from the Hazelwood Pondage via a 14-kilometre low quality water pipeline, built by Thiess Bros.

It will leave the dam via the outlet tower in two 1200 millimetre pipelines built by Prentice Bros and Hinsen, which run to the fire service reservoir, via the Codelfa-Cogefar tunnel and pipelines, and via separate lines to A and B power stations for cooling water.

Loy Yang 'first fletcher' Rob Stewart, the SEC engineer on the job, commented: "The long dry autumn has certainly helped speed the contract to a close and made it possible to complete before winter without delaying for another construction season."

## HIGH QUALITY WATER



*The source of Loy Yang's high quality water is Morwell's Buckley's Hill reservoir.*

*Two pipelines, 750 and 1050 mm, feed from there to the SEC Morwell works area.*

*The two Loy Yang high quality pipelines tap into these pipes just north of the Latrobe Valley Visitors Centre, and run down to the pump-*

*ing station being built in Firmin's lane.*

*From here it is pumped to the high quality water storage to be built at the junction of Clarke's Road and Firmin's Lane.*

*From the reservoir, two pipelines will run cross country to the water purification plant to be built off*

*the ash pond road opposite the new canteen site.*

*The purification plant will provide water for use in amenity blocks throughout the power station works area. It will also dispatch water to the power station's demineralisation plants (A station's is sited near the control centre on the power station bench) for use in the boilers.*

## LOW QUALITY WATER



*Loy Yang's low quality water has two sources.*

*Water from the Hazelwood cooling pond is pumped through the newly constructed Brodribb Road pumping station at the rate of 100 mega-*

*litres a day.*

*Water from the Latrobe River at Yallourn Power station is pumped at the rate of 160 megalitres a day.*

*The two low quality pipelines will meet at the low quality pumping*

*station under construction on Firmin's Lane from where it will be pumped to Roche Bros. high level water storage to provide water for the fire service reservoir and cooling water for the power station.*

# SERVICE REGISTER

## JULY

Commission staff and wages personnel who reached significant service milestones during July are included in this month's register.

	<b>25 YEARS</b>	Colin Somers Charlie Spark Les Wurlod	Hazelwood Power Station Yallourn Open Cut Yallourn Power Station
Fred Garnett Graham Northover Marc Barrow Tom Heddles Cyril Yeomans Harry Muhlberg Michael Riley	Yallourn W Power Station Hazelwood Power Station Hazelwood Power Station Yallourn Power Station Yallourn Power Station Payrolls, Yallourn Morwell Briquette and Power	George Theobald	<b>36 YEARS</b> Yallourn Power Station
John Morgan	Central Workshops Yallourn	Norm Maxfield	<b>39 YEARS</b> Transport Workshops Yallourn Yallourn Power Station Civil Services Yallourn
Jim Stenhouse Josef Szewczyk	Civil Works Yallourn Morwell Briquette and Power	Neville Lawrence Irving Baillie	
Oliver Dufficy Alex Halkett	Yallourn W Power Station Morwell Briquette and Power	John Arnold John Haughton	<b>40 YEARS</b> Civil Services Yallourn Central Workshops Morwell
Jacob Van Maurik	Central Workshops Yallourn	Bill Smith	<b>42 YEARS</b> Yallourn Power Station
Daryl Dean Joe Vella Fritz Teller	Stores, Yallourn Yallourn Open Cut Yallourn Power Station		
	<b>30 YEARS</b>		
Duncan Guthrie Joe Walton Mark Storie Leo Hopkins Vytautas Bucys Ken David Michael Sullivan Bill Warnock Ron Bilson	Drafting Yallourn Yallourn 'W' Power Station Stores, Morwell Public Relations Morwell Yallourn Open Cut Central Workshops Yallourn Yallourn Power Station Yallourn Open Cut Central Workshops Morwell Yallourn W Power Station		
Max Kane			
	<b>31 YEARS</b>		
Bill Evans	Yallourn Power Station		
Arthur Furness Tony Daddo	Yallourn Open Cut Morwell Briquette and Power		
	<b>32 YEARS</b>		
Denis Barry-Murphy Jim Ludlow	Yallourn Power Station Area Services Yallourn		
	<b>33 YEARS</b>		
Jack Tadday Jim Blucher	Yallourn Open Cut Transmission Services Yallourn		
Frank Williams Colin Gordon Keith Cooke	Civil Works Yallourn Yallourn Power Station Yallourn Open Cut		
	<b>34 YEARS</b>		
Jack Embleton	Morwell Briquette and Power		
Ian Smith	Morwell Briquette and Power		

## Where there's a will....

Have you made a will?

If the answer is no, then it is something you should consider.

Everyone over the age of 18 should have a will, said Acting Personnel Officer Mr. Jim Carlisle.

"During the recent sessions on the revisions to the Employees Retirement and Benefit Funds, I became concerned that many employees did not have a will.

"You don't have to be wealthy to have a will, it is simply a means of ensuring that your assets are distributed as you want them to be after your death.

"Not every relationship is legally recognised – for instance a de facto wife may not be legally entitled to a share of your estate. And if you're single and your relatives aren't traced, then the entire estate could go to consolidated revenue.

"Failure to make a will can lead to long delays in the settlement of the estate – sometimes several years – and this can cause hardship to those you cherish.

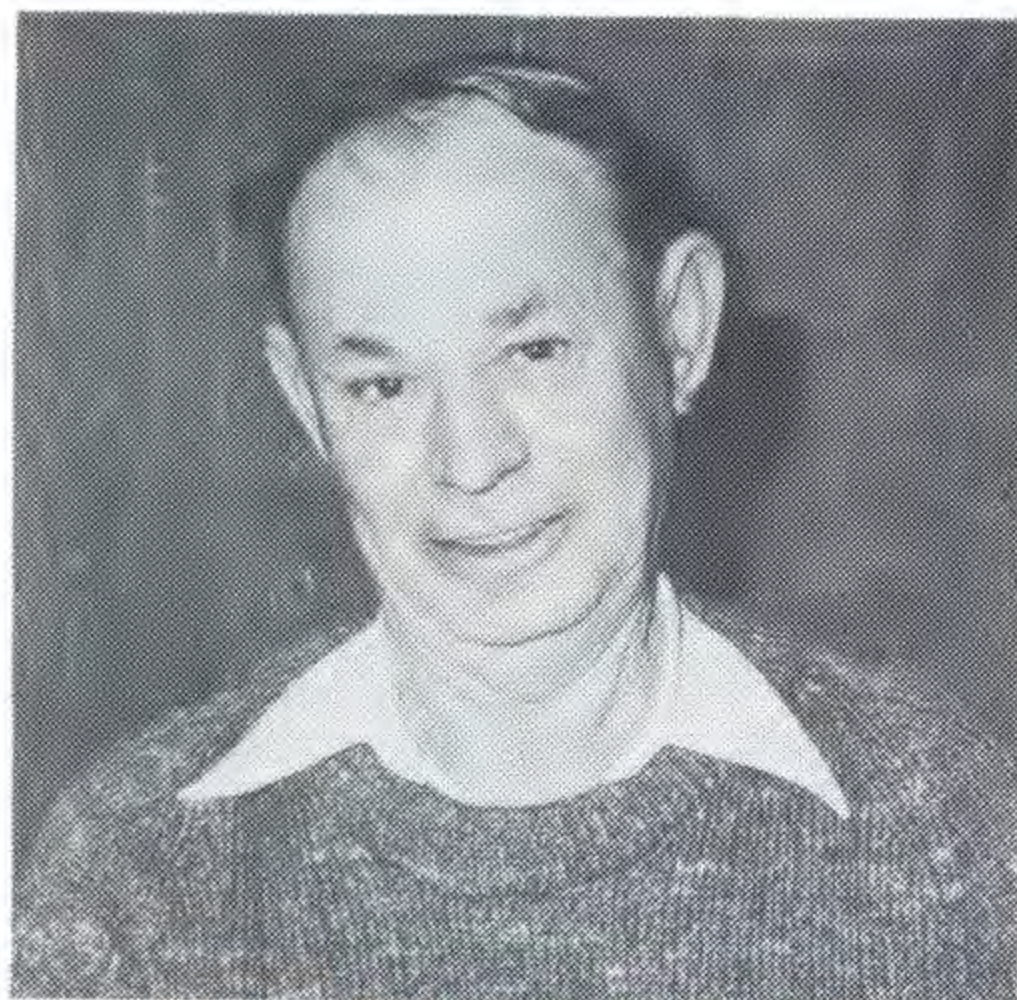
"The revision of benefits for Employee Retirement and Benefit Fund has highlighted the need for all employees to make out a will.

"Rod Doig, the Amenities Officer is also available to advise on these matters. Rod should be contacted through line supervision.

"Your local clerk of courts will answer any questions you might have – and the AMWSU has provided a free solicitor for its members who want advice on making a will," said Jim.

"Remember you automatically invalidate previous wills if you make a new one and, in some cases, if you marry," said Jim.

# retirements



### ROY SOMMERVILLE

Roy 'Skiddy' Sommerville, the first person (No 1) employed at the Morwell project retired from the Commission after 39½ years service on July 10.

The well-known and popular 'Skiddy' was signed on as a laborer in the Morwell open cut on November 28, 1940.

Skiddy worked his entire career with the Commission at Morwell. In September 1941 he moved to Municipal, Morwell as a sanitary cleaner, then a chainman at Morwell Bridge.

In July 1943 he transferred to a truck driver in the Morwell open cut and became a rigger in May 1954 with General Services. He received a promotion to storeman in the Morwell workshops in 1956, transferring to Stores in 1960. He retired as a leading hand storeman.

In retirement Skiddy will live in Morwell and enjoy his hobbies of fishing and gardening.



### SAM HUGHES

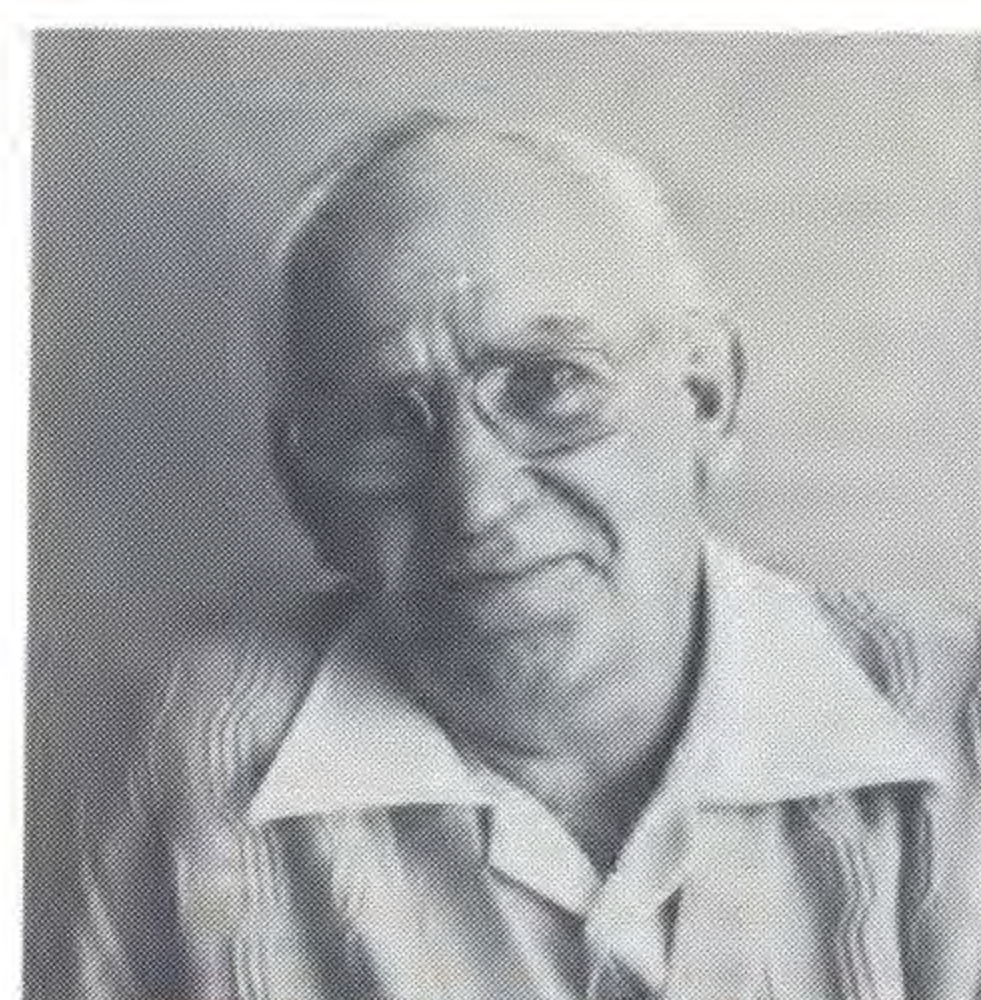
After more than 24 years service with the Commission Sam Hughes called it a day on June 17.

Sam began with the Commission in July 1954 at Electrical Construction, Yallourn, after a break in service he rejoined the Commission in May 1957 as an electrical fitter with Coal Production, Morwell.

He was appointed Technical Services Officer in March 1978, the position he retired from.

In retirement Sam and his wife Mary will continue to live in Morwell, and have the occasional holiday on the New South Wales south coast. His hobbies of fishing and bowls will also take up much of his spare time.

At an informal farewell function in the Morwell Coal Production Office, Morwell Open Cut Superintendent Bob Lethlean presented Sam with a radio cassette recorder and Mary with a brooch and a sheaf of flowers on behalf of his workmates.



### RUBE CREIGHTON

After 21 years service with the Commission Rube Creighton intends to have a relaxing retirement enjoying his past time of horse racing and playing the pockies.

Rube is currently enjoying a holiday in Merimbula with his wife June.

He began his Commission career as a tool storeman at Yallourn in September 1959. He became a driver and was then promoted to patrolman in October 1963, the position he retired from.

At an informal farewell function in the Yallourn Wess Mess, Yallourn Patrol Supervisor Dick Gray presented Rube with a wallet of notes on behalf of his workmates.

## It's Showtime

It's Scout Showtime again – and Commission employees are playing an important role in making sure it's the best yet.

The 12th annual Strzelecki Scout District Showtime revue will be staged at Morwell High School assembly hall on August 14, 15 and 16.

Tickets are available from Rivières, Church Street, Morwell or at the door.

*Pictured here are some of the Commission people who have been involved in the organisation of this year's Showtime (from left): Alan Murray (Trans Ops, Yallourn), Howard Jensen (Trans Ops, Morwell), Ray Beebe (Power Generation, Yallourn), Ray Haines (Power Generation, Hazelwood), Rod Scholes (Coal Production, Yallourn), Reg Kemp (Construction, Loy Yang) and at the piano Keith Taylor (Coal Production, Loy Yang).*



# EMPLOYEES' LEADING ROLE

SEC employees are playing a leading role in the Latrobe Valley Football League.

Their involvement is from League President down to individual players.

The executive team includes: president Jack Huxtable (Chief Administrative Officer, Morwell), treasurer John Hayden (Departmental Commercial Officer, Power Generation, Morwell), assistant secretary Ben Sutcliffe (Roster Clerk, Yallourn 'W'), and Mike Answerth (Secretarial, Morwell).

The LVFL tribunal also includes four commission employees. They are: Ray Greenwood (Manager, Engineering Services), Kevin Richardson (Public Relations Officer), Leo Donovan (Yallourn Workshops) and Bob Nuske (Loy Yang).

There are also a number of club officials including: Bob Meredith, Yallourn Football Club (Yallourn Workshops), Graeme Giblett Moe (Yallourn Power Station), Gordon Cantwell Newborough (Civil Works, Yallourn), Peter Leslie Traralgon (Public Relations, Morwell) and Lindsay Ryan Newborough (Yallourn open cut).

At the last count there were more than 30 SEC employees playing football with Latrobe Valley Clubs.



*Chatting before a recent executive meeting in Traralgon are (from left) Ben Sutcliffe, John Hayden, Jack Huxtable and Mike Answerth.*

## HAWKS' SUCCESSFUL

Seventeen construction workers with a successful formula for team effort!

During the day they are employed on SEC power station development sites — but after hours they all don the brown and gold jerseys of Morwell East football club.

Contractors and Commission staff make up more than half the team — and a number of the club's administrators.

And they have forged a record to be proud of. They were last year's Mid Gippsland League Premiers

and this season are still undefeated at the top of the league table.

The line up includes: front row left to right — committeeman Stan Brown, a rigger with Valley Rigging at Yallourn W; back pocket player Tony Marino, a rigger with AITON at W; rover Billy Gill, a rigger with Valley Rigging at W; wingman Col Skinner, a rigger with CITRA at W; half back flanker Jeff Durea, a builders laborer with Dillinghams; centreman Doc Rowlings, a trades assistant with Simon Carves at W; centreman Ian Lewis, a builders laborer with POA Constructions at W and club vice-president Brian Love, a trades assistant with Simon Carves.

Back row, left to right, shows: committeeman George Thomas, a boilermaker with ICAL at W; ruckman Neville Cox, a trades assistant with McPhees at W; backman Charlie Cauchi, a boilermaker with Masterarc at W; full forward Danny O'Donnell, a boilermaker with David Engineering at W; ruckman Peter Jenner, a foreman with Transfield at the Morwell power station precipitator installation project; forward Steve Michalades, a rigger with Simon Carves at W; back flanker Chris Richardson, an electrician with Ralph Lee at W; captain coach Bob Pacunskis, proprietor of TOP Welding, sub-contractors to ICAL at W; and back pocket players Ken McKay, a trades assistant with EGLO at Loy Yang.

Club President is Bob Munro, SEC's administrative officer at Loy Yang.

