



CONTACT

MAY, 1979



NEW BRIDGE - WORLD FIRST P. 7
ASBESTOS TASK FORCE P. 8-9

DIDN'T HURT A BIT



Commercial Administrative Officer Sylvia Houghton of Morwell, receives her inoculation from Dr. Jim McCusker. Looking on are First Aid Superintendent Ron Herbert (far left) and First Aid Supervisor Yallourn John Dyer (third from left).

A shot in the arm is worth two in the ...

Hundreds of Latrobe Valley SEC employees took advantage of the Commission's anti-influenza inoculation program early this month.

The program provides employees with some protection against influenza infection.

Senior Medical Officer Dr. Jim McCusker and Latrobe Valley Occupational Health staff toured the Morwell and Yallourn works areas inoculating employees.

This year, two different influenza vaccines are available.

Overseas and Australian surveys of people under 25 years of age have shown that this group needs a higher potency vaccine for the priming dose than that used in recent years if adequate antibody levels are to be obtained.

For those under the age of 25 years, the second injection will be carried out approximately six weeks after the initial inoculation.

Enquiries should be directed to Vern Collings Ext. 3693.

FOUND

ONE pair of gold rimmed, tinted glasses, found in Morwell open cut.

Contact: Tom O'Neill, Ext. 3133.

PROPERTY OFFICE LEAVES YALLOURN

The SEC Property Office in Broadway, Yallourn, will close on Friday.

Property Office staff - who handle inquiries concerning accommodation, house and land sales, shop leases, grazing land leases and hiring of Yallourn public facilities will be located in Wing 2 of the Morwell Administration Building, telephone 34 2244, from next Monday.

Property Maintenance staff, the Ranger and Dog Registrar, and the Briquette Advisory Service will continue to operate from their office in Centreway, Yallourn.

The rent collection service will still be available at the Property Maintenance Office each Friday.

The Yallourn Resettlement Office in Broadway, will remain open.

Contact



Prepared by the L.V. Public Relations Group for Operations Group employees.

WHOLLY SET UP AND PRINTED BY GIPPSLAND PRINTERS PTY. LTD. - MORWELL.

Cover

It's all systems go at the Jeeralang 'A' gas turbine power station South of Morwell. The \$45 million station is the first of two to be constructed off the Bonds Lane site. Full story P 14.

Inside

<i>Special Housing Project</i>	3
<i>SEC Freemasons Dinner</i>	4
<i>Apprentice Open Day</i>	5
<i>Dried Coal to West Germany</i>	6
<i>Engineering Services</i>	7
<i>Asbestos Task Force at Work</i>	8-9
<i>Area Administration</i>	10
<i>Transmission Operations</i>	11
<i>Power Generation</i>	12
<i>Loy Yang Contract</i>	13
<i>Jeeralang Gas Turbine Station</i> ...	14
<i>Retirements</i>	15
<i>Valley Visitors</i>	16

LV Special Housing Project

FIRST HOUSES COMPLETED 300-HOME PROGRAM

The first of the Commission's Latrobe Valley Special Housing project houses at Newborough have been completed and sales are being negotiated.

The project, which will inject at least 300 and possibly 1000 houses into the Latrobe Valley housing pool, is designed to help ease accommodation pressures associated with the Loy Yang power station project.

More than 150 houses — at varying stages of construction at present throughout the Latrobe Valley — will be completed by the end of the year.

Tenders will be called soon for a further 73 houses, and within two months, contracts will have been let for 300 houses.

These will be located at—
Churchill—
Glendonald Estate (104)
Sanders Estate (40)
Silcock Estate (57)

Traralgon—
Traralgon East Estate (60)

Newborough—
Northern Avenue (20)
Torres Street (10)

Morwell—
O'Grady Street (8)
Burnside Drive (1)

More than 600 people have expressed interest in buying project houses.

Finance for the Special Housing Project has been arranged by the SEC, with the Houses — all of which will include three bedrooms — being constructed by private Builders on land which has been made available by the SEC and Housing Commission.

A. V. Jennings Industries Limited and Van Vliet and Gardner have contracts for the first 159 houses.

All houses will be of top quality brick veneer construction in varying sizes and designs.

Construction is being administered by the Housing Commission and the SEC is solely responsible for the sale of all houses.



STUDYING plans for the new houses in Newark Avenue are (from left) Regional Manager for Housing Commission John Viccars, HC Works Officer Sam Grogan, Manager Area Administration George Bates, Minister for Minerals and Energy Jim Balfour and SEC Sales Officer Ken McQualter.

Thank you everyone

Dear Sir

Through this staff magazine, I would like to express the sincere thanks and appreciation of the Latrobe Valley Festival Organisation to the Commission, its management, and employees at all levels for your generous support.

We are, of course, delighted for the sake of the Latrobe Valley community that the Festival is a success and we wish it to be known that this would not have been possible without your most valuable contribution.

We have our eyes set on bigger and better things for the future and look forward to achieving these goals with your continued support.

Yours faithfully

M. D. QUINN
PRESIDENT

Fog danger calls for care

Fog is one of the most dangerous weather conditions motorists encounter — and it is a common hazard in the Latrobe Valley.

Drivers who suddenly encounter fog while driving, should use headlights or fog lamps and drive slowly.

Use the kerb, road shoulder, white lines or reflective lane markers as a guide.

The car must be able to stop within the distance the driver can see.



SEC LODGE DINNER DRAWS 100

More than 100 Freemasons attended the second annual SEC Freemasons Dinner in Kernot Hall last month.

Among the guests were former SEC Commissioner Sir Roger Darvall, Commission Chairman Charles Trethowan, former SEC Chairman Sir Willis Connolly, the Minister for Minerals and Energy Jim Balfour and the Assistant Secretary of the Grand Lodge of Victoria, Mr. Don Plaisted.

Freemasons from as far as Frankston, Melbourne, Maffra and Leongatha attended the successful evening.

Pictured (above) after the dinner were (from left) Bruce King, Ian Robinson, Chairman Charles Trethowan, AGM (Personnel) Peter Duncan, Assistant Secretary Grand Lodge of Victoria, Don Plaisted, Sir Roger Darvall, Sir Willis Connolly, George Raphael and Bob Johnston.

National medal goes to Lt. Mike Meany

YALLOURN apprentice training overseer Mike Meany has created a first for the Army's 38th Field Engineers Squadron in Yallourn.

Lieutenant Meany was awarded the coveted National medal for Services to Australia.

It's the first to be awarded in the squadron and the first for the 7th Field Engineers Regiment . . . not a bad effort when one considers there are more than 400 men in the Regiment.

Mike has been in the Army Reserve for 17 years.

He joined the army in March, 1962, with the SEC unit, 39th Electrical Mechanical Engineers, while working at Newport power station, transferring to Yallourn in 1964.

Receiving the medal has been the highlight of Mike's army career.

Col. Tom Davey (Technical Services Engineer, Hazelwood power station) presented the National medal

to Mike at an official ceremony at Puckapunyal Army Base.

● *The National Medal, an Australian Award, replaces the British efficiency medal or efficiency decoration.*

Congratulating Mike Meany (third from left) following the medal presentation are (from left) Major John Hutchinson, Staff Sgt., Arch Stone, and Warrant Officer Allan Cameron.



Apprentice fitter and turner, Wayne Kennedy, of Moe, shows his indenture form to his family (from left) Maurie, Pearl, Rhonda and Kim.



Boilermaker Steven Warburton, of Foster, chats with his mother and father, Norma and Les Warburton.



Below: Dick Stroud, of Drouin, asked his son Terry, an apprentice fitter and turner, a few questions about his trade. Terry's mother Una looks on.

148 APPRENTICES SIGN INDENTURES

A record 148 SEC apprentices who began work in January this year signed their apprenticeship indentures late last month at the series of functions attended by parents, SEC officers and members of the Industrial Training Commission.

Parents were given the opportunity to see the apprentices' work environment and to talk with instructors about progress being made.

The largest single group was fitting and turning, in which 54 apprentices are employed.

The SEC will also have 22 first-year electrical mechanics, 35 boilermakers and 10 instrument makers.

Other trades represented include carpentry, bricklaying, motor mechanics, gardening and electrical fitters.

The SEC will further boost its Latrobe Valley apprentice intake for this year to almost 200 by taking on about 40 additional apprentices in July.

More than 500 apprentices employed in the Latrobe Valley are being trained in a total of 19 different trades, making the Commission by far the largest single employer of school leavers in the Latrobe Valley.

Commenting on the SEC's involvement in apprentice training AGM (Ops) Clem Joyce said that the Commission's apprenticeship levels have been on the increase.

He said the apprenticeship intake ceilings are decided less by the Commission's actual needs — in the past the SEC has actually trained more apprentices than it required — than by its ability to absorb apprentices in field locations and to provide meaningful work there.

SEC-trained apprentices will comprise a significant part of the skilled workforce in Victoria in future years.

"We have been training apprentices for more than 50 years and has achieved extremely high standards.

COAL
PRODUCTION

DRIED COAL SHIPMENT OFF TO WEST GERMANY

Twenty-five tonnes of dried coal from the SEC's Morwell Open Cut has arrived in the Federal Republic of Germany (West Germany).

The coal, contained in more than two hundred 44-gallon drums, was stacked into special transporting containers in a seven-hour operation at the Morwell Briquette Factory on Friday, April 20 before being shipped to Cologne.

The shipment is part of a joint Australian/West German feasibility study into

the conversion of Australian coals into liquid fuels.

Preparation of the sample, prepared for the Victorian Brown Coal Council, which is responsible for the Victorian interest in the study, follows a recent visit by a party of 16 representatives from West German government and industry to the Latrobe Valley.

The party was led by Professor K. H. Imhausen, of Imhausen-Chemie, and Dr. A. Ziegler, from the West German Ministry of Research and Technology.

It is not the first time Latrobe Valley dried coal has been shipped overseas.

In 1977, larger quantities were sent to Japan, South Africa and West Germany for similar research purposes.

BOUND FOR CHINA

Coal Production Manager Jack Vines leaves early next month on a four-week Australian Government Coal Mission to China.

He will be one of eight Australian experts in a party which will be led by the Chairman of the Australian Coal Association, Mr. Dick Austen, of New South Wales.

The party will discuss further development of coal winning operations by the Chinese Government, and will exchange technical information on mining activities.

During the mission the party will visit mining operations and give technical seminars in Mongolia, Northern and Western China.

Jack, who leaves in early June, will be the first SEC officer to officially visit China to discuss coal winning activities.

● *The Chinese mine about 500 million tonnes of brown and black coal annually. In the Latrobe Valley, the SEC mines more than 30 million tonnes a year.*

First Loy Yang dredger parts on site

The first components for the SEC's huge \$32 million Loy Yang dredgers arrived on site at Traralgon South early this month.

The 60-tonne crawler frame was transported from the Bendigo Ordnance Factory to the dredger erection site off the Traralgon Creek Road.

In all, 18 crawler frames will be transported by low loader from Bendigo for the first two Loy Yang dredgers.

The 15-metre long crawler was unloaded on May 9 by two mobile cranes.

Steering arms and other associated parts will also be made at Bendigo.

Transfield (Sydney) Pty. Ltd. will fabricate steel

Two large cranes prepare to lift the 60-tonne dredger crawler frame from the low loader on to the dredger erection site.

structure and erect both dredgers.

Target completion date for the first dredger is early 1981 and the second is scheduled for completion in May 1983.

The dredgers, which are being supplied by Krupp (Aust) will be 193 metres long (as long as the Melbourne Cricket Ground oval), 43 metres high (higher than

the Central Gippsland Hospital's chimney in Traralgon) and will weigh 4300 tonnes.

They will be able to dig 3400 tonnes per hour, and will have a daily output of more than 60 000 tonnes.

The contract for the dredger is being co-ordinated by the SEC's Fuel Department Melbourne. On site supervision is by Field Division of Fuel Department.





ENGINEERING
SERVICES

NEW BRIDGE CREATES A WORLD FIRST

The new \$450,000 Mattingley Hill Road bridge at Traralgon South will create a western world first when completed later this year.

The 54 metre long bridge will carry road transport bringing materials and equipment to the SEC's huge Loy Yang project.

Top honor to Keith Barlow

LONG-SERVING Morwell Workshops Social Club member Keith Barlow has been honored with life membership.

Keith, foreman Painter, Services, has been closely associated with the social club since its formation in February 1959.

He was a member of the inaugural committee, has served as club president, social league representative and is still a committee member.

Presenting Keith with his life membership certificate, club president Alan Vernon thanked him for his hard work in many areas over the past 20 years.

It will have a load capacity of 560 tonnes, greater than any other bridge of similar size in the world.

The nearest capacity are bridges recently constructed in South Africa (550 tonnes) and France (500 tonnes).

The individual concrete beams which make up the bridge have been deepened so load capacity of the bridge could be increased to 560 tonnes to cope with heavy loads.

Work began on the bridge by contractors Hourigan and Walsh of Traralgon last month. It's expected to be completed by December this year and will be open for traffic by March 1980.

The overall supervision of bridge construction is being carried out by the Traralgon Shire Council.



Work is underway on the \$450,000 Mattingley Hill Road bridge at Traralgon South. A large crane (above) is currently drilling foundation holes for bridge Pylons.



Pictured at the presentation ceremony are (from left) vice-president Jack Brennan, Alan Vernon, secretary Peter Simpson, Keith Barlow and treasurer David Soutar.

FOR SALE

BRAND new 'Phillips' 10 lb load tumble dryer. Genuine reason for selling. Immaculate and in good working order, \$140.

Contact: Sally Holt, 62 2161 or Ext. 2738.

A joint Commission-employee task force has been set up to deal with all asbestos-related material in power stations and other installations within operations group.

The task force, which includes three management and four employees representatives, has already begun work on:—

- * inspecting locations where asbestos is present; examining proposals and recommending policy concerning the removal, processing, handling containment and dumping of asbestos material,

ASBESTOS TASK FORCE

- * recommending a program for removal and containment or substitution of asbestos material,
- * recommending and overseeing an asbestos education program.

Members of the task force are Deputy Personnel Officer Area Admin. John Drewett (Chairman); Departmental Chemist Power Gen. John Lawson; Occupational Hygienist Personnel Development and Services Leo Ruschena; employee represent-

atives Ross Simpson (Staff), Jerry Clarke (Wages operation) and George Wragg and Alf Hankin (Wages maintenance).

The Commission's policy is to eliminate materials containing asbestos wherever possible.

Assistant General Manager (Operations) Clem Joyce points out

that management and employees are already working together to develop agreed job procedures for asbestos handling while the task force will de-

fine more specifically areas where asbestos-containing materials are present.

"Areas which cannot be identified as asbestos free will be treated as if they contain asbestos until tests indicate otherwise," he said.

The program of interviews and medical examinations of people who have had contact with asbestos in the workplace, begun in February in line with Department and Labor and industry regulations enacted in December last year, is continuing.

Stringent regulations governing the handling of asbestos are being applied throughout the Operation Group.

Task force members don't regard themselves as "instant experts" on asbestos . . . but they HAVE been plunged into an "instant" self-education program which has already given them a fairly detailed knowledge of the subject.

Within days of its appointment, the seven-man team was hard at work assessing the situation; locating areas requiring attention and putting together strategies for dealing with asbestos within the Operations Group of departments.

They've taken a hard look at existing work and removal practices.

And already, they have come up with some early recommendations which are being put into practice.

As Ross Simpson and Jerry Clarke put it, ". . .

Co-operation is key to success

there's a lot of asbestos around, especially in the older power stations, and our job is to gain as much information about it as possible — and make sure it is dealt with effectively and safely." Both Ross and Jerry have worked in areas involving asbestos and they don't treat the subject lightly.

Neither do George Wragg and Alf Hankin. Alf, as a bricklayer, has often come into direct contact with asbestos.

George Wragg summed up the aim of the task force very simply:

"It is our job to recommend ways of bringing asbestos under control so that it ceases to be a risk to the health of workers."

He acknowledges that steps are being taken to deal with the situation, and agrees with John Lawson that strenuous efforts are being made throughout Latrobe Valley departments to remove and contain asbestos and to reduce asbestos fibre levels in the working environment.

All members of the task-force would like to have seen action taken earlier to combat the problem.

Task force chairman John Drewett points out that as industry became aware of the problem, the SEC moved promptly to upgrade its procedures, progressively working toward achieving the safest possible working conditions.

By bringing management and employees together in a co-operative venture, the task force provides an ideal medium for attaining its major objective.

On that score, George Wragg had no doubts — ". . . in this particular exercise, I would say we have been given an open cheque — co-operation be-

tween both parties has been 100 per cent."

He went on to say that an ongoing education program would be a key factor in the success of the task force.

"One of the problems will be to get the workforce to understand the situation the effectiveness of measures recommended by us and adopted by the Commission will depend very much upon the willingness of workers themselves to observe required work procedures," he said.

Jerry Clarke suggested that by focussing on asbestos through the task

force approach, management and employees would complement each other's efforts to deal with the problem.

The point was echoed by George Wragg, who said that while people had to understand that there were no overnight solutions, co-operation between all parties could eventually lead to the elimination of asbestos as a risk to the workforce.

Commission occupational hygienist Leo Ruschena also sees the educational program as an important element

Bottom Far Left:

John Lawson points out some effectively sealed asbestos-containing insulation on a steam feed pump at Yallourn "W" to, from left, Ross Simpson, John Drewett and George Wragg. Below:

Yallourn "W" safety officer Sid Halket, second from left, is pictured with task force members, from left, Leo Ruschena, Alf Harnett and Jerry Clarke as they discuss asbestos removal with RB Insulation workmen about to remove insulation material from a high pressure pump discharge pipe.



SERVICE REGISTER

COMMISSION staff and wages employees who reached significant service milestones during May are included in the register below:

30 YEARS:

Thomas Grant	Morwell Briquetting and Power Installation
Charles McIntyre	Transmission
William Shaw	Yallourn power station
John Insley	Central Workshops, Yallourn
Iwan Kowal	Yallourn power station
Wasy Melnyk	Yallourn power station
Paul Carabott	Yallourn "W" power station

31 YEARS:

Harold James	Yallourn "W" power station
John Grima	Coal, Yallourn

32 YEARS:

Norman Burke	Mechanical Services, Yallourn
Don Malpass	Finance, Morwell

33 YEARS:

William Smith	Transmission, Morwell
Stanley Hillbrick	Transport Workshops, Yallourn
Francis Williamson	Coal, Yallourn

35 YEARS:

Ernest Rawiller	Mechanical Services, Yallourn
-----------------	-------------------------------

39 YEARS:

George Whitmore	Yallourn open cut
James Helms	Mechanical Services, Yallourn

40 YEARS:

Gordon Wilson	Yallourn power station
---------------	------------------------

42 YEARS:

Rex Cooper	Morwell Briquetting and Power Installation
John Irving	Morwell Briquetting and Power Installation

43 YEARS:

Allen Douglas	Coal, Yallourn
Terence Salisbury	Coal, Yallourn

48 YEARS:

Colin Benson	Civil Services, Yallourn
--------------	--------------------------

Continued on P. 15



Newark Avenue nearing completion final stage ready to go

Tenders for work on the final stage of the Commission's Newark Avenue project at Newborough were being considered when this issue of CONTACT went to press.

Part of overall plans to provide alternative accommodation for retired SEC couples and widows from Yallourn, the seven stage village will house 114 former Yallourn residents.

Ninety-two people are accommodated in the 62 units completed so far.

A group of 30 former Yallourn residents moved into stages 5 and 6 early this month.

Before the move, at an informal get together in Yallourn, Manager Area Administration George Bates and Yallourn resettlement staff discussed transfer details and answered queries from residents.

The Newark Avenue units are of a high standard, and tenants who have already moved in have found them very acceptable.

● *The SEC has also been deeply involved in development of the Latrobe Valley Village for Senior Citizens. A number of units in the Village, which is behind the Latrobe Valley Hospital in Moe, have been made available to Yallourn residents.*

In addition, a number of Yallourn people have received SEC assistance to gain entry to the Yallambee Village for the Aged at Traralgon. The Commission contributed \$53,000 for a new recreation centre at the village, as part of the relocation of facilities program.

Orana, the Yallourn Elderly Citizen's Club, has been relocated beside the Latrobe Valley Village development, and only 400 metres from the Newark Avenue villa units.

The SEC's contribution to the Orana project was \$67,000.

Yallourn Resettlement Office receptionist Brenda Mitchell welcomes (from left) Doug and Dorothy Biggs and Mrs. Eileen Short to the function in the Yallourn Hotel dining room.



MOE-YALLOURN BAND DOES IT IN STYLE

THEY'RE striking up the band in style at Newborough these days.

Manager Area Administration George Bates earlier this month officially opened the Moe-Yallourn Band's new "home" at the Newborough Public Hall.

The SEC contributed \$15,000 to the development

of the new band room as part of its program of relocation of major Yallourn community facilities.

The Yallourn Band, in conjunction with its move the Newborough, changed its name to the Moe-Yallourn Band.

Speaking at the opening, Mr. Bates said the band

had played a vital role in the Yallourn community for many years.

"We hope that this move into your new 'home' will signal the beginning of a new era of activity and success for the band," he said.

Other speakers at the opening, attended by more

than 100 people, were Minerals and Energy Minister Jim Balfour, Band President Cr Eric Alexander, and Col Harvey (Mechanical Maintenance Engineer Hazelwood Power Station).

Trophies won by the old Yallourn Band and historical photographs were displayed in the new band room.



Linesman Mario Di Dio (left) and Linesman's assistant Francis Zonneveld get ready to attach an insulator to one of the new concrete poles, a number of which can now be seen on the new route between Morwell and Loy Yang.

ESAA members, accompanied by Power Generation Department Chemist John Lawson (fourth from left), chat over a cup of coffee during their tour of the Yallourn 'W' power station.



Concrete poles are in

It is probably just a sign of the times . . . but the traditional SEC wooden poles don't have things all their own way any more.

They're now being replaced with grey concrete poles.

The new and stronger poles are being introduced because they are:—

Longer lasting, more secure, fire proof and, easier to maintain.

The poles vary in size, with some up to 17 metres (51 feet) high and weighing approximately 3½ tonnes.

Currently in use in substations at Morwell and Yallourn; carrying power lines from Loy Yang and a number of other routes around the Latrobe Valley, the concrete poles have a bright future, but . . .

. . . for economic reasons, there will always be a place for wooden poles.

CHEMISTS GET TOGETHER

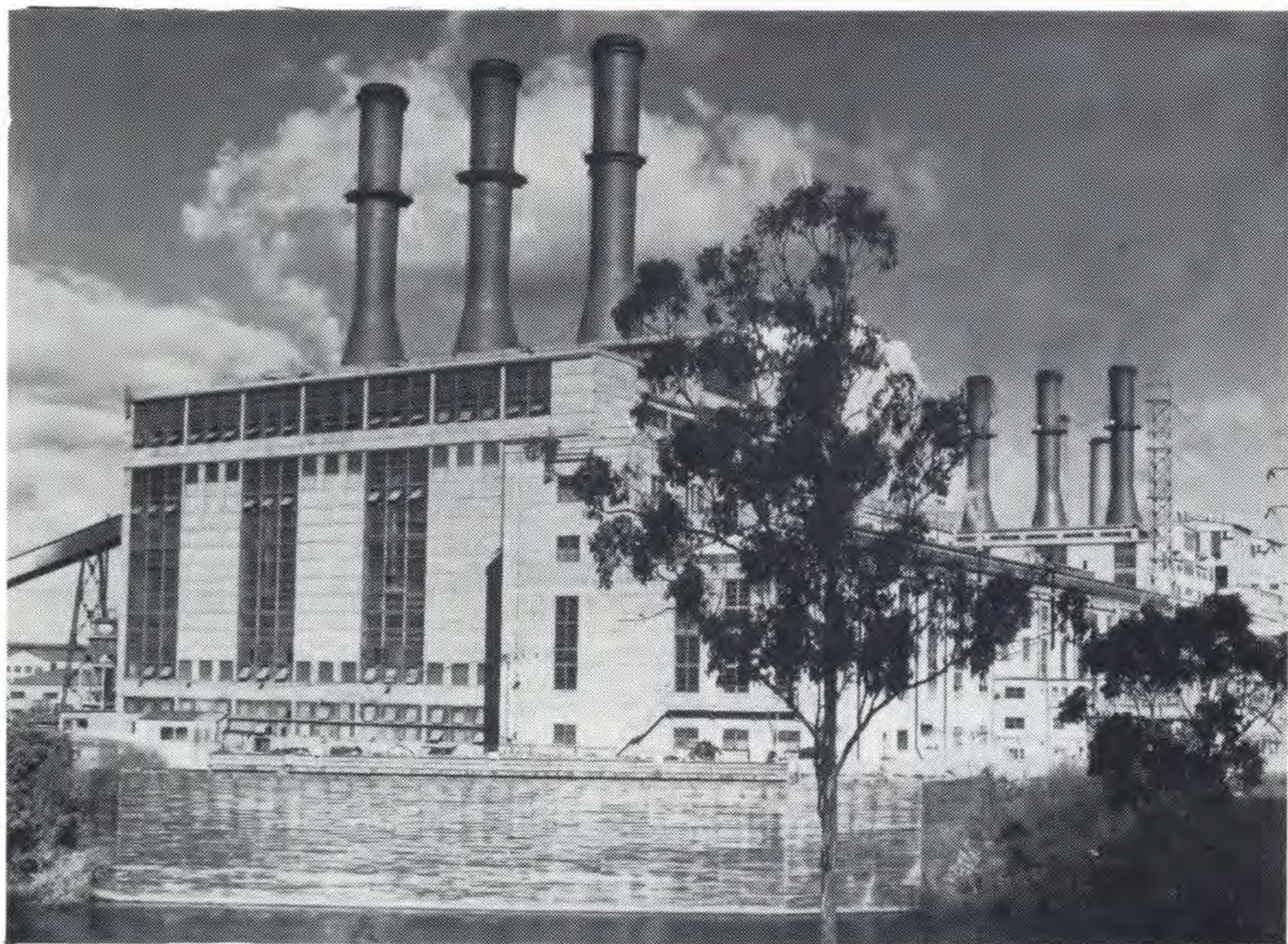
Environmental control was one of the major topics discussed at the bi-annual conference of the Electricity Supply Authorities of Australia committee Chemical Engineering Group in Morwell early this month.

Conducted in the Latrobe Valley Visitors' Centre, Authorities from six Australian states were represented.

It was the first time a conference had been held outside a capital city.

More than 30 delegates attended the three-day conference, chaired by Group convenor Mr. Doug Saunders, of Western Australia.

Several SEC chemical engineers presented papers on various facets of environmental control in Latrobe Valley, and recently-appointed occupational hygienist Leo Ruschena was another keynote speaker.

Yallourn's C and D power stations, pictured from the new Latrobe River road to Yallourn North!

Wet weather driving - take care!

Wet weather is with us again and with it no doubt the spate of motor vehicle accidents which always accompanies the first rains following a long dry spell.

We all know that wet weather reduces both visibility and traction, common sense dictates that speed must also be reduced.

Dirty windows and interior condensation add to hazards. Ensure your windscreen wipers, washers and demisters are in first class working condition.

In heavy rain, switch headlights on low beam to be visible from in front and behind.

After a long dry spell the first rain can make conditions particularly hazardous with a fine slippery mixture of dust and oil film on the road.

Under these conditions remember to avoid:

- Sudden changes of direction,
- unnecessarily sharp application of the brakes, and,
- sudden burst of acceleration.

To prevent skidding remember the A-B-C of good driving:

- Accelerate gently,
- brake gently, and,
- corner gently.

\$11-MILLION CLEAN UP PROGRAM FOR POWER STATIONS

Replacement of dust collection equipment on Yallourn C and D power station boilers is included in the next stage of the Commission's continuing program of works aimed at reducing emission levels from the older power stations in the Latrobe Valley.

Lurgi (Aust) Pty. Ltd., the company which will supply and install the emission control equipment, at a cost of almost \$4.5 million expects to have the work completed in 1981.

Extensive investigations have been carried out over several years, both at Yallourn Power Station and at the SEC's Herman Research Laboratory in Melbourne to determine the most suitable replacement equipment for the older plant.

Existing dust collectors installed between 1954 and 1957 do not achieve adequate results by today's standards.

Additional emission control equipment is also being installed on Morwell Power Station.

Electrostatic precipitators have been in operation on two of the eight boilers at the station for some months.

A third unit came into operation last month and a fourth is expected to come into service by the end of this month.

Precipitators will be installed on the remaining boiler early next year.

Cost of the program will be more than \$11 million.

The precipitators, which extract dust and ash particles from the boiler gases before they are discharged to the atmosphere, replace mechanical collectors at the station.

FOR SALE FOR SALE

VARIOUS items of furniture:

Seven piece dining setting, \$40.

Buffet, \$20.

Coffee table, \$15.

Floor polisher, \$30.

Contact: P. Spehr, Ext. 3664.

AUTO tent, 12 x 18 feet in good condition, plus a four-man cottage tent with built in floor and windows. Also 1964 XM Falcon station wagon, in good condition, best offer.

Contact: Sid Osborne, 23 Butters Street, Morwell.

SR. GREIG TROPHY AWARD TO YPS

Eight years without lost time injury is an excellent achievement — on which brought its reward for a group of YPS personnel.

For working more than eight years with LTI, five Yallourn power station shift electricians have been awarded the Sister Greig Memorial Trophy.

Since their last LTI, in 1971 the men have notched 110,000 manhours without an accident, and are still going strong.

Joe Franssen, Syd Steele, Malcolm Douglas, Joe McNicoll and Ches Lee work in conditions which can be difficult at times.

In view of this, the station management regarded the electricians' record as outstanding.

Acting YPS Superintendent Bryce McRitchie presented the trophy to Joe Franssen, who has worked with the Commission for more than 25 years without a Lost Time Injury.

• *It is the fourth time the Sister Greig Memorial Trophy has been awarded since its inception last year.*

FOR SALE

4½ HECTARES unspoilt bushland; natural flora and fauna; substantial deposit of peat; 3 prime building sites with easy access main road; school bus; SEC power; good development potential for water supply; 6 mins. drive from Loy Yang. Outside IDO. Inquiries should be directed to the Editor, Contact 3228.



CONGRATULATIONS. Acting Yallourn Power Station Superintendent Bryce McRitchie presents the Sister Greig Memorial trophy to shift electricians Syd Steele, (centre) and Joe Franssen.

\$24.5 Mill. Loy Yang Equip.

A \$24.5 million contract for control, instrumentation and data processing equipment for Loy Yang A power station has been won by a NSW Company.

The contract was awarded to Leeds and Northrup Australia Pty. Ltd., of Alexandria, New South Wales.

Assistant General Manager (Development), Mr. Jack Johnson announced last week that the equipment would be progressively delivered and commissioned between 1981 and 1985.

The contract covers three main sections of equipment for the four 500 MW generating units, and general plant common to all units.

The first section includes boiler and unit automatic modulating controls, together with all associated measurement and instrumentation systems.

This is primarily to con-

Contract awarded

trol unit dynamic performance and output.

The second section provides automatic sequence controls for the starting, stopping and protection of plant.

The third section, data processing systems for each of the four units and a fifth one to cover all general plant, includes selectable operator displays, long-

term data storage and calculation of plant parameters.

All three sections are coordinated into a single comprehensive system to provide safe, reliable and efficient plant operation, together with the optimum in information presentation to the operator.

The contract provides for 71 per cent of work to be carried out in Australia.

FOR SALE

HOLDEN HK, HT and HG parts.

One new rear louvre, \$35.

Lowered coil springs, \$15.

Front bench seat (Tan), \$20.

Monaro instrument panel, \$5.

Tow bar, \$10.

HK workshop manual, \$10.

V8 workshop manual supplement, \$6.

One VDO new oil pressure gauge, \$16.

Contact: R. Pentland, Ext. 2451.

JEERALANG "A" COMES ON STREAM

Construction of the Commission's newest power station — the 200 MW Jeeralang "A" gas turbine station — is complete.

Commissioning tests on the fourth and final gas turbine unit were completed at 2.15 p.m. on May 12, three days ahead of schedule.

Construction Engineer, Power, Latrobe Valley Don Bromilow said completion of the project in such a short period represented an outstanding construction achievement.

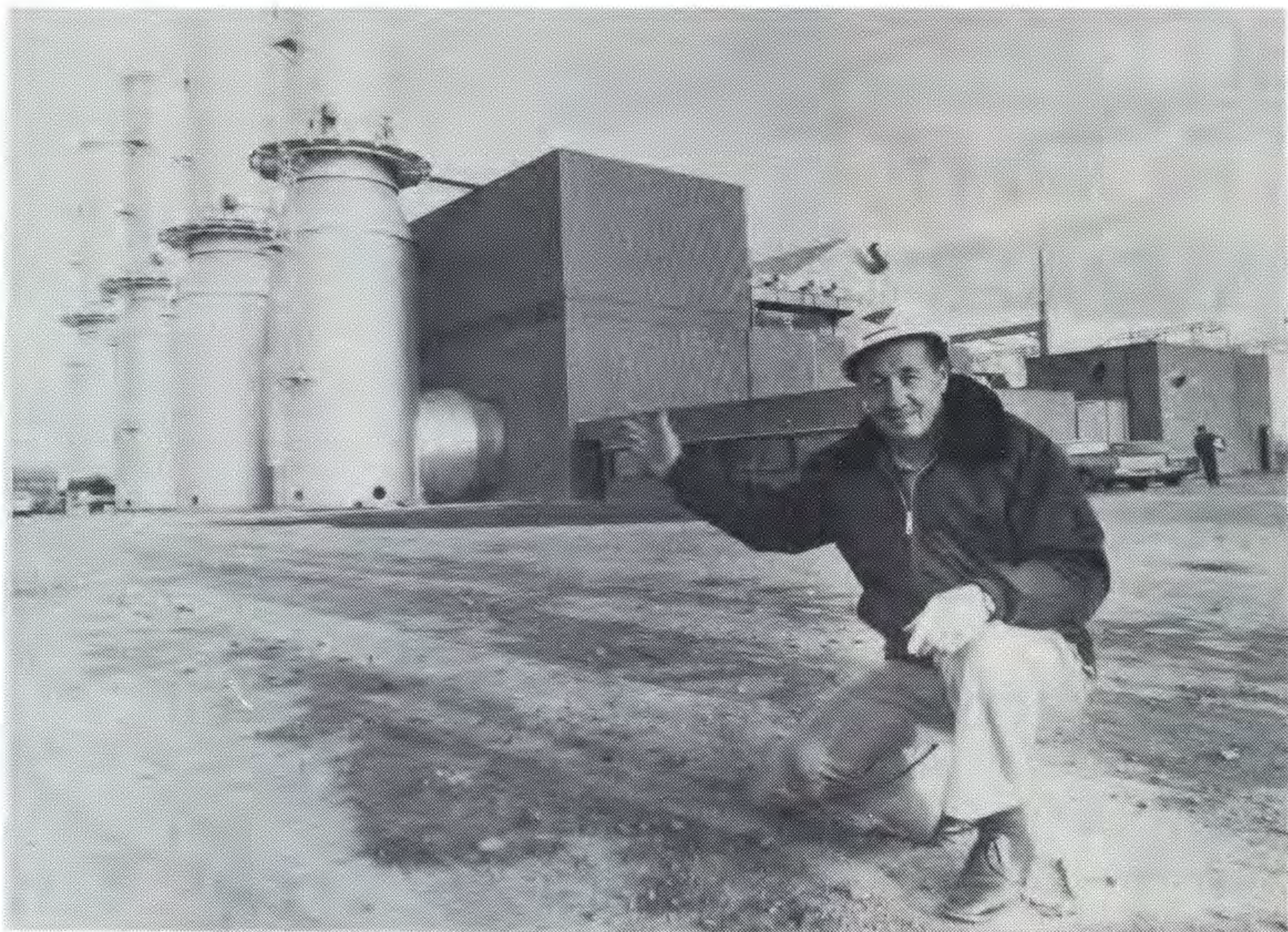
Site works for the \$45 million station in Bonds Lane south of Morwell began less than two years ago.

Siemens Industries Ltd. supplied the gas turbine equipment, most of which was shipped from Germany in large modules, completely assembled and ready for

operation. This ensured the erection and commissioning period was kept to an absolute minimum.

More than 50 Latrobe Valley companies have been involved in work on the project. Construction workforce peaked at 265 in June last year.

The first Jeeralang unit began commercial operation on October 11 last year and other units have followed progressively.



Construction of the Jeeralang 'B' gas turbine station (below) has moved along smoothly since work began early this year.

Gas turbine contracts superintendent Frank Fletcher, pictured in the foreground of Jeeralang 'A' station, a project he has "nursed" along for almost two years.

Second Jeeralang station under way

The first chimney and exhaust silencer equipment for the Jeeralang 'B' gas turbine power station was placed in position early this month, and the first French Alsthom Atlantique 80 MW turbine has also been positioned.

The 50-tonne chimney was lifted into place in one piece by two large mobile cranes.

Construction of the 'B' station is now well under way with more than 60 per cent of the structural framework erected.

All three of the 80 MW turbines arrived from France fully assembled. The first unit is expected to enter service in November this year, with synchronisation of the second unit scheduled for January.

The third and final 'B' station turbine is expected into commercial operation in February next year.

Both stations will be remotely controlled from the Latrobe Valley Control Centre at Morwell.

Each turbine can be brought up to full capacity in 12 minutes or less. This compares with the five to eight hours required to activate a coal-fired thermal unit.

THINKING OF TRAVEL

THEN CALL ON
BOB DICKINS AT THE
SEC CREDIT UNION TRAVEL SERVICE

248 Commercial Rd, or Phone: MORWELL
34 5664

(12 noon-5 p.m. daily)
SALE (44 3976 A.H.)

OFFERING
PERSONALISED
SERVICE TO
MEMBERS AND
THEIR FAMILIES
LOCAL AND
OVERSEAS
BOOKINGS.

BOOK YOUR
TRAVEL AND
SAVE

Operated by
Stewart Moffat
World Travel Service.



retirements

JOHN MIZZI

A HOLIDAY in Malta is among the first retirement plans of John Mizzi following his retirement from the Commission on April 12.

When John returns from Malta, he intended to enjoy his hobbies of fishing, shooting and gardening.

John began his 24 years service with the Commission in February 1955 as a laborer at Morwell Briquette factory. He then became a skilled builders laborer at Civil Works Morwell for 12 months and was a trades assistant at the Central Workshops in Morwell from September 1958.

(Continued from P9.)

ASBESTOS TASK FORCE

“However, following discussions with the Chief Accident and Protection Engineer, we will be making both sizes available. It is also being suggested that maintenance be the joint responsibility of the user and the relevant line management.

“And we are looking at areas in which we now have respirators effective against dust but not approved for asbestos protection. The risk there is obvious, and we are moving toward the removal from service altogether of non-approved respirators.”

FOR SALE

ONE Gasglo inbuilt gas heater.
CONTACT: 34 5629 A.H.



John's last move was to the position of third class machinist at Morwell Workshops in June 1969.

At an informal farewell function in the Morwell workshops training centre, Acting Workshops Superintendent David Krohn presented John with a wall clock, a pipe and pipe-stand on behalf of workmates.

GRAHAM FYFE

AFTER 45 years service with the Commission, Graham Fyfe has decided to call it a day — but will still retain his Latrobe Valley identity by continuing to live in Morwell.

Graham began as a laborer with coal in Yallourn on December 4, 1934, worked for the next two years as a laborer and tool storeman.

In November 1936, he took on the position of electrical welder with Coal, Yallourn, a position he held for six years until becoming a boilermaker in August 1942. He received a promotion in May 1955 to leading hand boilermaker, the position from which he retired.

JACK JONES

Jack Jones will spend the early days of his retirement moving into his new home in Morwell.

Jack, who retired from the Commission on May 2 after more than 44 years service, has lived for many years in Yallourn.

He joined the Commission in November 1934 as a lad laborer at the old Municipal Depot and soon after began a plumbing apprenticeship.

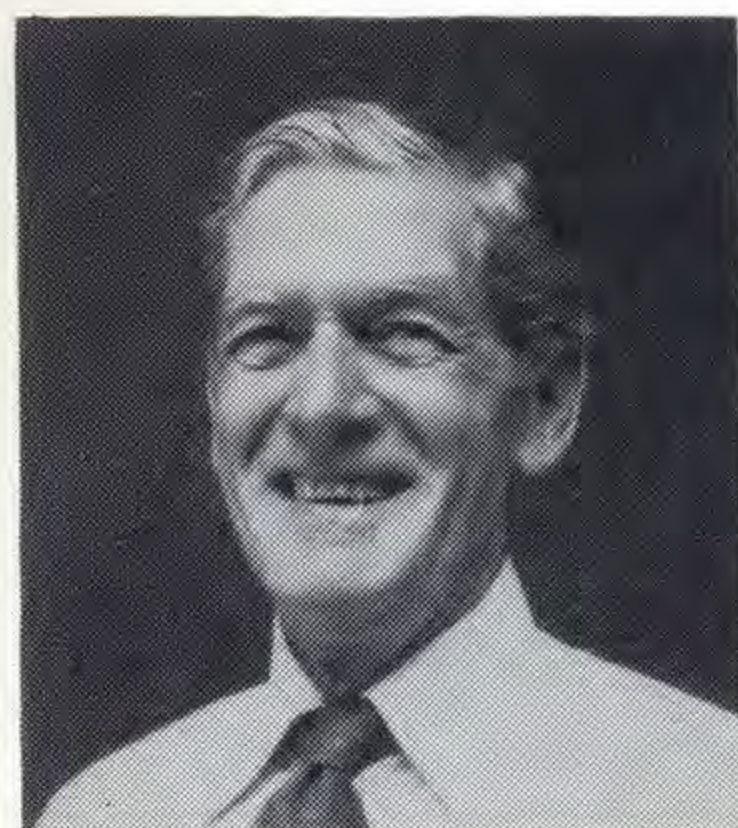
After advancing through various classifications to the position of Leading Hand Plumber, Jack was appointed to the staff as a foreman with Plumbing General Services in Yallourn in November 1950. He transferred to the Municipal Depot in November 1951 and then in June 1954 was appointed foreman, Sanitation, Civil Works, Yallourn, the position from which he retired.

In retirement, Jack and his wife Beryl plan to work on their new home.



Retirement means Graham will be able to enjoy his hobbies of bowling and gardening, although among his immediate plans is a holiday in Queensland during the winter months.

At an informal farewell function in the Yallourn hotel leading hand boilermaker Ray Cousins presented Graham with a gold watch on behalf of his workmates.



PERC DALE

PERC Dale worked with the Commission for 29 years.

He began in November 1950 as a laborer with Coal Transport Yallourn, then working as a motor attendant until 1951.

In February 1951, he became a points cabin operator at Yallourn before trying his hand as a loco driver in June 1951, the position he held until retirement.



Jack, a keen golfer, will also spend some of his new found leisure time working on his swing.

At an informal farewell function at the Yallourn Civil Works canteen, Jack's workmates presented him with a golf buggy.

FOR SALE

RESIDENTIAL block of land in Traralgon, corner Gunya St., and Sally Crt., with a northerly aspect. Situated in Erinvale Estate. Block size is 34 metres x 17 metres. Price on application, contact: Rick Crookes 3737.

valley visitors

CHINESE VISITORS LOOK LATROBE VALLEY OVER

A five-member party from the Chinese Academy of Sciences toured the SEC's Morwell open cut and Hazelwood power station on May 8.

The party was led by Mr. Gao Zheng min, Deputy Director of the Institute of Forestry and Soil in Peking.

Other members were from the Nanking Institute of Soil and Institute of Botany.

Their visit to Latrobe Valley was organised by the State Rivers and Water Supply Commission in co-operation with Latrobe Valley Water and Sewerage Board.

The groups four-week visit to Australia has been hosted by the Australian Academy of Science.

Other interesting SEC visitors last month included the USA Labor Attache to Australia, James F. Shea.

Mr. Shea held talks with senior SEC officers before touring the Morwell and Loy Yang works areas.

More than 200 delegates to the 13th annual convention of the Victorian Agricultural Societies Association which was held in Traralgon, also toured the Morwell, Yallourn and Loy Yang works on May 4.

Delegates came from all parts of Victoria to the convention, which was opened by the Premier, Mr. Dick Hamer.



Public Liaison Officer Mike Answerth and Mr. Shea discuss the age of Latrobe Valley brown coal.



Very Interesting! Members of the Chinese Academy of Sciences study a piece of brown coal during their recent visit. China has substantial coal resources, of which 500 million tonnes are won each year.



Members of the Victorian Agricultural Societies Association look over the Hazelwood power station model room.