

Rooney

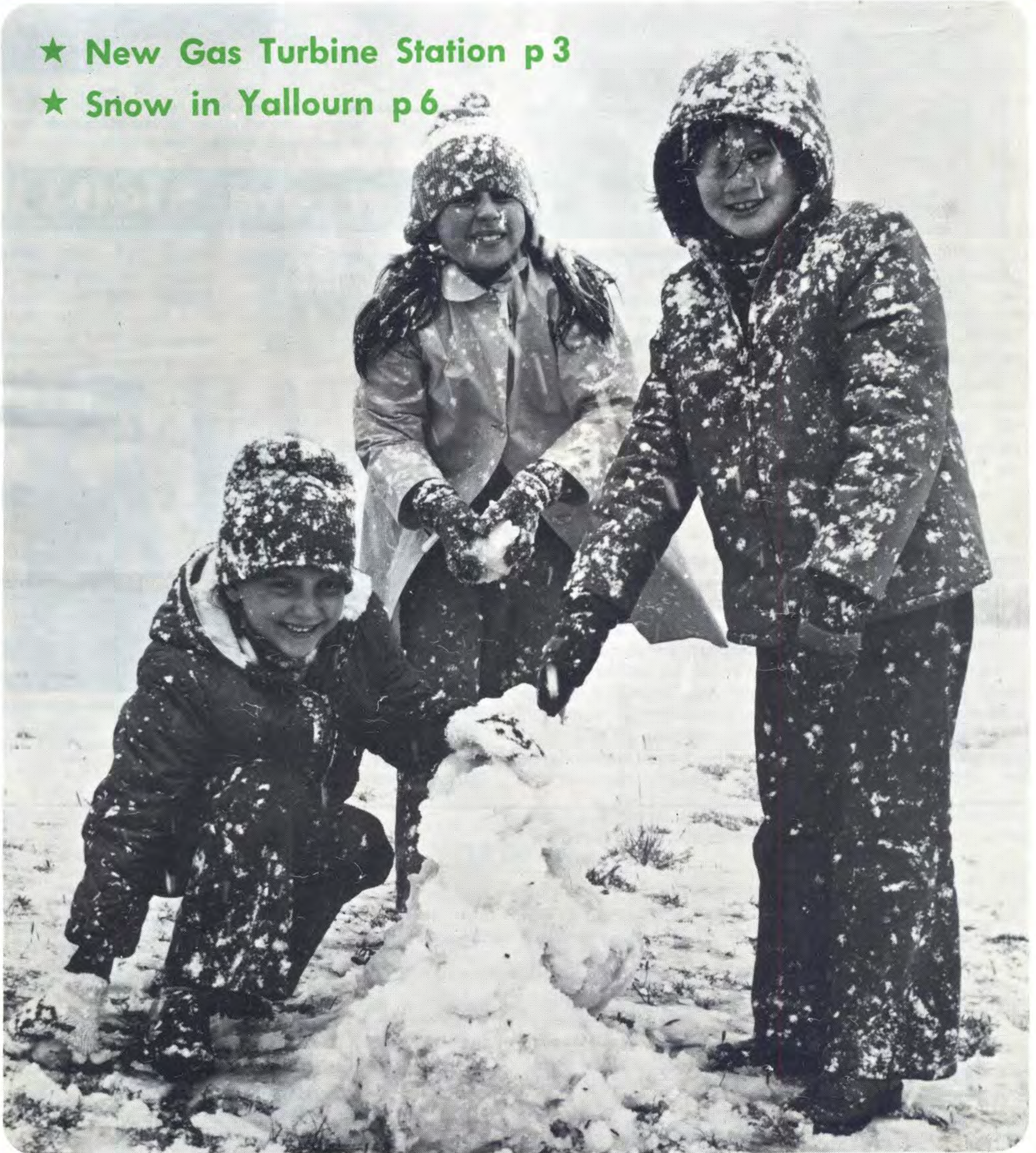


CONTACT

JUNE, 1977

★ New Gas Turbine Station p 3

★ Snow in Yallourn p 6



MAX GRAY CALLS IT A DAY AFTER 38 YEARS WITH SEC

Max Gray has moved a long way from his original seat at a draftsman's desk during a 38 year Commission career which was recalled in both serious and humorous vein at separate retirement functions earlier this month.

Tributes to his service to the Commission and to his qualities as workmate, colleague and department head were paid at Engineering Services functions on June 6 and 7 and a Commission farewell on June 9, the day before his retirement.

Max joined the Commission as a temporary junior draftsman in 1939, beginning a career which took him through the ranks to the position from which he retired — Manager, Engineering Services.

Along the way, he spent seven years in the mechanical construction field at a particularly active period in the SEC's development.

He was involved in construction of D and E stations in Yallourn; then at Morwell power station, and was mechanical construction superintendent throughout the building of Hazelwood power station.

He took up an appointment as services engineer, and when re-organisation of the then Latrobe Valley Department occurred in 1974, was chosen to head up the

Engineering Services Department, a role to which he brought wide experience and great organising ability.

Reference was made at farewell functions to Max Gray's down-to-earth human qualities and his keen interest in education and Latrobe Valley advancement. He played his part in both fields.

Max was a Yallourn Technical College Councillor for seven years, and a foundation member of the Gipps- (Continued on Page 9)



SEC Chairman Charles Trethowan (far right) is pictured presenting a colored television set to Mr. and Mrs. Max Gray on behalf of Max's many friends at his retirement function in the Yallourn golf club earlier this month.

Appeal raised record \$1404.81

The SEC's 1976-77 Ham Ballagh Memorial appeal for the Victorian School for Deaf Children has raised a record \$1,404.81.

Appeal Co-ordinator Geoff Ryan says the appeal was an outstanding success, easily surpassing the previous year's total of \$1,003.

The great response was a clear tribute to the late Ham Ballagh, a tireless worker for the School and a number of other community causes.

The \$1,404.81 gave a sizeable boost to the annual appeal conducted by the Central Gippsland Auxiliary for the School. It brought the Auxiliary's yearly total to more than \$2,500.

The cheque was presented to Auxiliary President Mrs.

June Mayze and Secretary Margarete Green, both from Traralgon, on May 25 by SEC Secretarial Officer Neville Thompson.

Also at the presentation

were Mrs. Kit Ballagh, widow of the late Ham Ballagh and Geoff Ryan.

A special Ham Ballagh memorial is to be established at the school.



The SEC's Secretarial Officer Neville Thompson (second from right) is pictured presenting the \$1,404.81 cheque to Mrs. Margarete Green. Also pictured are (from left) appeal organiser Mr. Geoff Ryan, Mrs. Kit Ballagh, and Mrs. June Mayze (far right).

Contact



Prepared by the L.V. Public Relations Group for Operations Group employes.

WHOLLY SET UP BY THE L.V. PRINTERS, TRARALGON — MOE

Cover

These three Yallourn Primary School pupils were pictured enjoying themselves, in the snow, on top of Coach Road, Yallourn by "CONTACT'S" photographer on May 31.

Inside

Max Gray retires	2
New gas turbine station	3
Female SEC's	4
Yallourn snow	6
Area Administration	7
Graduation day	8
Social club ball	9
Engineering Services	10
Power Generation	11
Coal Production	12
Transmission Operations	13
Retirements	14-15
Valley Visitors	16

Gas turbine plant contract where? why?

Earthworks have already begun at the site of the four 50 MW gas turbine unit station to be installed on SEC-owned land at the north-west corner of the Hazelwood terminal station. (The terminal station is situated between the Midland Highway and Tramway Road, immediately south of Bonds Lane).

Planting of trees between the station and Midland Highway was due to begin as this issue of CONTACT went to press.

Assistant General Manager (Operations) Bill De Campo has announced that work on the \$45 million project will begin as soon as possible, with a view to bringing the first of the four units into operation by mid 1978.

All units, with a total output of 200 MW, are expected to be operating by May, 1979.

Because the plant has been designed to be shipped out in large modules completely assembled and ready for operation, the erection and commissioning period has been reduced to an absolute minimum.

The first equipment ordered under a \$25 million contract placed with Siemens Industries Ltd., is expected to be delivered late this year, most of it from West Germany.

The new station will be fuelled by natural gas via the existing pipeline originally connected to the Gas and Fuel Corporation Lurgi plant.

It will comply with EPA requirements.

Each of the four gas turbine units will be complete with its own auxiliary plant, air filters and control equipment. Silencers will be built

into the inlet air and exhaust ducts.

The decision to install gas turbines at Morwell was made late last year as part of an overall emergency program to help ease the threat of power shortages resulting from delays in building Newport power station.

Power Generation Department's Don Clark visited New Zealand last year to discuss the design, operation and maintenance of gas turbines with the New Zealand Electricity Department.

He also inspected a gas turbine station operated at Dry Creek, South Australia, by the Electricity Trust of South Australia.

HOW NEW UNITS WILL OPERATE

The appearance of the identical gas turbine units to be sited at Morwell will be in marked contrast to Latrobe Valley power stations.

The turbine and generator plant will be installed in a building of relatively modest dimensions — about 90 metres long, 50 metres wide and 29 metres at the highest point.

The steel chimney stacks will be 32 metres tall.

The operation of the electricity producing alternator is basically the same as in the conventional coal-fired station.

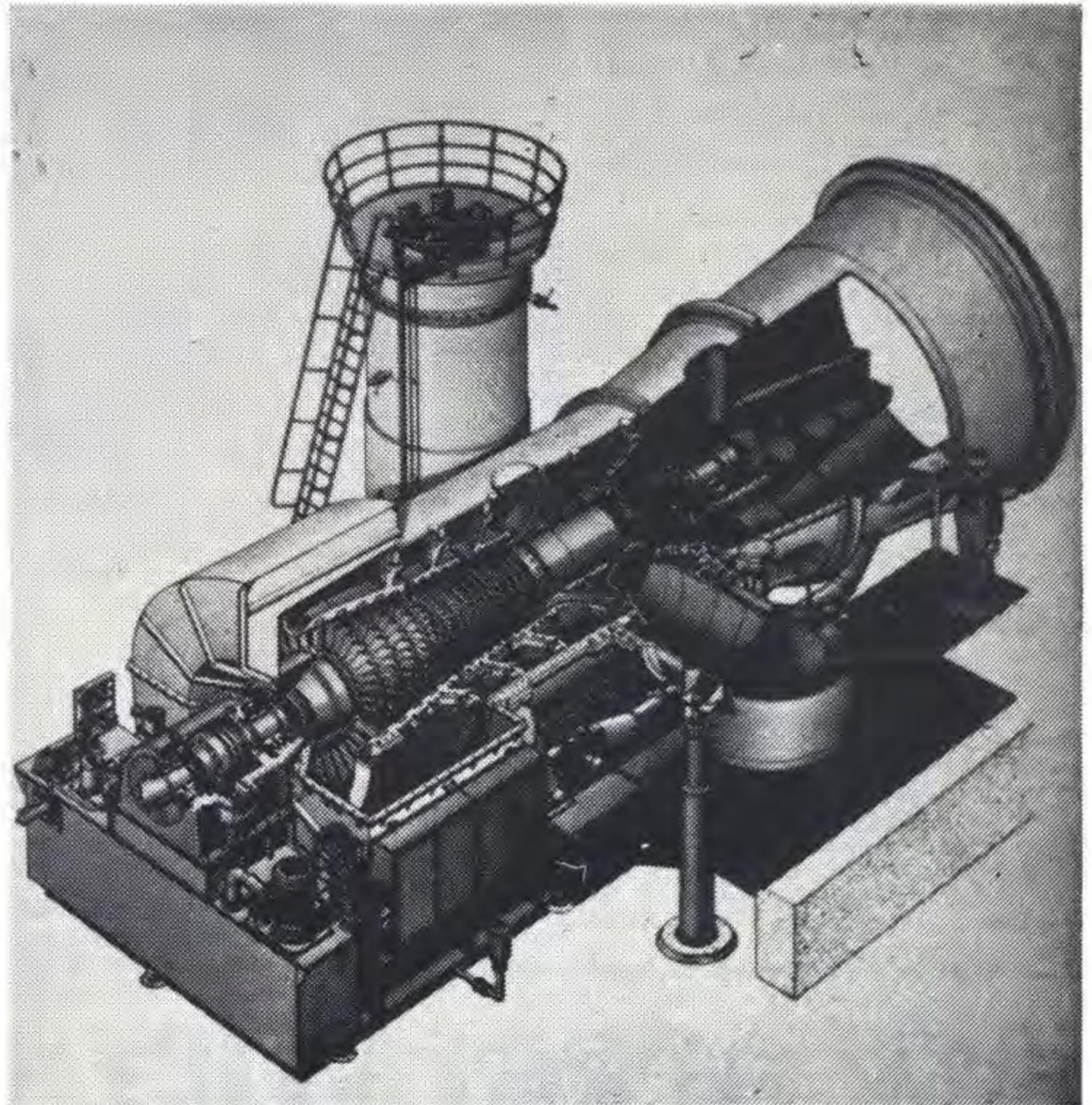
The big difference is in operation of the turbine which drives the alternator.

Gas turbines of the kind to be installed here are single-shaft machines in which the principal components — the compressor and turbine — share a common rotor and common outer pressure-containing casing.

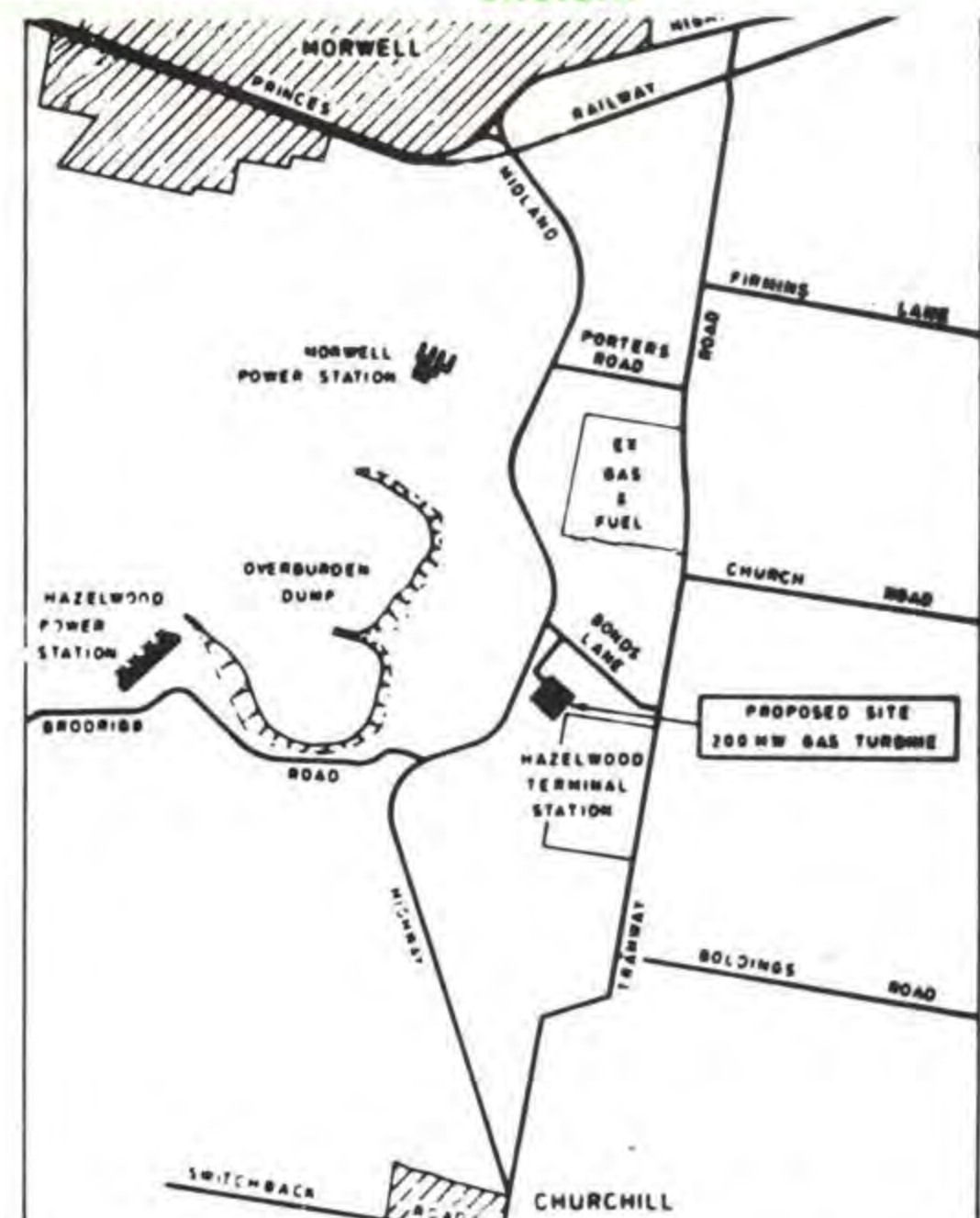
In operation, the gas turbine —

- draws atmospheric air in large quantities, supplying it under pressure to

Below: This cross-section of a 50 MW unit gas turbine gives an insight into its workings. Eventually there will be four of these units at the Jœralang gas turbine station.



Below: Proximity of the proposed 200 MW gas turbine station to the existing Hazelwood terminal station is shown in this site location sketch.



two combustion chambers situated either side of the turbine plant,

- mixes air in appropriate proportions with injected fuel (in this case natural gas),
- burns the resulting mixture in a combustion phase which, once started by an igniter, becomes self-sustaining, and
- produces a hot gas which expands through the turbine, turning a rotor to

drive both the alternator and the unit's own compressor.

In normal use, stop and start signals to each unit will be initiated from the Latrobe Valley Control Centre.

Each unit has silencers built into the air filter trunking and exhaust ducts.

For starting-up purposes, mains power will normally be used, but an emergency diesel generator will enable units to be run-up if external supply is not available.

John Naismith's comment...



"Good morning Sally, how's the new car going?"

SEC APPRENTICE WINS TOP AWARD

Yallourn survey drafting apprentice Bill Riddle has won the 1976 Yallourn Technical College Council's outstanding student award.

It is the fourth consecutive year in which a Commission apprentice has taken out the coveted award.

Last year's award winner was boilermaker Peter Northover.

Presentation of the award to Bill highlighted the annual Trades and Technology award night at the College.

Thirty-six of the 57 awards made were to Commission apprentices.

Commission employees to receive Certificates of Technology were — electrical power: Chris Lord; survey

drafting: Bill Riddle; mechanical design drafting: Robin Dean, Neil Smith, Barry Smith; survey assistant: Glen Barber, David Smith, Peter Murrell; power plant operator: John Nuttman, Richard Vella.

Higher Technician Certificate—engineering assistant: Alan Beamish, Neil Boden, Mark Farmer, Stan Ruane, Steve Vella; electrical operators: Graeme Gordon, Neil Hayhurst, Gordon Hollands, Michael Kosakiewicz, Kenneth Tate, Ross Wetherall.

Post Secondary Certificate of Technology course, 1st year — Phillip Kingwill; Outstanding student, 1976: Bill Riddle.

Apprenticeship awards — panel beating, 1st year: Mervyn Gill; electrical mechanics, 3rd year: Leby Panayiotou; fitting and machining, 1st year: Peter Maselli and Brian Lucas; 2nd year: David Duncan; 3rd year: Brendan Keene; metal fabrication, 1st year: Geoffery Bolwell; 2nd year: Michael Hogan, 3rd year: Phillip Backman; building studies, 2nd year: David Wall; electrical fitting, 2nd year: Colin Granger; 3rd year: Clifford Stott; 4th year: Darryl Baillie.

QUADRELLA!

Coal Operations Foreman John Oliver each week takes a quadrella using his SEC telephone extension numbers.

You've guessed it, he recently cracked the quadrella with the numbers 3145, and also the double with the 2 centre numbers 1 and 4. Johnny is \$500 better off and probably will never curse that telephone again.

THE FEMALE SECS

FOUR Morwell typists attended a 2 day secretarial seminar at the Southern Cross in Melbourne earlier this month. The girls were Lynda Bertoli (secretary to Manager Engineering Services), Maria Rosato (secretary to Manager Coal Production), Sharon Scott (secretary in personnel) and Jill Hopkins (senior relief typist, Morwell). Believe the girls enjoyed the course and gained valuable knowledge and experience from it.

A TWO week holiday in South-East Asia is what Val Veysey (secretary to Manager Power Generation) and Heather Lang (Senior typist, supplies, Yallourn) are enjoying at the moment. Their trip takes them to Singapore, Hong Kong and Bangkok. Incidentally, Val and Heather are being accompanied by their husbands.

DENISE Smith, senior drafting assistant, Yallourn, is recuperating at her Morwell home after spending two weeks in the Latrobe Valley Community hospital, where

she underwent a serious operation. All your friends wish you a speedy recovery, Denise.

RECEPTIONIST at Morwell, Sally Holt, has purchased a new car — a white Lancia. Safe driving Sally. While talking of cars, believe Dianne Horton (typist, Morwell) obtained her driver's licence early this month and has bought a white Torana.

TIMEKEEPING, Morwell has a new starter — Toni Sim of Churchill... welcome to the ranks, Toni.

SHARON Scott (Personnel) and her husband Robert enjoyed a week in Adelaide last month... and Jill Hopkins returned last week from a three week holiday in sunny Queensland.

THAT's all for this month girls, but keep those stories coming by ringing either ext. 3642 or 3228.



FOR SALE**ANTIQUE FURNITURE**

1 Queensland Maple Wardrobe, Two Bottom Drawers, also Double Bed, complete to match.

1 Hall Table (ex old Gramophone) "Barley Sugar" Legs and Under Rail.

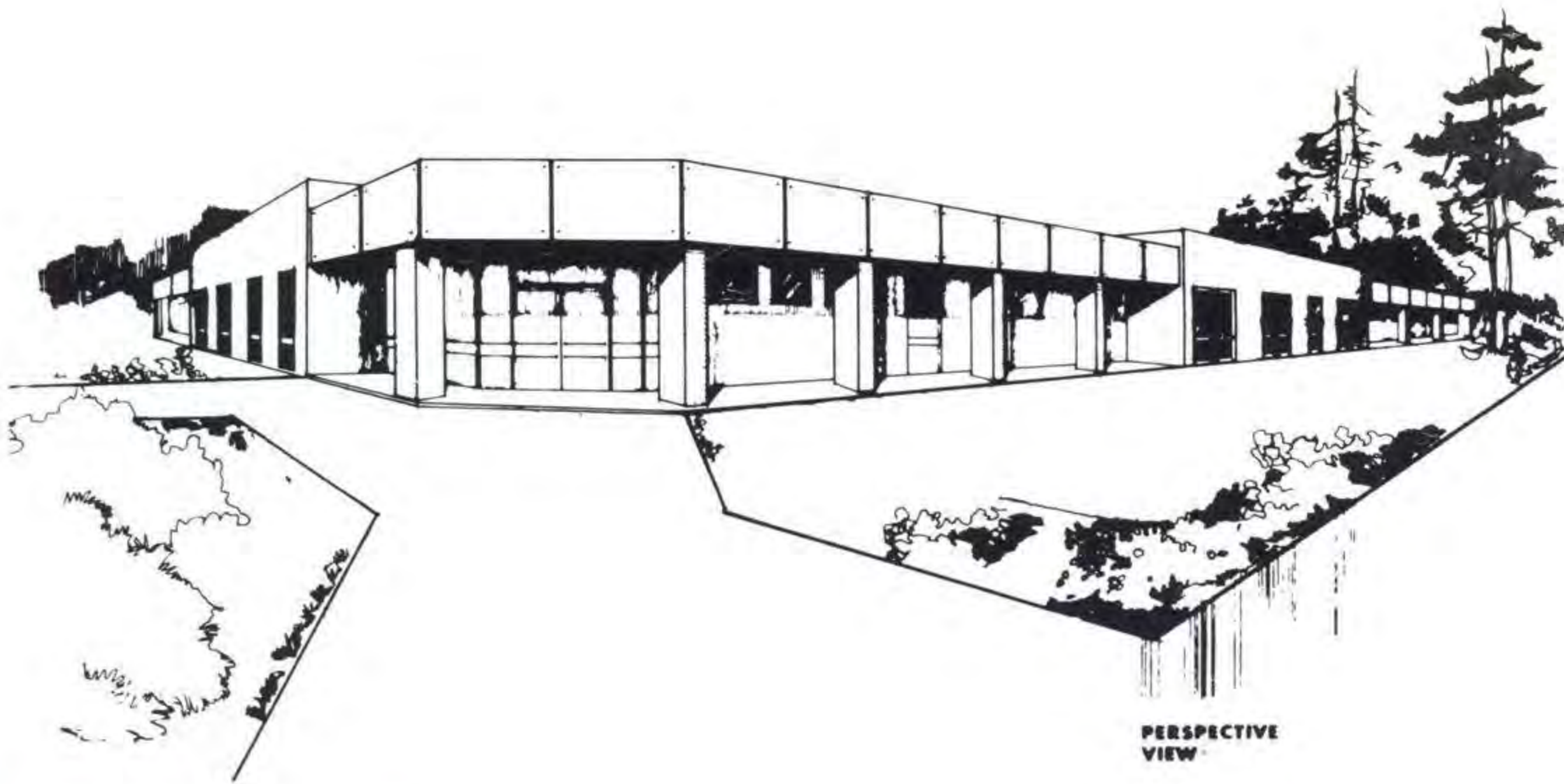
1 6 ft Side Board, 2 Cupboards, 3 Drawers, also "Barley Sugar" Ornate.

1 Rosewood Hall Stand; 1 Oak Hall Stand; 1 Cedar Chest Drawers; 1 Cedar Small Kitchen Dresser Cupboard; 1 Small Green Cane Bed-Side Table with 1 Drawer.

2 Steel Craft Pusher Prams navy blue and good condition; 1 Large White Wooden Cot and Mattress—good condition; 1 Large Chrome Cot and Mattress—beautiful condition.

Trailer — made with Frame, constructed for canopy. Rigged to take welder and bottles. Also for Holden Motor for Driving. Driving Shaft direct from motor with 6 Vee Pulleys and Control Board — already set up.

Five Wheels and Tyres (Dodge Phoenix) 775 L14's. Also hub caps for above. Phone Ext. 3295.



A perspective view of the proposed geriatric nursing home which many Latrobe Valley people hope to see taking shape in the grounds of the Latrobe Valley Community Hospital during 1977-78. It is intended to build the nursing home beside the Latrobe Valley Village for Senior citizens, facing Ollerton Avenue.

Aged care is aim of appeal

Widespread support among SEC personnel for the proposed \$800,000 geriatric nursing home at the Latrobe Valley Community Hospital has given a great boost to project organisers.

Target of the local contribution fund-raising program team is \$300,000 over the next three years — and the excellent community response to appeals for physical and financial assistance has been very encouraging.

Plans for the 50 bed nursing home envisage a significant addition to the range of services available to the Latrobe Valley's senior citizens, a community group which is rapidly increasing in proportion to other groups.

The Federal Government has guaranteed at least \$510,000 for the nursing home, construction of which could begin during 1977-78.

However, the funding is dependent on raising \$80,000 in cash by October this year and a guarantee of the remainder during the three year period.

Building of the geriatric nursing home on a site immediately north of the LV Community Hospital and beside the LV Village (for senior citizens) will be a significant step toward providing a complete care for the aged complex in the

Valley.

The LVCH is already the centre for:—

- a domiciliary nursing care service which has been in existence for 10 years,
- a day hospital — housed in temporary quarters in the hospital,
- a geriatric ward and an acute general ward, both within the hospital, and,
- the 24 flats for the aged at the LV Village.

Chairman of the Care for the Aged program is Manager, Area Administration, George Bates, who pointed

out at a site dedication ceremony earlier this month that demand for aged care accommodation would double by 1979.

He said there was an increasing need for the services the home would provide. And by providing excellent facilities for general nursing care, the nursing home will also release occupied geriatric ward beds which are urgently needed for more acute patients.

The nursing home will also greatly reduce the cost of caring for patients whose need is for general rather than the more sophisticated care provided by hospitals.

Buy a brick — by regular giving

Members of the Latrobe Valley workforce, including those within the SEC, are being invited to contribute toward the geriatric nursing home project through company payroll programs.

SEC employees are being asked to contribute on a regular basis through payroll deductions over the next three years.

One method being suggested is to "buy the bricks" for the nursing home by having a small amount deducted each pay day.

For instance, 40 cents contributed each week will buy 20 bricks, and each

additional 10 cents will pay for another five bricks.

SEC employee contributions will be suitably commemorated on a plaque at the entrance to the nursing home, and the names of individual subscribers will be entered in a Founders' Register inside the building.

Alternatively, provision has been made in the Care for the Aged program for individuals, families, companies, trusts or other organisations to make a gift of a specific section or piece of equipment.

Each dedicated gift will be designated on a perma-

nent plaque bearing an inscription of the donor's choosing.

As this issue of CONTACT went to press, approaches were being made to union organisations seeking their support and endorsement.

A number of key union officials have already privately endorsed the project and are lending their active support to the program, which they point out is in line with meeting a need long recognised by the trade union movement in the Latrobe Valley.

All subscriptions are tax deductible.



This Yallourn resident had to scrape the snow from her car's window before she could drive the car down the street.



These nine Yallourn Primary School grade three children had a ball playing in the snow at the Coach Road Lookout, Yallourn, on May 31 CONTACT's photographer snapped this picture while they were building a snowman.

Snow in Yallourn — first since 1952



This young girl was enjoying every minute of the snow even though it was very cold.

Tuesday, May 31, 1977, will be remembered by Yallourn people for many years as the day the township was covered in snow.

The SEC works area, as well as the township, received its first thick coating of snow for more than 25 years — the last heavy snow fall in Yallourn was in 1952.

Twenty of the Yallourn Primary school students and two teachers travelled up to Coach Road for an hour to play in the snow — many for the first time.

On returning from the snow, grade three pupils wrote down their impressions for teacher Lorraine Vanyai.

The impressions of three pupils Kerry Ralston, Bruce Aldrich and Bronwen Geppert, all aged 8 years — are reproduced below.

Bronwen Geppert
Tuesday 31-5-77

Today, it snowed in Yallourn. Mrs. Davis was snowed in, because they had about two feet of snow.

It is a very strange thing, but for a week I have been talking about it snowing in Yallourn.

Then I woke up on Tuesday morning, when mum came through shouting "it's snowing, it's snowing, quick wake the kids", but I was already awake and out of bed.

Mum said it was the fastest get-up ever — we got dressed in a hurry, so we could play in the snow. It was wonderful, the whole day was disrupted — it was very exciting and very unusual to see snow in Yallourn, it was a foot and a half at the lookout tower, it was cold.

Kerry Ralston

Tuesday 31-5-77

This morning it was snowing, and when I got to school our teacher took some children up to Coach Road to build a snow man, and I was one of them.

When we got there, it was snowing really heavily so I started to help the other children build a snow man.

I got really wet, then I slid down the hill on my feet and I could hardly get up.

It was really unusual for it to snow on the last day of autumn and I thought it was really exciting. I thought it was the best snow place in Yallourn up at Coach Road.

Bruce Aldrich

Tuesday 31-5-77

Today I was eating my breakfast with mum, when dad, who was just leaving for work, came back in and said it was snowing. So we went outside and on dad's car, there was a layer of sleet, and it was snowing heavily. Mum and dad said get back in (we weren't wearing warm clothing), so we went back inside and I continued to eat my breakfast and put on more sugar (not that I was allowed to).

On the way to school it was freezing, so I went inside and got warmed up.

Peter and Paul were sliding around in the corridor. I went inside to get warmed up by the heater. When the bell rang, everybody looked out the window.

The whole day was totally disrupted because of the snow. It was the first time that I had seen snow in Yallourn. When Mrs. Vanyai (our teacher) said that we could make a book (we're always making books), we went outside to get photographs of us playing in the snow.

Mrs. Vanyai was taking photographs, when Peter's and my turn came, Mrs. Vanyai said hold a snow ball above Peter's head as if to drop it, and after the photograph, I dropped the snowball on Peter's head, then we went inside.

Mrs. Vanyai said that some people could go to Coach Road, because it was one of the highest points in Yallourn. When we arrived at Coach Road, it was freezing, but we had to get out of the car, so I got out and helped make a snowman, then I was in a snowball fight. My sister had made a big snowball for the snowman, but instead she threw it at me, and missed, but I got her, then we went home.



Graeme is enjoying his job

SEC's Latrobe Valley apprenticeship officer Graeme Berryman is a man of many interests and considerable experience in various fields within the Commission.

Graeme took over the position left vacant earlier this year by the retirement of the popular Fred Douglas.

His job includes counselling of apprentices, liaison with line supervision (parents and schools), on matters pertaining to the welfare, training and de-



GRAEME BERRYMAN

velopment of apprentices, provision of study guidance for apprentices and informing applicants for apprenticeships of career opportunities.

Graeme says all apprentices should feel free, at any time, to approach him and to discuss problems or queries.

An active person, Graeme began with the SEC as an electrical apprentice; became installations inspector at Gippsland ESR; was assistant district manager at Dimboola, district manager at Apollo Bay and then training officer at Yallourn before taking up his new appointment.



Some of the cast and staff of the Shoestring Theatre's play 'Wanted, One Body' are pictured on stage. They are (from left) John Mutsaers, Bernie Shaw, John Brisco, Dave Shaw, Gaynor Gould, Margaret Tatlow and Frank Percy.



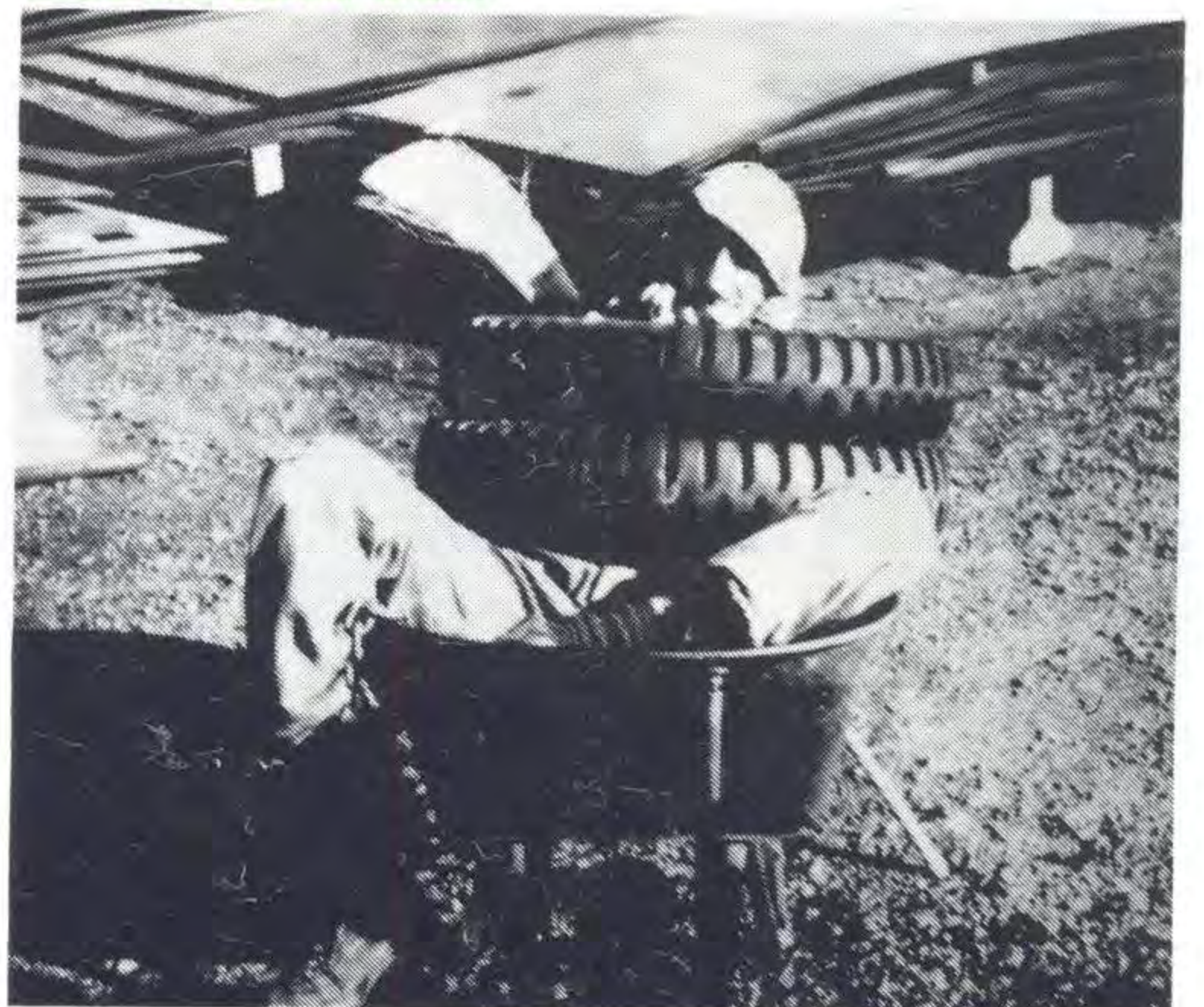
Pictured (above) before the curtains went up are (from left) Dave Shaw, Gaynor Gould and Bernie Shaw.

Sitting down on the job

Bryan Petts-Jones, 'The Blue Crane', was caught sitting down on the job by his boss on May 6, but there wasn't much he could do about it.

Bryan (a relief shift storeman) was married on May 14 to Vivian Dunn, of Traralgon, but his workmates thought they'd play a joke with him before the wedding day.

So they shackled a 40 lb weight to his left ankle; locked it to a wheel barrow and dumped Bryan into the barrow. Two truck tyres were placed over him, then the wheel barrow was filled with water.



Pictured (above) is Bryan Petts-Jones, all dressed up with nowhere to go.

Shoestring theatre

The Latrobe Valley-based Shoestring Theatre, which includes more than 20 SEC personnel, has come a long way since it was formed in February, 1976.

In its first year, the enthusiastic group produced four major productions and appears to be filling a long-felt need in Gippsland.

Its latest production, 'Wanted One Body' was a great success.

SEC personnel connected with the play included Dave Shaw (Transmission), John Mutsaers (Engineering Services), Bill Verhagen (Coal Production) John Brisco (Transmission) and the wives and/or sons and daughters of several SEC employes.

The club would welcome new members, whether they are budding actors or helping hands willing to work on construction of sets or to assist back stage.

Any body interested in joining the group should contact John Mutsaers ext. 2435, a.h. 27 3762, or John Brisco, ext. 3258.



Pictured (above) after the official ceremony are (from left) Mr. and Mrs. George Kimberley Snr., Mrs. Joan Kimberley, Mathieson, and Doug Kimberley (personnel).



Congratulations son! Peter Connolly (rigger, Yallourn) congratulates his son, Owen (centre) while his mother, Mrs. Nellie Connolly looks on.



Steven Gilbert (far right) congratulates his brother Trevor on being awarded his Bachelor of Applied Science. Their father Ray Gilbert (Transportation, Yallourn) and Steven's dog 'Ellah' look on.

SEC EMPLOYEES GRADUATE — GIAE

A number of SEC employees graduated in various subjects from the Gippsland Institute of Advanced Education last month . . . as did the sons and daughters of several SEC employees.

The graduation ceremony for the conferring of degrees and diplomas was conducted in the Traralgon Little Theatre.

Among those graduating were:— Bachelor of Arts — John Archibald (Industrial Relations), Geoff Hall (Transmission Services) and Doug

Kimberley (Personnel).

Diploma of Engineering (Civil) — Arnold Sambell (Coal Production)

The conferring of degrees and diplomas was performed by a former SEC Chairman, Sir Willis Connolly, past president of the Victorian Institute of Colleges, and by the President at the G.I.A.E., Mr. Charles Ford.

It was the first group of students — 146 in all — to be awarded degrees from a Gippsland tertiary institution.



Pictured after the presentation ceremony are (from left) Narelle Hall, Mrs. Danielle Hall, Geoff Hall, Sir Willis Connolly, Maria Hall (in front of Sir Willis) The Minister for Fuel and Power Jim Balfour and Tanya Hall.



Receiving his Bachelor of Arts certificate is Geoff Hall (left) from Sir Willis Connolly.

Life membership Cyril and 'Buddy'

"An enjoyable evening" was the verdict of more than 300 people who attended the annual Morwell Power Station and Briquette Factory Social Club's annual cabaret ball on May 27 in Kernot Hall.

Highlight of the evening was the conferring of club life membership on Cyril Morellato (Morwell Briquet-

ting and Power Installation Superintendent) and 'Buddy' Crane (rigger), who have served the Club for many years.

Club president Ken Hewat made the official presentation.

From all reports the evening was highly successful and everybody enjoyed the music of the 'Esquires'.



Pictured (above) enjoying themselves at the annual ball was this group of social club members and their wives.



CONTACT's photographer snapped this picture of people gathering food for their supper.

New secretary is . . .

Mr. G. A. (Gordon) McIntyre, BCom, AASA (Sen), has been appointed Secretary of the State Electricity Commission.

He succeeds Mr. F. P. (Frank) Chipperfield, who retired on June 3, after more than 45 years' service.

Mr. McIntyre, 53, was

previously the SEC's Internal Auditor — a post he has held for the past six years.

He joined the SEC in 1939 and, after war service in the CMF and RAAF, he has spent most of his career assisting in financial management.

Mr. McIntyre is married with three children.

Max Gray calls it a day after 38 years with SEC (cont. from p. 2)

land Institute of Advanced Council. For eight years, he also served as a member of the Latrobe Valley Water and Sewerage Board.

In retirement, Max and his wife Vi will live at Torquay, where they have made many friends, largely through a shared interest in golf — a sport in which both had many happy associations since joining Yal-

lourn Golf Club, 22 years ago.

They have been golf club members at Torquay for some years.

Keen on travelling, the Grays will be seeing a lot more of Australia in the next few years, although they will be turning their attention initially to the UK, Europe and Asia, where they plan to spend a six

month touring holiday.

At the Commission farewell function, after Assistant General Manager (Development) Jack Johnson had spoken in glowing terms of Max's SEC and community service, SEC Chairman Charles Trethowan presented the guest of honor with a color TV set.

At earlier farewells by Engineering Services Depart-

ment personnel, Max was presented with a beautifully crafted cocktail cabinet (made as a training exercise by apprentices) and a magnificent saw bench (also made by apprentices as part of their training).

He greatly appreciated a framed caricature study by Dot Prokop, a drafting assistant at Yallourn drawing office.

TAKE CARE IN COLD WEATHER

Cold weather in the Latrobe Valley not only brings down the temperatures . . . it also creates a driving hazard for motorists and cyclists, which makes it essential that while driving in fog conditions in the works areas — and outside the area — all drivers should take additional precautions against accidents.

Commission drivers, contractors and their employes, and any person entering the works areas under permit, are required by regulation to have full headlights on low beam while fog conditions exist.

Although the open cut areas and rail crossings present hazards of the most dangerous

types, the rule applies equally to all works locations. It should also be appreciated that speed restrictions are designed for normal conditions, and that speeds should be considerably reduced in fog.

Requirements of the regulations are NOT met by driving with parking lights only.

Failure to comply could result in disciplinary action being taken against Commission employes, whilst the authority for the vehicles of contractors and others to enter the works areas could be reviewed.

Commission employes should also put headlights on 15 minutes before light up time of an evening.



Two workmen make adjustments to one of the many jacks which supported the Hernes Oak pavilion before it was lowered on to foundations early this month.



The re-sited pavilion is pictured (right) being placed in position by contractors, Fowlers of Trafalgar. The newly constructed oval is pictured in the foreground.

NEW HERNES OAK OVAL READY FOR USE IN OCTOBER

The new Hernes Oak oval, constructed by the SEC to replace the old Hernes Oak oval near Fulton Avenue, will be ready for use before the opening of the 1977-78 cricket season in October this year.

Work on the new recreation reserve is almost complete — only a permanent access road from the Haunt-

ed Hills Road to the oval remains to be constructed. The oval is situated on the western side of the Hernes Oak Road, near the junction of the Haunted Hills Road.

Re-establishment of the oval and pavilion was necessary to enable expansion of Yallourn Open Cut. Hernes Oak Junior Football Club Under 11 and Under 13 teams, as well as the Hernes Oak Cricket Club (2 teams — B and C Grade) will actively use the new oval.

Mr. Gerry Morrissey, Hernes Oak Junior Football Club secretary and coach of the Under 13 football team and C Grade cricket team, says that the oval and pavilion will give added interest and enthusiasm to local sportsmen.

At present, the football club is using Yallourn No. 5 Oval, giving grasses on the new oval time to consolidate.

Re-establishment of the original Hernes Oak pavilion, relocated at the southern end of the oval early this month, should be completed within the next few weeks.

The large pavilion (25 x 13 metres) was transferred to the new site in one piece by Fowlers of Trafalgar. It's believed to be the largest building the firm has relocated in one piece.

Work began on the new oval in January, 1976; since then, more than 12,000 cubic metres of cut and fill has been used to establish the oval.

Other works have included the moving of more than 500 metres of water pipe and a section of the Hazelwood-Yallourn supervisory cable, and ancillary works including new oval boundary fence, and provision of a cricket pitch.

Safety award to drawing office

The Yallourn drafting section has reached 250,000 manhours without a lost time injury.

The section, consisting of 97 members, was rewarded for its excellent effort by presentation of the National Safety Council of Australia certificate and pennant.

Manager Engineering Ser-

vices Max Gray made the presentation at Yallourn on May 9.

The section's last lost time injury was in June, 1975.

To April this year, the section has amassed more than 342,183 manhours without lost time injury — and it's aiming for 500,000 manhours, which should be clocked up in February/March, 1978 (touch wood!!).

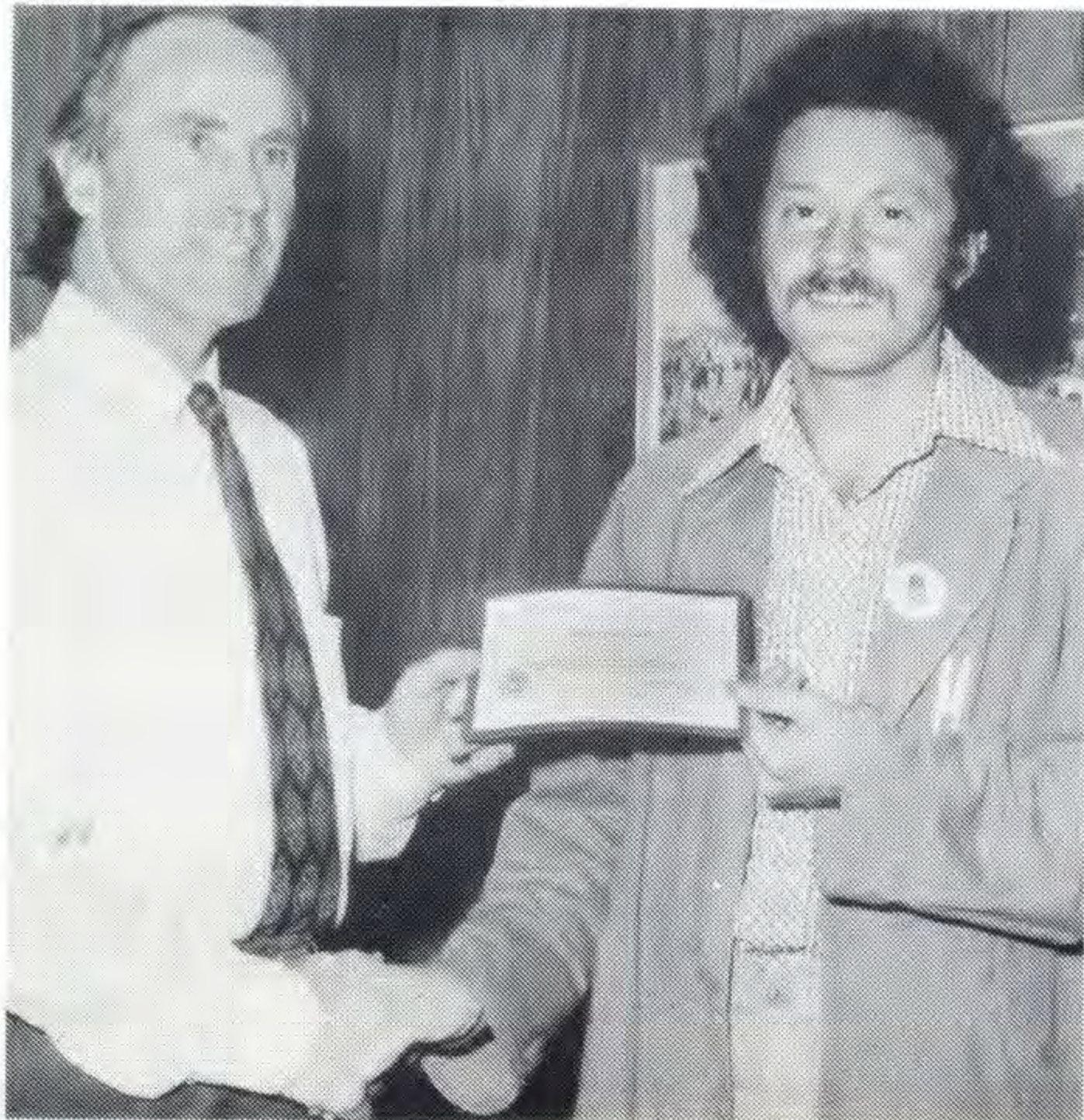
Max Gray praised the section for its fine achievement and excellent safety-conscious work record.

Section members (surveyors, draftsmen, photographers) are faced with potentially hazardous situations daily.

Max Gray presented the NSCA pennant and certificate to Peter Polson and Harry Bridge.



Showing off the Drawing office safety awards are (from left) Service Engineer (Mechanical) George Davis, Harry Bridge, Manager Engineering Services Max Gray and Peter Polson.



Mario receives 'wise owl' award

Morwell Briquetting and Power Installation Chemistry Laboratory scientific assistant Mario Dicorlento is a firm believer in wearing safety glasses at work . . . on January 20 this year, they saved him from serious eye damage.

Mario was preparing for an effluent monitoring survey by pressure cleaning filtering

apparatus with nitro acid when a nylon nipple snapped off the apparatus, squirting acid over his face.

He hastily washed himself under a safety shower in the laboratory where the incident occurred.

Because he was wearing safety glasses, there was no damage to his eyes — thus enabling Mario to become a member of the Wise Owl Club of Australia.

Left: Dudley Sharpe (left) presented Mario Dicorlento with his Wise Owl award certificate.

First safety award to boilermakers shift maintenance

Yallourn power station's boilermakers and shift maintenance group received its first safety award on June 1.

The 100,000 manhour award without a lost time injury was achieved over a period of 204 days.

The group consists of 90 men including day maintenance fitters, shift fitters and trades assistants.

Since the last lost time injury in July, 1976, the group has actually notched 148,797 manhours without a LTI . . . and they're still going strong.

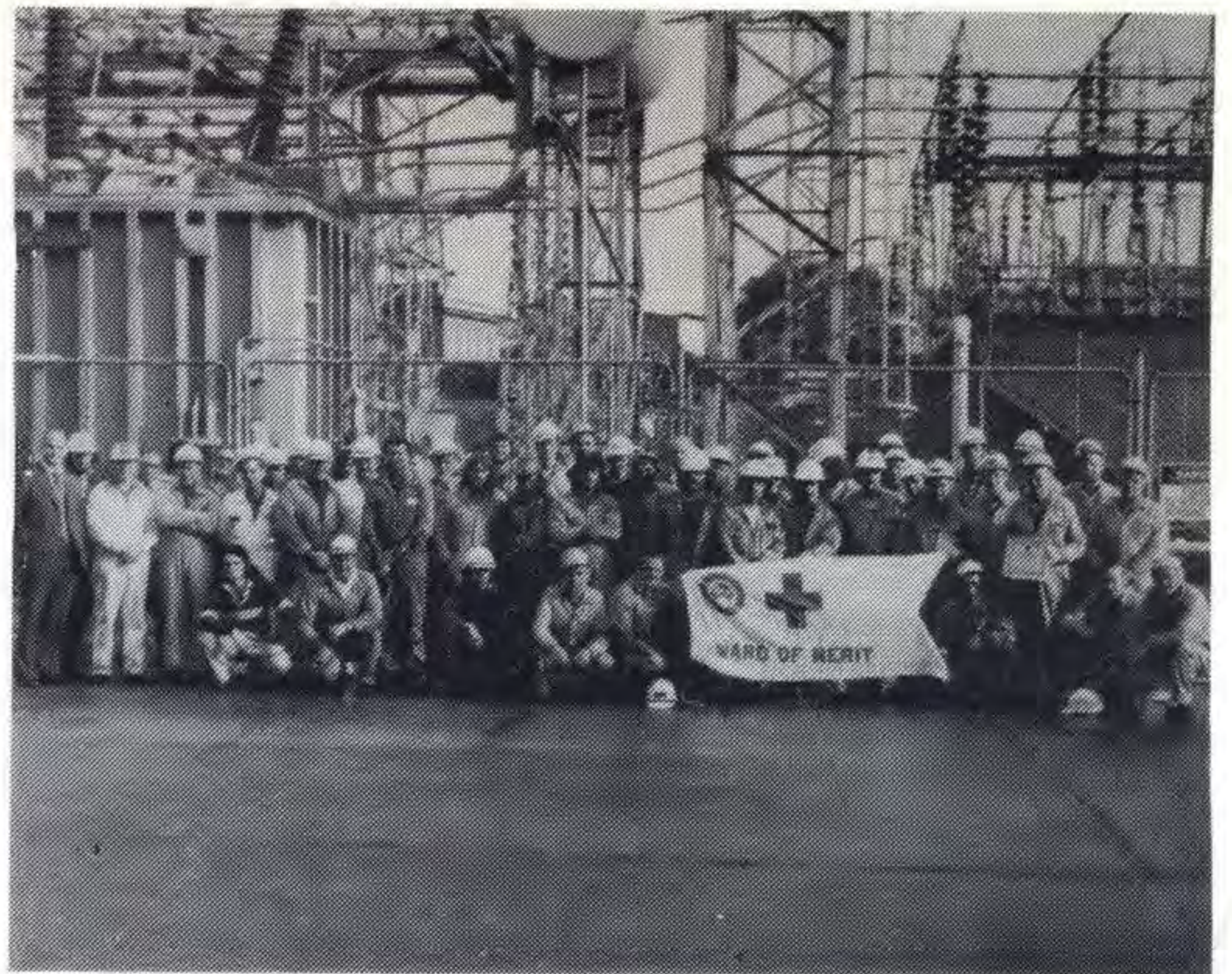
The National Safety Council of Australia pennant and certificate were presented by Acting Manager Power Generation Don Clark to Dick Sullivan and Tom McAlister. The 66 man Technical Service group also received a 100,000 manhour award on the same day.

The group, which includes tradesmen, apprentices, en-

gineers and chemists, reached their 100,000 manhours without a lost time injury in 337 days — and they have since pushed that total up to 157,797 manhours without a LTI.

It is the third safety award won by the group, which recorded its last LTI in March, 1976.

Don Clark presented the award to Alan Hawken.



Pictured (above) in front of the Yallourn power station switchyard is the large boilermakers and shift maintenance group with their safety pennant and certificate.

The Technical Services group (left) are pictured showing off their safety award and pennant after the official presentation of the awards.



Beware — batteries can explode given right conditions

DID you know that a motor vehicle battery can explode given the right conditions?

A case was brought to notice last month in which a motorised crane would not start because of a flat battery. Another crane was drawn up alongside and jumper leads were used to start the faulted crane. During the operation, one of the batteries exploded, spraying the operator with battery acid, pieces of lead and

battery case.

Fortunately, the operator was not injured because he was rapidly doused with water to prevent acid burn.

It's not known what caused this explosion but it raised matter for discussion.

When lead acid batteries are on charge (normal condition when the engine is running) the battery is exhaust-

ing hydrogen gas through the vents in the filter caps. The hydrogen gas mixes with oxygen and an explosive mixture can be generated, and given the right conditions and the application of a flame or a spark, an explosion can result.

So don't put a flame, spark or cigarette near your battery, the shock may be explosive.

RULES:

- Ensure battery is in well ventilated position.

- Don't put a naked flame or spark near a charging battery.

- Use good quality jumper leads.

- Connect jumper leads in the following order:

- (a) Connect lead one, negative to negative
- (b) Connect one end of positive lead to the charged battery (ensure the other end is clear of the vehicle frames)

- (c) Finally connect the remaining end of the positive lead to the flat battery.

If this method is followed, sparks will be avoided near the charged battery.

If excessive sparking occurs, recheck for correct connection.



Four of the new hopper type briquette trucks were pictured (above) last week at the Morwell briquette distribution railway siding.

New rail trucks will save more time

Four new hopper bottom briquette railway trucks have been put into service by Vic-Rail for the SEC.

The huge trucks, known as JBF wagons, the first of 30 to be built, will eventually make up a 24 hours turn-around unit train to Footscray.

The 44 tonne capacity trucks are a big improvement on the old standard type solid bottom wagons

and will considerably reduce unloading time.

The new trucks, which will be used exclusively for transporting briquettes from the Morwell depot, will travel express to and from Morwell.

The 30 trucks will have a train total capacity of more than 900 tonnes of briquettes.

SEC ANNUAL BALL

The ball this year will take the form of a

DINNER DANCE

on

AUGUST 12th, 1977

Smorgasbord meal

commencing at 7.30 p.m.

music by—'Direction'
dancing 7.30 p.m. to 2 a.m.

cost: \$20 per double

Contact: Tom Grimes, ext.
3381 for bookings

FOR SALE

One Nikko stereo with pre-amplifier (model TR 230). RMS 20-W into 80 HMS. Is capable of operating four speakers.

Also a 1 JVC and track stereo cartridge player recorder VD-1240. \$280 ONO. Can separate unit if desired.
CONTACT: Ext. 3295 or A.H. 34 1229.



New chief is no stranger

The new Assistant Chief Engineer Transmission Operations, Ian McDonald, is no stranger to the Latrobe Valley.

(Ian succeeded Ray Greenwood, who was appointed Manager Engineering Services last month).

Ian, who's been with the Commission for 28 years, has worked in the Latrobe Valley since 1952 after gaining earlier experience at Kiewa and in Melbourne.



IAN McDONALD

He began in the Latrobe Valley as an electrical engineer at Yallourn, and then worked his way up the ladder to Assistant Transmission Engineer in 1974, then to Transmission Engineer Operations, in 1976.

Outside the Commission, Ian's main interests are his family and golf.

He has been a member of the Yallourn Golf Club for 23 years — seven as secretary from 1968-75.

The McDonalds have two children, Allison and Scott.



Above: Checking the new units in the Latrobe Valley Control Centre is Regional Control Officer (Procedures) Gavan Edmondson

New video display units put into service — LVCC

To the layman, they look like television studio monitors, but the screens pictured (above) are in fact new Video Display Units in the Latrobe Valley Control Centre at Morwell.

The complicated units, which have undergone tests during the last two months, will eventually be located in the LVCC control room for use by regional controllers. The impressive looking units 'listen-in' to remote control and telemetering systems which provide information from the four Latrobe Valley stations — Hazelwood Terminal station and Hazel-

INTERESTED!

Fisherman and/or boat owners. The establishment of a local Game Fishing Club is envisaged, anyone interested, please contact R. Beilharz, ext. 3523.

wood, Yallourn and Morwell power stations.

They provide an up to date picture of the transmission situation — loadings on lines, conditions of machinery — and can detect damage to switchyard gear.

Information is relayed almost instantly to the controllers, where it is stored on disc or magnetic tapes. There are 80 information-storage blocks (each capable of storing about 32 pages of information) in each VDU, the equivalent of 2,560 pages to each unit.

Twelve months ago, regional controllers had 12 large books of procedures to search through for information . . . now they have it all at their finger tips, in an instant, to assist in decision-making.

The units went into operation earlier this month.

F.A. CUP — POPULAR AS EVER

This year's English FA Cup soccer final proved to be as popular with Australian audiences as the 1976 final.

The Melbourne viewing figure alone gives some indication of the event's popularity.

It was estimated that more than 400,000 people watched the exciting final between Liverpool and Manchester United on May 21.

SEC figures show that the normal evening consumption was up more than 200 megawatts, about the same as for last year's final between Manchester United and Southampton.

The SEC is able to estimate the number of people watching by checking the abnormal rise in electricity used at the time of the telecast.

FOR SALE

Sail No. 182

Sabre Wangman Kit, 18 month old, very good condition. Only sailed 12 times \$650.

Alec Wood, 13 Lafayette Street, Traralgon 3844 — Phone Ext. 3244 or (051) 74 2117.

Service Register

COMMISSION staff and wages employes who reached significant service milestones during June are included in this month's register.

25 YEARS:

Jack Bridgeman	Hazelwood Power Station
Ian McDonald	Civil Services
Clem Hill	Central Workshops, Yallourn
Allan Miligan	Yallourn Power Station
Charles Wilson	Yallourn Power Station
George Cassar	Coal Production, Morwell
John Forsythe	Coal Production, Yallourn
Alf Thorpe	Yallourn Power Station

30 YEARS:

Aubrey Davey	Coal Production, Yallourn
Les Treloar	Central Workshops, Yallourn
Lyle Seear	Yallourn Power Station
Frank Cook	Transport Workshops, Yallourn
Frank Rennie	Coal Production, Morwell

31 YEARS:

Richard Cannot	Coal Production, Yallourn
Allan Young	Transmission, Yallourn
Bill Stevens	Coal Production, Yallourn
Wally Entwistle	Transport Workshops, Yallourn
Ron Mansfield	Coal Production, Yallourn
Bill McInnes	Hazelwood Power Station
Ted Crookes	Coal Production Headquarters
Leslie Thomson	Transmission
Claude Whitbourne	Area Administration

33 YEARS:

Syd Veal	Central Workshops, Yallourn
----------	-----------------------------

36 YEARS:

Albert Chinnock	Central Workshops, Morwell
Ernie Mitchell	Coal Production, Yallourn
Frank Miles	Engineering Services Headquarters

37 YEARS:

Alf Cook	Civil Services, Yallourn
----------	--------------------------

38 YEARS:

Brian Dooley	Finance
--------------	---------

41 YEARS:

Frank Johnson	Central Workshops, Yallourn
---------------	-----------------------------

48 YEARS:

Tim Fogarty	Yallourn Power Station
-------------	------------------------



Pictured before heading off on an exercise at Moe early this month are SEC members of the Traralgon-Morwell and Moe units. They are (from left) Back row: Glen Gunther, Ted Allchin, Col Leviston, Morey Mynard, Barry Davies, Jim Lay, Bill Lay, —, Brian Corkran, Bill Pride and Bob McPherson.

State emergency service units

The organisation known as State Emergency Services provides important back-up support to Victorian essential services such as fire brigade, ambulance and police search and rescue.

Five units are now actively based in Gippsland, with a number of SEC employes heavily involved with units at Moe, Traralgon-Morwell.

The latest unit to be formed was the Traralgon-Morwell unit (March, 1977), which is headed by Deputy Controller Col Leviston (Transportation, Morwell). Others in the unit are Kevin

Veysey and Glen Gunther (Morwell Workshops)—and there are 15 Commission employes in the Moe unit.

Moe Controller is Bill Lay (Coal Production, Yallourn), and Deputy Controller is Brian Cockran (Transmission, Yallourn).

Most of the units' work at present is associated with assistance at road accidents — when requested by police.

At present the unit is on a membership drive — anybody interested in joining should contact Col Leviston on ext. 3118.

AUSTRALIAN INSTITUTE OF ENGINEERING ASSOCIATES

A.I.E.A.

Members and *Prospective Members
*Persons Studying for or Holders of
Engineering Certificates

or

(a) Certificates of Technology

or

(b) Higher Technicians Certificate

are invited to

A TOUR OF YALLOURN 'W' POWER STATION

TUESDAY, 2nd AUGUST, 1977

1700 Hours to 1900 Hours

MEET in 'W' STATION ADMINISTRATION BUILDING

LECTURE ROOM

The President and Secretary of the Victorian Division of A.I.E.A. will address the tour members

It is planned to follow the tour with a dinner

at the YALLOURN HOTEL

(cost per person \$6)

Persons interested, please contact H. Fletcher
'W' Station, Phone Ext. 2878

retirements



'DICK' SWAINSON

Now that Dick Swainson has retired from the Commission, after 20 years service, he and his wife Joan plan to enjoy a six month holiday which will take them to England, Scotland, Wales and Europe. Their holiday itinerary includes taking part in the Queen's Silver Jubilee celebrations; attending some of the cricket tests between Australia and England . . . and do some wine tasting on the side. On their return the Swainsons will continue to live in Morwell and enjoy retirement here in the Valley, although Dick says he and Joan will migrate to Queensland's warmer climate during the Victorian winter.

Dick began with the Commission as an electrical fitter with Construction, Yallourn in February, 1952. In the years to follow he worked as an electrical fitter at Footscray, Yallourn, Morwell and Hazelwood.

He retired on May 12, as a supervisor at Yallourn 'W' Construction.

At an informal farewell function in Yallourn 'W' canteen, Yallourn 'W' site engineer Keith Kesper presented Dick with two suitcases, a briefcase and a travelling bag.



LUDWIG BRAUN

A quiet and peaceful retirement taking each day as it comes — that's how Ludwig Braun intends to live in retirement. He called it a day after 15 years with the Commission earlier this year and will continue to live in Morwell, where he intends

to enjoy life.

Ludwig began with the Commission in November, 1962 as a pick and shovelman at General Services, Morwell.

He then progressed through the positions of cleaner, assistant press driver, loader, coal conveyor attendant and electrical plant attendant at the Morwell Briquette factory. In November, 1973 he was promoted to operator, the position from which he retired.

At an informal farewell, Morwell Briquetting and Power Installation Superintendent Cyril Morellato presented Ludwig with a kitchen clock on behalf of workmates.



LEN DARRAGH

Len Darragh, of Traralgon, has planned a quiet retirement and intends to take each day as it comes.

Among his early plans was a touring holiday around Victoria with his wife, Joyce.

Len, who retired from the Commission on April 29 after 31½ years service, began with the Commission in October, 1939, as a carter at the Yallourn nursery. Five years later he transferred to the position of chainman with survey at Yallourn, and then to laborer at Coal Production, Yallourn. June, 1959, saw another change for Len, this time to trimmer at Yallourn briquette factory and he then became station plant attendant. In March, 1960, Len transferred to Morwell briquette factory as a station plant attendant, and was promoted to operator in November, 1973. In retirement Len intends to enjoy his hobbies of fishing and generally being a handyman.

At an informal farewell function in the Morwell Briquetting and Power Installation canteen, MBPI Superintendent Cyril Morellato presented Len with a wallet and notes from his workmates.



JIMMY LEES

A bright and cheerful Jimmy Lees retired from the Commission on April 28, after 18 years service. Jimmy, who retired early for health reasons intends to enjoy retirement with his wife Emily at their Moe home—with holiday breaks at Phillip Island and travels north to Queensland for the warmer climate during the Victorian winter. Jimmy says

his hobbies of trout fishing and gardening will take up much of his time in retirement. At a farewell function in the Yallourn Tests and Communications Section offices canteen, Transmission Engineer, Services, Bill Smith presented Jimmy with an envelope and notes from his mates.

Jimmy began with the Commission in July, 1959 as a trades assistant with the Yallourn briquette factory; became a cleaner in 1960, then went on to become electrical plant attendant, dry coal conveyor attendant and lamp patrolman. He retired as a cleaner at the Tests and Communications Section offices in Yallourn.

valley visitors

Soccer superstar visits the valley

English soccer superstar Malcolm 'Supermac' McDonald was a great drawcard when he conducted a soccer clinic in Morwell on June 13.

The clinic was attended by more than 200 junior and senior Latrobe Valley soccer players and officials, many of whom were SEC employes or sons of SEC personnel.

The clinic, arranged by Latrobe Valley Soccer League president

Ted Gilchrist (Hazelwood power station) and secretary Dick Bosma (HPS), was held at Ronald Reserve, home ground of the Pegasus Soccer Club.

Pegasus president is Les Wright (Coal Production, Morwell), and secretary Fred McLeod (Education and Training, Yallourn) said the clinic was a highly successful way of promoting the sport and imparting valuable knowledge.



Above: Talking soccer are (from left), Secretary of the Latrobe Valley Soccer League, Dick Bosma, Malcolm McDonald and LVSL president Ted Gilchrist.

Thailand visitor was impressed

Among the hundreds of visitors to the SEC's Latrobe Valley works areas during the past month was Mr. 'Sammy' Natasilpa, Deputy general manager — Thermal plant from the Electricity Generation Authority of Thailand.

Mr. Natasilpa held discussions with SEC power station superintendents during his two day visit.

Another visitor from Thailand was Mr. Baranasuri the Director of Supply and

Procurement for the Electricity Authority of Thailand.

Other visitors came from inter-state and overseas including a five man party, led by the SEC's AGM (Administration) Peter Moir, from the Commonwealth Trading Bank took in a one day visit to the area.

Another interesting visitor during the month was 92 year old John Houben of Holland. John's son Peter works in the Yallourn Drawing office.



Pictured above with Malcolm 'Supermac' McDonald are SEC employes and their children.



Pictured near by an SEC dredger are (from left) Mark Jackson of New Zealand, John Houben, Holland, Corry Houben of Yallourn and Sue Sutherland, New Zealand. Both Mark and Sue are Rotary exchange students.



Pictured in front of a 350 megawatt turbine at Yallourn 'W' is the AGM (Admin.) Mr. Peter Moir (second from right) and the group of bankers from Sydney.